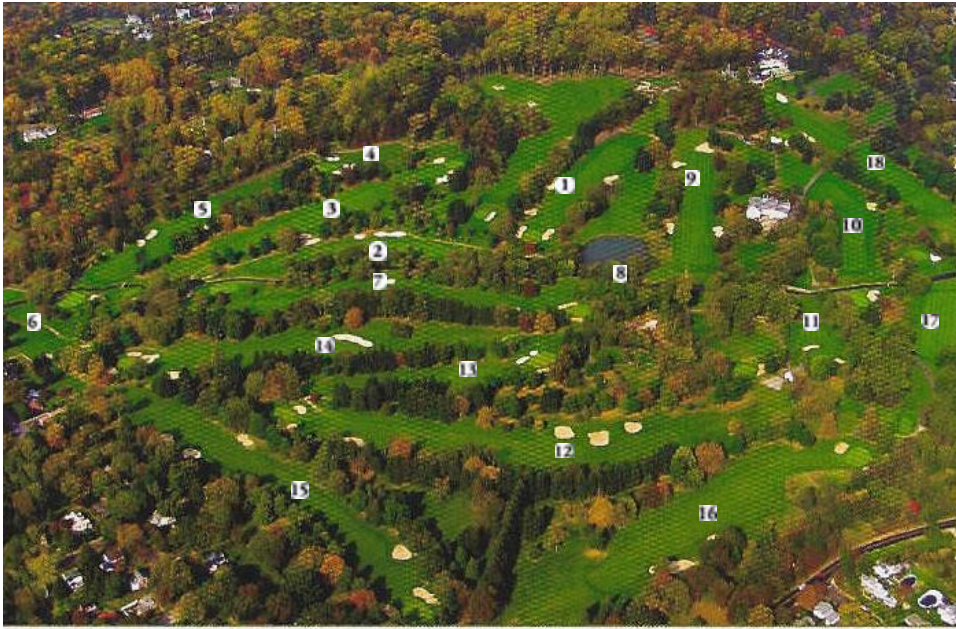




Manufacturers' is classic parkland golf. It is beautiful— majestic hardwoods and flowering fruit trees mark the way. It is easy to walk (and the tiny tram that carries us from the last green up the steep hill to the clubhouse earns everyone's gratitude, not least of all the caddies!). It is straightforward and natural and honest—caprice is almost never a factor, except perhaps on that 9th green. So admirably varied is the design that there is no suggestion of repetition. And, above, all the course is crammed with top-notch golf holes, holes that consistently demand sound thinking and sound swinging. It is **William Flynn** at the top of his form and, like all the Flynn courses that Philadelphia golfers are heir to, it is a delight to play.

Is there, on the entire roster of Golf Association courses, an opening shot more truly exhilarating? Understand, it is not a free swing—no, there are bunkers right and left in the landing area, and husky evergreens just outside the sand. Still, the fairway is not really pinched, and this launching pad of a tee, so eloquent in its promise of a long, soaring shot, encourages us to swing the club fully back and fully through. If we should do exactly that, and do it smoothly, then how well—how satisfyingly—has the game begun! And though the scorecard reads 376 yards (390 from the back tees, 360 from the forward markers, as Flynn was the first to dub them), we know that the playing value is rather less. We will now approach a green open across the front with something like an 8-iron, and the likelihood of jotting down a 4 as we head toward the 2nd tee is very high indeed.

In 1937 the club was reorganized, the name was changed to Manufacturers' Golf and Country Club, and the roster would soon disclose the names of business and professional men from all callings.





The Avocet



"1993 Best New Course in Myrtle Beach" *The Sun News*
 "1995 America's Best Golf Courses, Ranked #6 in South Carolina" *Golf Week*
 "2002-2003 Places to Play: 4 Star Award Winner" *Golf Digest*

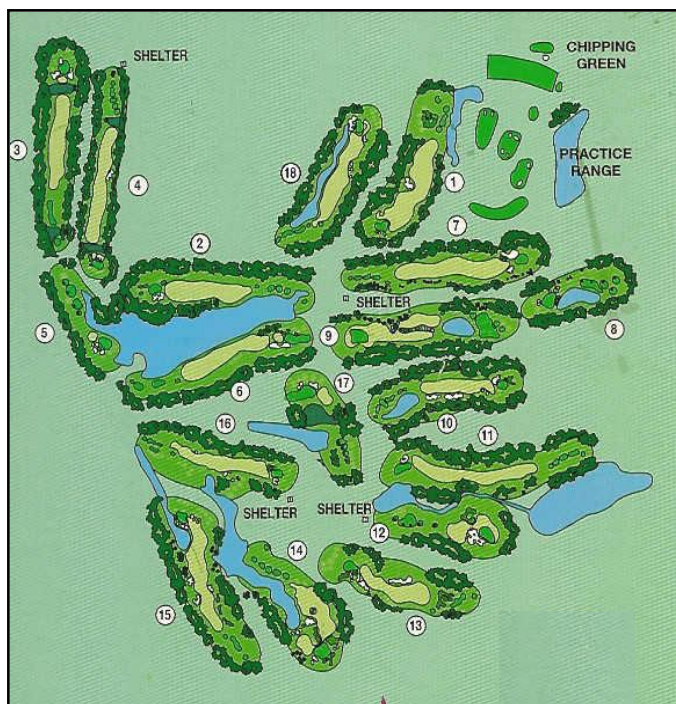


No. 5 at the Avocet Course

Wild Wing Plantation encompasses 1,050 acres of natural beauty and splendor rarely found. A feeling of serenity exists where nature is seemingly undisturbed by the masterfully sculpted fairways which gently blend with the trees, waterways, and wildlife. This reserve is dedicated to the game of golf, enabling each course to have its own distinct personality.

In the fall of 1993, Wild Wing introduced the Avocet. Designed as a signature course by **Larry Nelson**, two-time PGA Champion and 1983 US Open Winner, and **Jeff Brauer**, the Avocet is a course where each hole is memorable for its enjoyment, aesthetics, and playability. All 18 holes are challenging, but fair tests of the player's skills.

Creative contouring presents elevated tees and greens, double fairways, grass bunkers, and even a double green serving two holes. Water plays a strategic role in the design of the Avocet and with all Par 5's and Par 3's orienting to different points on the compass, each season's prevailing winds come into play. Multiple tees on each hole offer endless and ever changing challenges.





There are numerous reasons why some courses never get their fair share of recognition. It can be because they are so out of the way or because they live in the shadow of great courses. Other courses just aren't in an area that gets treated seriously as providing top notch course design. The best example is Myrtle Beach.

A course that suffers from just that fate is the Heathland, west of Myrtle Beach. It is part of the Legends Golf Complex that features three different courses. Heathland is a course that owes its quality to the work of the architect rather than being a site that was blessed with tremendous natural beauty—it was flat and had no natural features to speak of and was entirely shaped by man. It is a showcase for what an architect can achieve when he is presented with an undistinguished canvas.



Opened in 1990, the course was the second course built by **Tom Doak**. First thing Tom did was to strip the 175 acres and shape it wall to wall. From there, he laid the holes over the gently undulating terrain. He also created two burns for drainage, which are used to great effect on the 13th and 16th holes.

True to its name, the course enjoys a real expansiveness. Only on the 5th hole do trees have any say in the strategy of how to play a hole. Otherwise, the course is handsomely dotted with 7 foot or less low lying scrub. The wind - the course is only eight miles from the Atlantic Ocean - blows across the landscape freely. The width of the course encourages the better golfer to play aggressively while enabling the hapless Myrtle Beach golfer to still have fun.

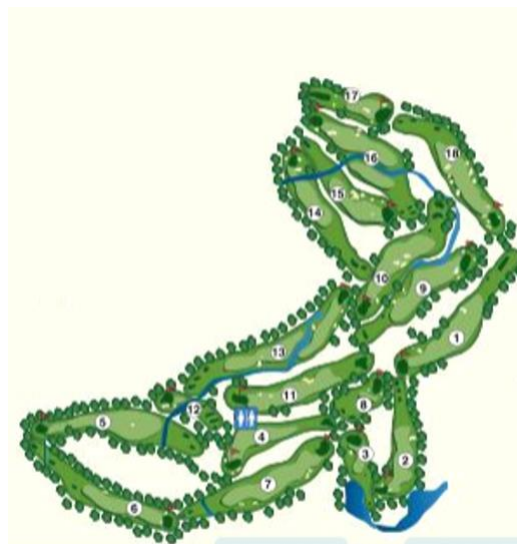


At the end of the day, like all Doak courses, your score depends on how well you handle what are always original green complexes. Plenty of fairways and greens may well be hit on this course but a 40 putt round never helps a golfer's cause.

When shaping land, man will never capture the subtleties that nature freely provides. Apart from anything else, it would take too long and blow any budget (ignore Shadow Creek). However, the result at Heathland is remarkably successful and represents some of the best shaping in the US. Hole after hole falls naturally over the land and the overall consistency is matched by few courses. Given how little he started with, the course highlights the skill that a golf course architect can bring to a project.



Rated one of the "Top 10 New Resort Courses in the World" by Golf Digest Magazine in 1990, Heathland's design allows players of all ability levels to "Step Back in Time".





This **Jack Nicklaus** designed Par 72 Championship Golf Course presents a unique challenge to golfers of any skill level. Water comes into play on every hole.

Giant sand and waste bunkers guard many holes, and numerous grass depressions and mounds line the sculptured fairways. Huge tiered greens challenge putting strokes.

Norman. Faldo. Love. Couples. They've all taken a swing at English Turn's 7,078 - yard track and come away with a bit more respect for the award-winning Jack Nicklaus designed 18-hole layout.

As home of the New Orleans PGA Tour Stop and to its 450 lucky members, English Turn is serious about its golf. The highly manicured greens, meandering lakes, and magnificent Plantation Style Clubhouse make golfing at English Turn a matchless experience.

Jack Nicklaus created eighteen unique, championship holes surrounded by an expansive waterway. At English Turn each hole is different. There was no architectural cookie cutter here, and no holes designed merely to divide residential areas. Each English Turn hole challenges you with its own personality. The greens are notoriously undulating, challenging yet fair for the club member and pros alike. The famed 18th of English Turn has consistently been rated one of the most challenging on the PGA Tour.

Exceptional course design specifically created to address the unique drainage issues that have become associated with golf in New Orleans is backed up by meticulous care and an incredibly knowledgeable and attentive staff. A round of golf at English Turn is truly an Extraordinary Experience.



Course Architect: Jack Nicklaus

English Turn News

Hurricane Katrina Update

- The English Turn Community weathered Hurricane Katrina fairly well as reported to us by the St. Paul Corporate Assessment Team and other eyewitness accounts
- Electricity is now restored to English Turn
- English Turn has experienced no flooding to our knowledge
- Due to the mandatory evacuation, Vinson Guard evacuated New Orleans; the 7th District N.O.P.D. and National Guard took occupancy of the Clubhouse and has patrolled the Community from the time the hurricane struck up to the present time and has provided additional security to the Community
- To the best of our knowledge, there has been no visible damage from the street from looting activities within the English Turn Community

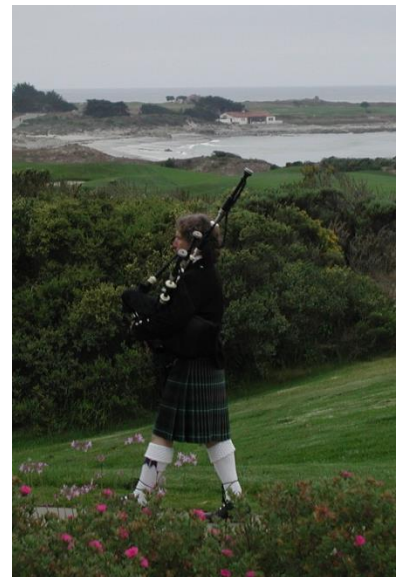
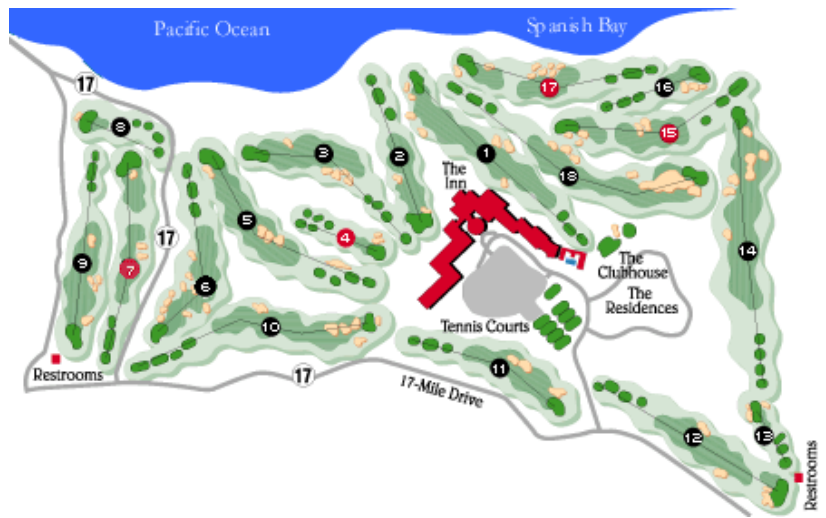
The Links at Spanish Bay

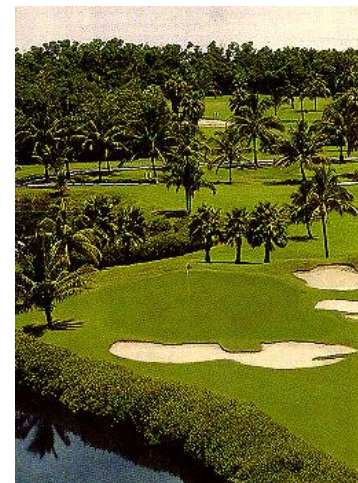
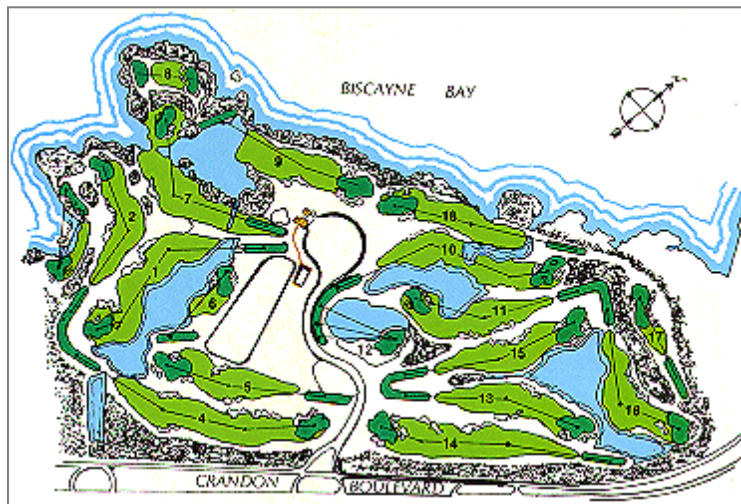


"Spanish Bay is so much like Scotland, you can almost hear the bagpipes."
Tom Watson

Designed by **Robert Trent Jones, Jr., Tom Watson and Frank "Sandy" Tatum**, The Links at Spanish Bay is America's foremost Scottish-style linksland course; even the rugged Monterey coastline mirrors the natural beauty of Scotland.

From the rolling fairways, white sand dunes and gusting winds to the plaintive strains of the bagpipe that signals the end of each day's play, The Links at Spanish Bay is an elegant, challenging journey into golf's beginnings.





Crandon Park Golf Course is a championship 18-hole golf course located on the "island paradise" of Key Biscayne, just 10 minutes from downtown Miami. It is the only public course on the Bay. Designed in 1972 by **Robert von Hagge** and **Bruce Devlin**, and redesigned by von Hagge in 1993, the course features the world's largest tee, seven saltwater lakes, challenging sand traps, mangrove thickets, and many holes overlooking Biscayne Bay.



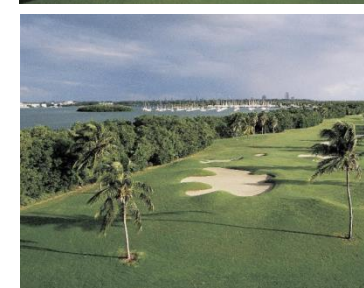
Since 1987, it has hosted the Senior PGA Tour, attracting players including Lee Trevino, Chi Chi Rodriguez, Don Messengale, Ray Floyd and Gary Player. The course is considered one of the most beautiful and difficult par-72 courses in the state and has been rated in the top ten courses by Golfweek, and one of America's top 75 upscale courses by Golf Digest. It also has a fully stocked pro shop, cart and equipment rentals, pro lessons, a lighted driving range, and practice chipping and putting greens.

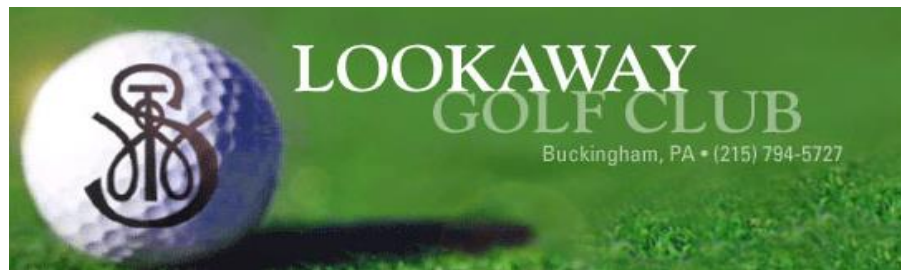


In 1993, Crandon Park Golf Course underwent a \$1.5 million renovation. Seventeen of eighteen greens were rebuilt to PGA specifications, which had changed since the course opened. Some bunkers were expanded and some greens were made smaller, and mounds were added around many of them. A new irrigation system was installed, and cart paths were built along several holes that had none. Hills were added around the greens for better depth perception and to provide viewing areas for the Annual Senior PGA Tournament.



From the first hole - a dog leg par 5 that requires a drive over water and mangroves - to the last - another par 5 with water on both sides of the fairway - Crandon Park Golf Course has, in many ways, become Miami-Dade's signature public golf course.





Although Lookaway Golf Club is relatively new, there is quite an air of history at the club. The property itself dates back to 1713, when it was deeded by William Penn (Deed #1 in Buckingham Township, Pa.) to Thomas Watson, of Yorkshire, England. The building that serves as the Lookaway clubhouse was built sometime around 1752 and is believed to be the oldest building used as a clubhouse in the United States.

Converted from an 18th Century Manor House, built by Thomas Watson for his son John, the Lookaway Clubhouse has

retained much of its original charm. Cozy rooms with fireplaces, colonial decor and fieldstone facade allow this attractive building to blend nicely into the historic Bucks County countryside.

Naturally, the Lookaway experience really gets started on the golf course. After just one round on the **Rees Jones** course, golfers know why it was voted one of the top 25 courses in Pennsylvania in *Golf Digest's* spring 2001 issue. The course is fair, yet challenging. It dares the better golfers, while offering options to the less-skilled players.

Rolling hills, wetlands and hundred-year-old trees characterize the course, which is nestled in the rolling hills of Bucks County, Pennsylvania. These natural features are enhanced by carefully placed bunkers and aesthetically pleasing rough areas which combine to complete a course that is visually pleasing as well as satisfying to play.



12th Green



18th Green





On the west coast of Florida, simply known as the gulf coast to Floridians, there is a TPC facility that is building its own tradition. The Tournament Players Club of Tampa Bay, located 30 minutes north of downtown Tampa in Lutz, Florida, hosts the Verizon Classic, formerly known as the GTE Classic. It has been a stop on the Senior PGA Tour for the past 12 years. Since 1992, this tournament has been hosted by the TPC of Tampa Bay and is now considered one of the most challenging venues on the Senior PGA tour.

As you enter the clubhouse at the TPC of Tampa Bay, pictures of these legends magnify the ambiance of this world class facility. In the foyer, life sized pictures of Jack, Arnie, Raymond, Lee and Chi Chi welcome you. Additional pictures of the gallery behind the 18th green, a map of America marked with all of the TPC facilities nationwide, and the elegance of the clubhouse interior sets the scene for an awesome golfing experience.

Ray Floyd has called the TPC of Tampa Bay one of the best courses on the Senior PGA Tour. Golf Digest has given the TPC of Tampa Bay a 4 star on their places to play list. Golf & Travel Magazine in a January 2001 article ranked the TPC #1 in Tampa, Florida. Meanwhile, the TPC of Tampa Bay has also received the Best Choice of Tampa award by Reader's Choice.

Two major themes of the TPC of Tampa Bay are spectacular views and collection areas. The views at this Tournament Players Club designed by **Bobby Weed** are enhanced by elevated tees, exotic fairway bunkers, gentle rolling hills, scenic wetlands and deep greenside bunkers that are often tilted at an angle to highlight their physical features. The best example of these visual effects occur on the 332 yard, par 4 5th hole.

An elevated tee stands above a pond which runs down the left side of the fairway. Beyond this pond and behind the green is a wetland covered in native grasses and brush. Trees down the right hand side are extenuated by a slightly raised fairway bunker which is your target off the tee. Just behind the 150 yard marker, this fairway bends to the left, slightly uphill to a green that is sandwiched between two deep bunkers with steep lips. Three seems easy after your drive, but this green is devilishly slick.

Because of how aesthetically pleasing this course is to play, it's nearly impossible to single out a few holes as quote signature golf holes. While some holes have homes located to the left or right of them that distract from its overall make up, other holes are secluded by Florida pines, cyprus and wetlands.

The last five holes at the TPC of Tampa Bay could be signature holes for any course in Florida. Just ask those Senior PGA Tour players who wilted down the stretch at the 2001 Verizon Classic. The 14th hole is 588 yards, 15 is 452 yards, 16 is 430 yards, 17 is 217 yards and the 18th is 456 yards, uphill!

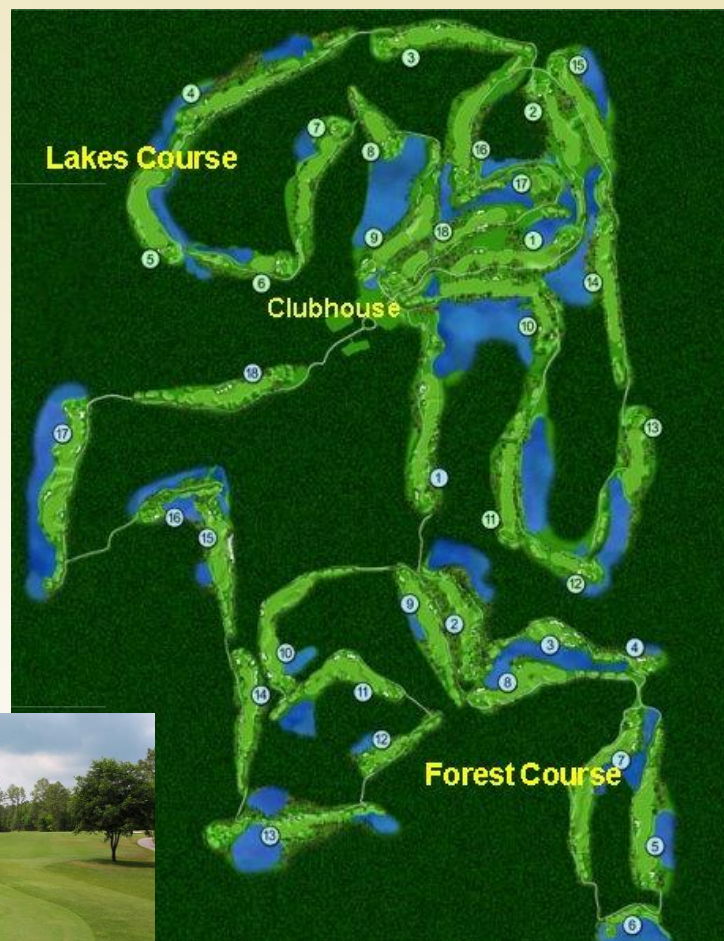




Featuring two 18-hole championship golf courses with entirely different personalities, **The Eagles Golf** courses are among the favorite courses to play in Tampa Bay. On the **Lakes**, water comes into play on virtually every hole. This 18-hole course measures over 7,100 yards and is more like the traditional Florida course with huge greens and generous driving areas. Both nines of the **Lakes** start out with unique par-5's that challenge golfers to use their creativity to make a sub-par score.

Noted golf course architect, PGA Tour professional and NBC-TV commentator **Gary Koch** and master architect **Rick Robbins** are responsible for the front nine of the **Forest** Course, while noted architect **Ron Garl** designed the back nine. Accuracy is a premium on this course, with its highly contoured fairways and well placed, meticulous greens. This course measures 6,700 yards and features the signature island-green, par-3 sixth hole, which rivals the famous 17th hole at the TPC at Sawgrass in Jacksonville. The **Forest** is also famous for its 13th hole, dubbed "Lake Michigan" because of the large lake guarding the green. A par here is equal to a birdie on most other holes.

As you play these outstanding layouts, you soon understand why **The Eagles** has a hard-won reputation for well-conditioned tees, greens and fairways.





Renowned architect **Dan Maples** has designed some of America's most exciting and talked about golf courses, now, creates his first new course in Myrtle Beach in seven years.

This long-awaited course is brimming with a variety of experiences, including a pair of back-to-back island greens, and the awesome island ninth, surrounded by water from tee to green.

Grab your bag and give this new track a shot. Man O' War appears to be on its way to being one of the classic courses on the Strand and may well be one of the toughest courses you'll ever play.

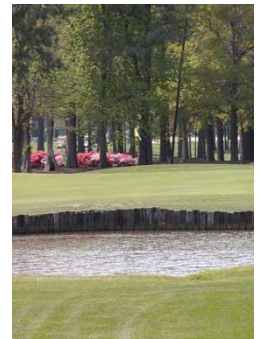


Bay Tree Golf Plantation is beginning its 30th season of hosting golfers from all over the world. Throughout its history this 54-hole complex has devoted itself to providing the finest golfing experience available in the Carolinas.



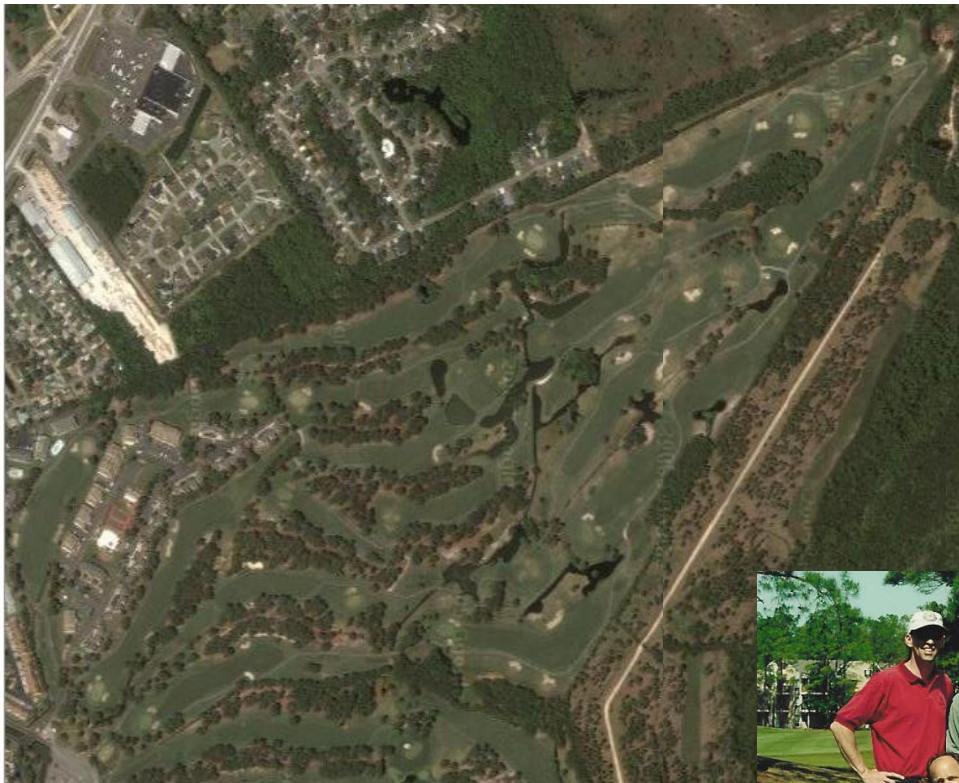
Designed by one of *Golf Digest's* top ten ranked American golf course architects, **George Fazio**, Bay Tree has set the standard for other courses on the Grand Strand to follow. All three of Bay Tree's courses were carved from scenic low-country forests.

George Fazio was extremely pleased with the green and bunker complexes he created. The overall quality of the courses was quickly recognized, and by 1975 the PGA had selected Bay Tree as the site of that year's final stage of tour qualifying. The PGA liked these challenging, but fair, courses so well that they returned in 1976. Craig Stadler, Bruce Lietzke, Calvin Peete and Bob Shearer are just a few of the professional stars who got their start on the PGA Tour at Bay Tree.



The GOLD COURSE at Bay Tree gained national attention as host of the LPGA Championship with NBC broadcasting the play of the world's top lady professionals. Consistently ranked among the top courses in the Carolinas, the naturally rolling terrain of the GOLD would suggest that nature always intended it to be a top caliber golf course.

The clubhouse with its panoramic 270 degree view of the golf courses contains one of the finest collections of golfing memorabilia in the Southeast.



11/05 UPDATE: Bay Tree Golf Plantation, one of the oldest (1972) courses in Myrtle Beach, S.C., will close May 15 to make way for a housing development. Known for its distinctive golf ball water tower, Bay Tree was designed by Philadelphia architect George Fazio and built with his then-young and now famous nephews, Tom and Jim Fazio.





When the South Course of Oakland Hills was formally opened on July 13, 1918, it already enjoyed a certain degree of prestige. After all, the course was designed by the foremost golf course architect of his day - **Donald Ross** and the Club had engaged, as its first professional - Walter Hagen who had already won the United States Open. The enjoyment of country club life in those days was pretty well restricted to the golf course. The "Clubhouse" was the Miller farmhouse on the North side of Maple Road and the old chicken coop served as Walter Hagen's pro shop. Oakland Hills' South Course is now world-renowned and is consistently picked among the top ten tests of golf in the United States and, indeed, the world. Its reputation is well earned.



The first major tournament hosted was the Western Open in 1922 which was won by our host pro Mike Brady, who had succeeded Walter Hagen, by ten strokes over runner-up Jock Hutchinson. Two years later, in 1924, the club played host to the first of five United States Open Championships. This was won by Cyril Walker with a 297 total. Runner-up that year was Bobby Jones, the defending champion, at 300.

Although many tournaments have been held throughout the years at Oakland Hills, the one which gave the course its greatest reputation as "The Monster" was the 1951 Open. The result was a tournament in which only two subpar rounds were shot during the entire 72 hole affair. Ben Hogan won with a total of 287 by shooting a final round 67 after which he was quoted as saying "I am glad I brought this course, this monster, to its knees." He also said that it was "the greatest test of golf I have ever played and the toughest course." The late Clayton Heafner who had a final round of 69, the only other sub-par of the tournament, finished second two strokes back. There was some comment after the last round of the tournament of the effect that the tee markers had been moved so far forward that last day as to take some of the fairway traps out of play. In any event, the natural result of this extremely difficult Open was that from that point on the USGA no longer permitted the host Clubs to control the layout for an Open tournament.

In 1985, Oakland Hills became one of only three courses in the country to have hosted the U.S. Open five times. With many of the big names missing the cut, a relative



unknown from Taiwan, T.C. Chen, found himself leading the field into the final round with the help of a rare double eagle on the second hole during the first round of play. While millions watched on television, T.C. blew a four stroke lead with a quadruple bogey on the fifth hole primarily by hitting his ball twice on one approach shot. Despite a valiant effort on his part in a head to head duel with Andy North, the eventual winner, he was never able to recover from his disastrous experience on the fifth hole.





WHITEMARSH VALLEY COUNTRY CLUB



Summertime, seated on the patio at sundown, one is quickly taken in by the broad expanse of landscape; the majestic carpeting of fairway's flanked by stately trees with emerald green's guarded by vivid white sand traps. In our state of serenity the beauty leads us to believe Nature was a golfer, for no one could model this part of Whitemarsh Valley.

The original clubhouse, whose stone was dated 1769, had a strong link with history; it served as headquarters of General "Mad Anthony" Wayne during the Revolutionary War and the Battle of Germantown. General Marquis de Lafayette also stayed here. Progress forced the replacement of the original clubhouse, rebuilt 200 years later in 1969. A major renovation then took place in the year 2000 to change the facade and better compliment our beautiful surroundings.

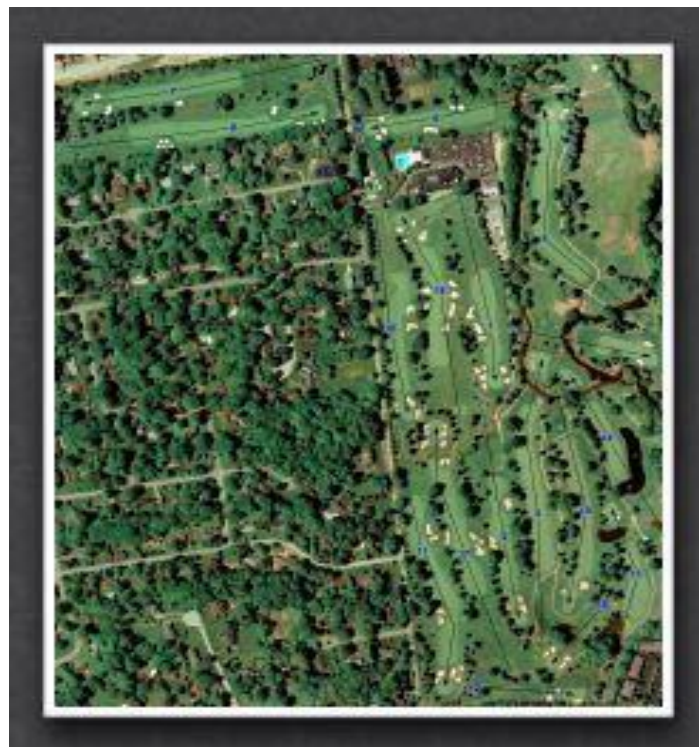


The Club had its share of major tournaments, starting in 1918 when Whitemarsh held its first major national tournament, the All-American Open, won by Jock Hutchinson. The tournament was a substitute for the National Open, which had been suspended due to World War I. In subsequent years Whitemarsh held the Women's National Amateur Championship in 1933, won by Virginia Van Wie; a men's pro tournament called the True Temper in 1934; and the Women's National in 1936 featuring the famed Babe Didrickson.



From 1963 to 1980 a new tournament on the pro tour called the Whitemarsh Open, later the Philadelphia Classic and finally the IVB Golf Classic, started with Arnold Palmer being the first winner. Jack Nicklaus won in '64, '65 and '78. Nicklaus won his first largest winnings, with \$24,000. Tom Kite won his first major here in 1976, also along with Gary Player they each shot a course record 63 during the pro-Am session. The champions cup for this event with a list of winners is on display in our Grille Room.

Whitemarsh has a history rich in heritage. The course was designed by **George C. Thomas, Jr.** with **William Flynn** and **Donald Ross** each redesigning the course several years back. With a membership that is sensitive to family oriented activities all here--welcome to Whitemarsh Valley Country Club!



Rolling Green Golf Club



A Classic, Layout -

Rolling Green Golf Course is a classic layout designed by renowned course architect **William S. Flynn** in 1926, and of course the name of the property is no coincidence. Rolling Green's natural beauty lies in the rolling fairways that lead you through the towering, tree-lined grounds. The greens are usually hard and fast, which results in a great test of golf when considering that every hole is played uphill, except for one.



In the Best in State rankings for 2003-2004 our course has been ranked 9th in the state by Golf Digest. Previously "Golf Digest" rated Rolling Green as the 9th "Best in State" course for 1997-98, and the 13th best for 1995-96. In addition, "GOLFWEEK" selected Rolling Green as 85th best out of "America's 100 Best Classical Courses" for 1997, 82nd in 1998 and 93rd in 1999.

The Club has recently completed major improvements to the course, including a substantial tree removal process to further enhance the course design. The enhancements also focus on providing the ideal conditions for the course to naturally mature and prosper.





Etched across over 4,000 acres of Central Texas Hill Country lay the masterful evidences of **Tom Fazio**, Palmer, and Crenshaw. Forget the Texas tales of Dan Jenkins; the Austin Hill Country shouldn't be confused with rock hard Goat hills. Barton Creek Resort, A Pinehurst Company Resort, shoulders four of the top 50 courses in Texas.

The highest ranked of these is the Fazio Canyons course, where one gets the feeling of playing a round all by your lonesome. There are no houses at this time and no parallel fairways right there in your vision.

Nowhere on the Canyons layout do you feel more secluded than on the par-3 No. 3, a 173-yard shot into a box canyon with Short Springs Branch Creek trickling down the right border. The Champions Bermuda green is quick and tricky and the flinty hillside surrounds you creating echoes in the silence.

The par-4 No. 9 features an unsettling tee shot and plays uphill 457 yards to earn the No. 1 handicap rating. If the length isn't enough challenge for you, anything hit right will find water, which is clearly in view from the tee, cascading down and glimmering in the sunlight, the entire distance of the hole.

No. 10 is just as beautiful, but a more manageable 450 yards downhill. Hit your tee shot right of the huge bunker, which guards the left at the bend of the dogleg. Then the approach must clear the creek right in front of the putting surface and includes limestone stepping stones from the fairway to the green. The scenic par-3 11th is next at 192 yards from the back and is encircled on all sides by trouble -- rocky hillsides frame the hole and the creek sprints down the left.

Canyons is a Hill Country escape. The limestone-rock hillsides feature prickly-pear cacti, aged, pink-skinned, Madrone trees, Spanish oaks, red oaks, junipers and sycamore trees on the 210 acres.



Welcome to San Antonio's Most Unique Golf Experience



Created by nationally acclaimed golf course architect, **Keith Foster**, The Quarry is recognized throughout the world for its unique setting and character. The front nine plays through native rolling grasslands while the entire back nine is nestled in a 100-year old quarry pit.

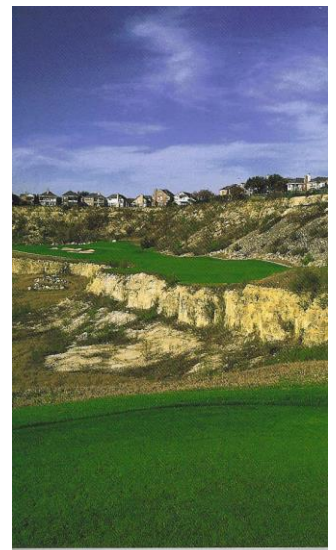
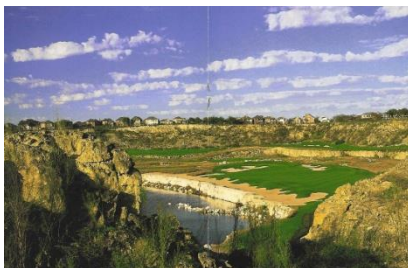
The course offers challenges to players of every skill level and will provide one of the most memorable rounds of golf that you will ever play. Your game begins on the traditional side of the course, reminiscent of Scottish links with deep heather rough, meandering streams and an occasional devilish bunker.



The first four holes let you settle into a rhythm, but the contest picks up with the Texas breeze. Hole names like "Water Grave" and "Devils Ditch" suggest the challenge that awaits you.



Then you cross to the spectacular quarry side. Imposing chasms, narrow bridges and winds swirling off the 100-foot limestone walls create a different kind of game. "Alcatraz," like its namesake in San Francisco Bay, can be treacherous. On hole 17, wryly named "Reload," you play from an elevated tee, over a deep valley, and to another ledge. The dramatic features of the quarry, ingeniously worked into the design of the holes, make a game that's simply unlike you'll find on any other course.





SPRING FORD COUNTRY CLUB

Once known as a "Hidden Gem", Spring Ford Country Club can be counted among the finer clubs in the suburban Philadelphia area.

The course, established in 1924, is a challenging 18 hole layout sloped at 134, with water in play on nine holes. Clubhouse facilities, most recently renovated in 1995, feature several dining areas, a full-service banquet facility, and a top-notch swimming pool for Spring Ford's members and their families.

Spring Ford was originally carved from the gently rolling countryside of Western Montgomery County, Pa. With Mingo Creek meandering through the acreage, water becomes an almost constant challenge. Sloped at 134 from the regulation tees, play is never dull.





On 350 acres of rolling, wooded, and some would say blessed, land 30 miles north of Detroit, **Arthur Hills** took a less-is-more approach to what he called "as good a piece of inland property as I've ever seen for a golf course." Hills shoehorned the holes into the site's ridges, valleys, and woodlands, producing a 7,236-yard, par 72 layout that more closely resembles the wilderness courses in the northern Michigan than it does metro Detroit area courses. No two holes are alike, each occupies a roomy corridor, all are faithful to the rise and fall of the terrain.



Shepherd's Hollow Golf Club

Clarkston, Michigan

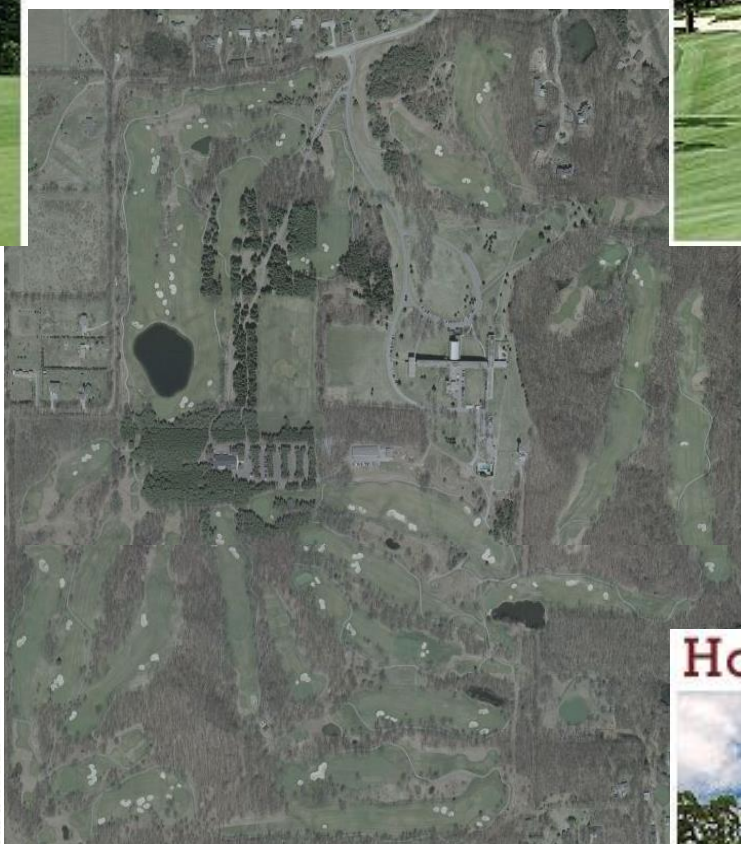
GOLF
MAGAZINE
Top 10
You Can Play
IN AMERICA



Hole 1 Par 4



Hole 20 Par 5



Hole 14 Par 4



Hole 16 Par 4

