

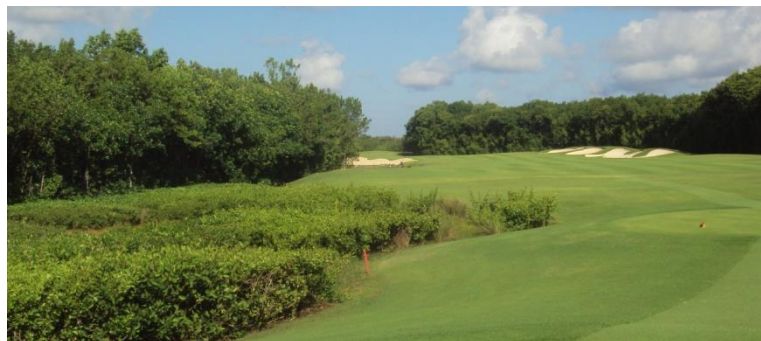


EL CAMALEÓN GOLF CLUB AT THE MAYAKOBA RESORT...

is another masterpiece of Australian golf legend, **Greg Norman**. The 7,039-yard course bends through three distinct landscapes - tropical jungle, dense mangroves, and oceanfront stretches of sand with holes bisected by massive limestone canals. The course even incorporates a cenote - an underground cavern common to the area - into the heart of the opening fairway. Norman balanced the course to make it enjoyable for golfers of all abilities; each hole is sprinkled with a minimum of five tee blocks, so there is a distance for every player.

While the course is a standout, the surrounding golf amenities are equally as stunning. The handsome clubhouse rises above the 18th green and the adjoining practice facility and driving range complete a superb golf experience.

In 2007, El Camaleón made history by becoming the first golf course to host an official PGA TOUR event in México and the first official PGA TOUR event ever contested outside of the United States or Canada.



The centerpiece of the Moon Palace Golf & Spa Resort in Cancun, Mexico is the first **Jack Nicklaus** Signature Golf Course designed exclusively for Palace Resorts and also the first Nicklaus course in the Cancun area.

This 18-hole championship golf course was designed to boost Cancun's appeal as a golf destination.

"Our goal was to design a golf course that would be fun and memorable to players of all levels. Perhaps one day, other courses in the region will try to compare themselves to Moon Palace," said Jack Nicklaus.

Created to harmonize with the tropical lushness of Cancun, this 7,165-yard, 72-par golf course features four sets of tees and is lined with native jungle

vegetation, natural wetlands and bunkers that have been strategically placed. Highlights include: the signature hole, number 17, a 151-yard, par 3, that plays downwind to an island green; the sixth hole, a par 4 that plays 336 yards and is drivable, but has a carry over water; and the finishing hole, a strong par 4 that plays 446 yards.

Beyond the course, the seven (7) outdoor pools are among the largest lagoon-style pools in all of Mexico. Each winds its way along the beach for more than 650 feet with Jacuzzis, swim-up bars, and children's areas. The full service spa features 39 treatment rooms and hydrotherapy facilities.

Palace Resorts is Mexico's best-kept secret, with seven all-inclusive resorts in Cancun and the Mayan Riviera.





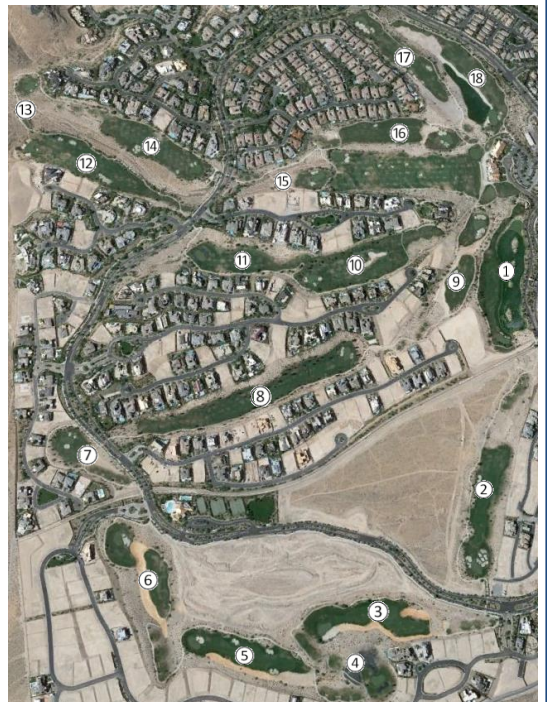
Bear's Best Las Vegas is a unique golf course made up of 18 holes hand selected by **Jack Nicklaus** from his 270 designs worldwide. This high-end daily fee course includes manicured bent grass greens, challenging designs, and immaculate fairway/tee complexes.

You've got a wide selection of the Golden Bear's designs here from places such as Old Works Golf Course in Montana (complete with black-sand bunkers), Castle Pines in Colorado (complete with pine trees) and many more that will tantalize the senses.

And best of all, it's all at one golf course located just minutes from the Las Vegas Strip.

"It's just an amazing design concept by Mr. Nicklaus," said Jim Stanfill, general manager. "It differentiates itself from everything else out there. Mr. Nicklaus took some of his best designs and put them together right here in Las Vegas."

"It's kind of like going down to the Strip," Stanfill said. "When you're there, you can go from Italy to France to the South Pacific. It's the same type of experience here."





TUSAWILLA
COUNTRY CLUB

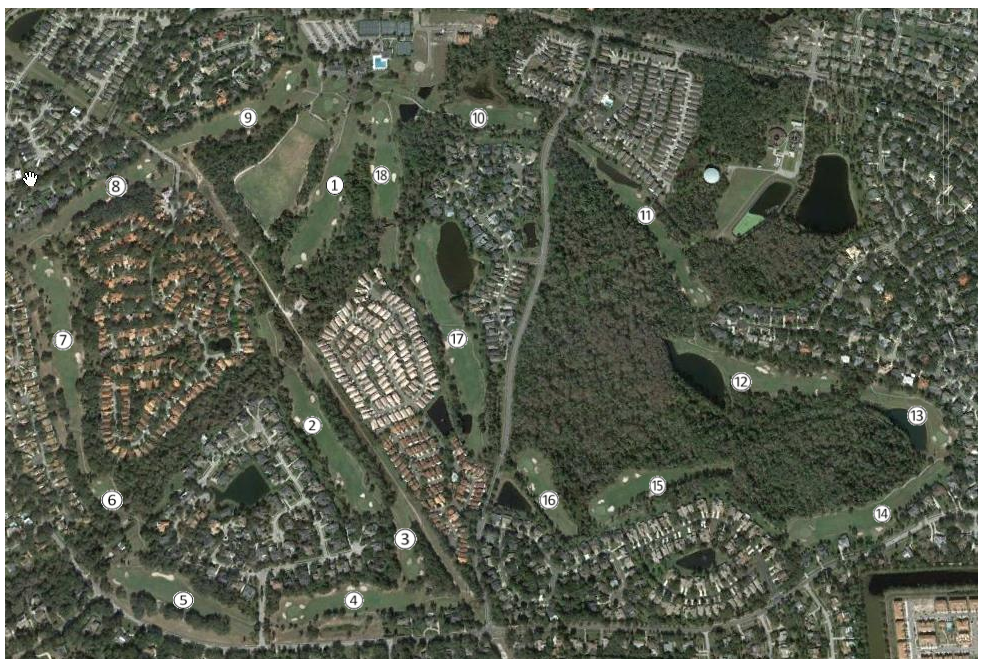
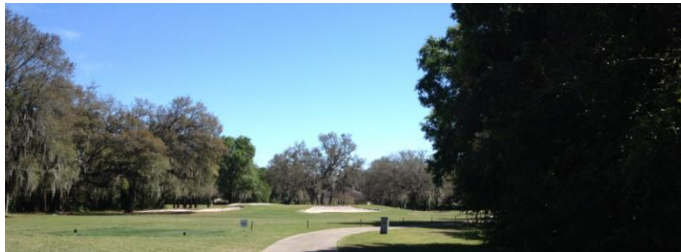


Tusawilla Country Club is an exclusively private country club providing a home-away-from-home atmosphere with stately Live Oak trees draped in Spanish moss surrounding the course and with gently rolling terrain to enhance its beauty.

The centerpiece of Tusawilla Country Club is an 18-hole golf course designed by noted architect **Joe Lee** in 1971. The tree-lined course spans 6,851 yards, winding peacefully through some of the most pristine land in the state.

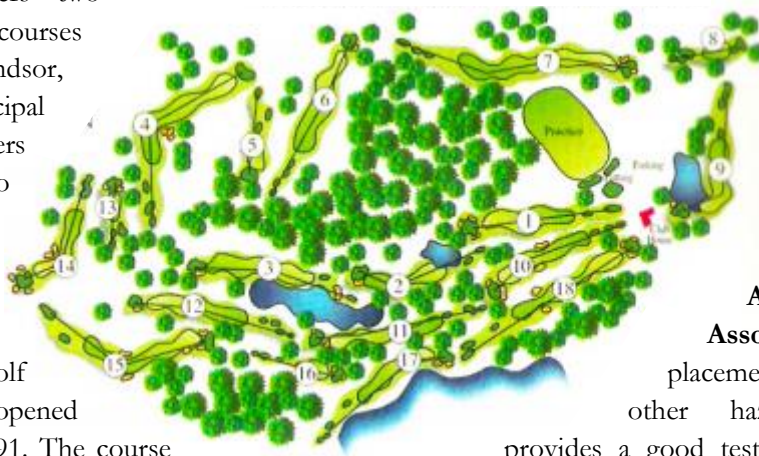
Length off the tee is rewarded, but is not a necessity. You can score on this course if you can keep the ball below the hole on most of the greens. Fairways are mostly tree-lined but there are ample fairway landing areas. Greens are on the large-ish side (approximately 4500 sq/ft.) and are somewhat sloped.

Scarier than a double bogey, many believe that Tusawilla is haunted. According to staff, on the last Friday of every month the ghost of a young man is seen washing down the bar. No one has any idea who he could be, but some claim he was violent and attacked them.

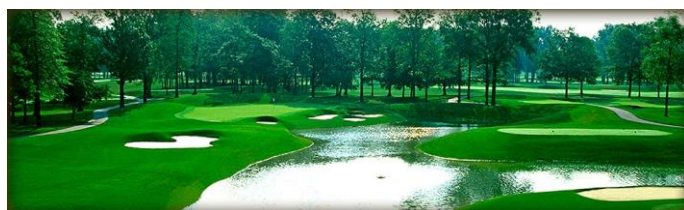




Mercer Oaks offers two championship courses located in West Windsor, NJ. The municipal course offers amenities second to none for a daily fee facility. Mercer Oaks West is an 18-hole championship golf course which was opened to the public in 1991. The course was built in a traditional style with tree lined fairways, ample bunkers, and challenging greens.



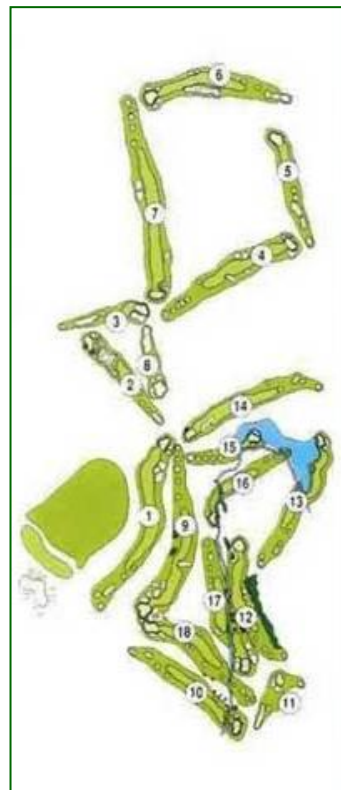
The course is a part of the landscape of Mercer County Park and Lake Mercer. It has large greens and bunkers. Through strategic design, by **Ault, Clark & Associates**, and careful placement of bunkers and other hazards, the course provides a good test of golf. From the championship tees, the course measures over 7,000 yards with a par of 72.





Royal Oaks is graced by the natural beauty of the Lebanon Valley and has become one of Central Pennsylvania's most prestigious golf courses.

The **Ron Forse**-Design, 18-hole championship golf course offers dramatic views, lush fairways and pristine emerald greens for an unforgettable golf experience.



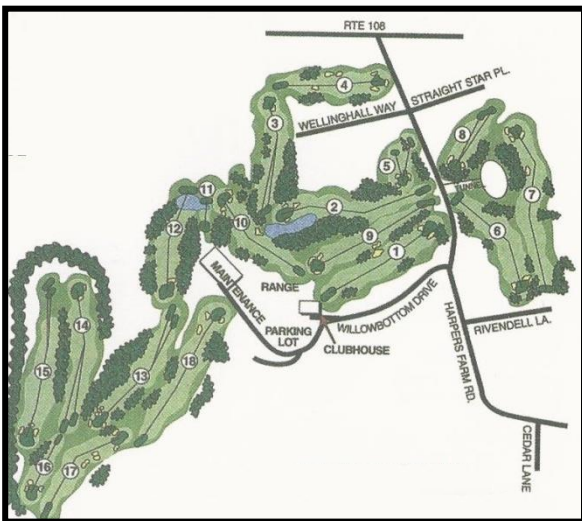
Hobbit's Glen Golf Club offers a private club, a plush course with lush green fairways. Carved through and around the Maryland timber, the course is maintained with an astute attention to detail. The natural features of the area of the site to create an unparalleled golfing adventure. This par-72 golf course plays just over 7,100 yards from the back tees and 5,400 from the front and was designed by **Edmund Ault**. In 2011, the CA Board approved up to six million dollars to either renovate or replace the

clubhouse at Hobbit's Glen Golf Club. The clubhouse was more than 40 years old and in need of several necessary renovations, as well as some desired



enhancements. According to direction from the Board, the design effort was to be collaborative, including involvement from stakeholder groups and the community.

The original clubhouse was constructed in 1967. From historical accounts, the original structure was the result of economic-based compromises; severely reduced in size and grandeur from the originally planned structure. Further, accounts from various persons and organizations refer to the current structure as "temporary." The facility has had several additions to accommodate the changing needs of the community since the initial construction.





With stunning Los Peñasquitos Canyon as his canvas, **Tom Fazio** created a masterpiece of dramatic elevations, diverse bunkering and lush fairways. Graced by Pacific breezes from the nearby coast, and awash with Southern California glow, The Grand Golf Club is San Diego's premier golf resort.

Voted "Golf Course Architect of the Year" three years in a row by Golf Course News, Tom Fazio is renowned for his strong sense of environmental design and challenging-but-fair golf. Perhaps that's why 14 of his designs made

Golf Digest's list of America's 100 Greatest Golf Courses.

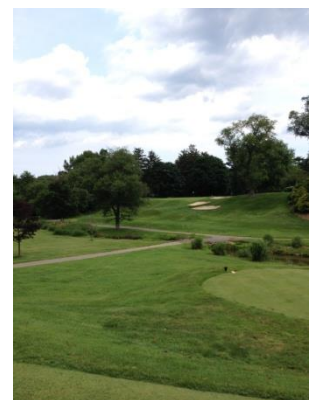
Thanks to San Diego's renowned climate, you can play year-round on the private rolling greens: The beautiful fairway bunker and perched green reminiscent of an infinity-edged pool on the 4th. The par 3, risk reward 17th bordered by an intimidating lake. The generous fairways, large undulating greens and distinctive bunkering - all just a few of Fazio's trademarks present throughout the course.



Woodcrest Country Club is a **William Flynn** designed course situated on 178 pristine acres in Cherry Hill, New Jersey. Built in 1929, the course continues to offer players impeccable conditions including, well-manicured fairways, slick greens and deep bunkers. Previously a private country club, Woodcrest is now operating as a semi-private course, open to the public year round. The magnificent views and beautiful landscaping is a testament to the legacy golf-course-architect William S. Flynn. Flynn was responsible for the creative aspects of the course, while the technical aspects of the course were manipulated by civil engineer, Howard C. Toomey.

Deceptive yardage is but one surprise on this course, natural sloping terrain, narrow fairways and unexpected hole-sequences will also keep the golfer alert and challenged. Flynn believed each hole should have “problems developed” that challenge the player. These challenges are known to be; first: accuracy, second: carry and third: length (including carry and roll).

Flynn was known for bringing individual character to the designs he created for each hole. Woodcrest is proud to be home to all of his designs and most prominently, arguably the best closing hole in all of South Jersey.



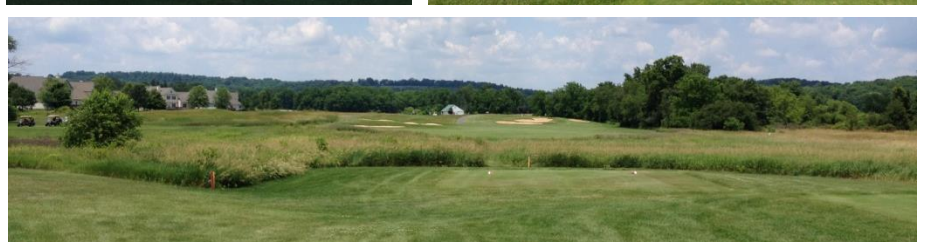


Hawk Pointe Golf Club is one of the finest golf courses in Northwest New Jersey. The course provides golfers with a chance to get close to nature on a majestic 18-hole, par-72 course designed by **Kelly Blake Moran**. The course dedicates 80% of its surroundings to open space in some form of parks or recreation, wildlife conservation, historical preservation, and alternative energy.

Hawk Pointe incorporates 250 acres of rolling hills and lush tree lines. The reason behind this is to

respect the open space, the wetlands, the historical features of the land while not disturbing the neighborhoods surrounding the space.

Hawk Pointe would become known as a multi-generational place where families could gather and play, meet, or spend time together. Hawk Pointe Golf Club is a private, non-equity golf facility which fosters a sense of community among members and families.





Country Club of Vermont



With a small membership and limited outside play, The Country Club of Vermont provides a challenging but virtually private tour through the spectacular Vermont countryside. CCVT opened for play in 1998. The course was designed by **Graham Cooke** who called the location "enormously powerful." Sitting on over 200 acres, with no residential construction, travel between holes is minimal, yet each feels secluded, with little or no view of surrounding holes. With lovely views in all directions, it truly is a remarkable setting for a remarkably executed course.

The visually imposing front nine is a "links" environment featuring the natural terrain's rolling hills, berms and splendid scenery. Players then go "into the woods", enjoying a back nine of tree-lined fairways, sparkling brooks and some challenging but equally beautiful mountain landscapes.

Golfers and non-golfers alike have described the site as a magnificent setting for a golf course. The course evolved from a 225-acre parcel of open and wooded land that was part of a larger 415-acre plot. The remaining 165 acres are deeded to Vermont Land Trust to remain undeveloped in perpetuity. There is no residential traffic through the course.

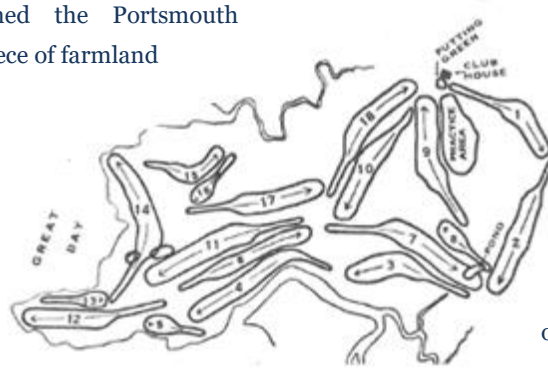
With six sets of tees per hole, the course is playable for golfers of all levels; the greater a player's ability and imagination, the greater the shot options and potential risks and rewards. At 6,788 yards from the "tips", the championship "Black" tees provide ample challenge for the low handicapper, demanding that every club in the bag be used.

Lastly, the course is always in absolutely pristine condition from opening through October's fall foliage.



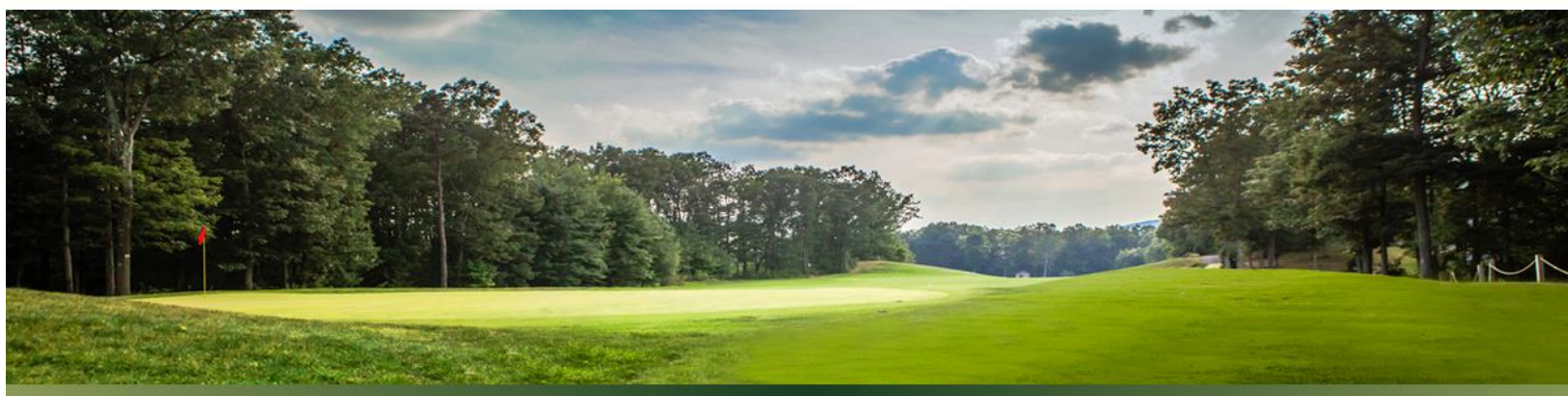
In 1901, a group of Portsmouth men who wanted to have a place of their own to play golf, organized and established the Portsmouth Country Club. They bought a piece of farmland and hired Alex Findlay, a course architect, to build them a nine hole golf course. A course was built and in five weeks they were playing golf on it. Thirty-two years later nine more holes were added. In the 1950's the U.S. Government decided to build a bomber base in New Hampshire. They took the property by eminent

domain forcing the club to find a new location. The original course is now the Pease Golf Course.



The present property was bought for \$40,000. Renowned golf course architect **Robert Trent Jones** was hired to lay out an 18 hole course which was built in 1956 and opened for play in July 1957. The original clubhouse, built in 1956, was replaced in 1998 with the present building.





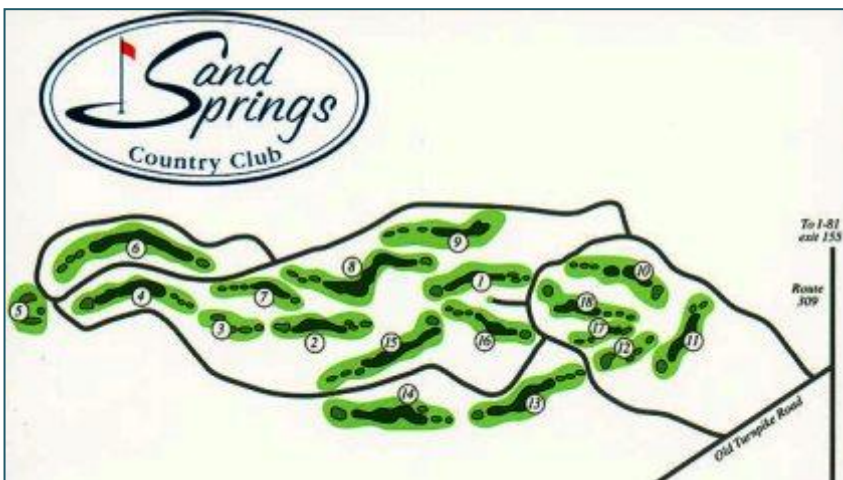
6,613 yards of paradise...

Stand on the first tee of Sand Springs Country Club, "The Public's Country Club," and you soon realize this is more than a round of championship golf. It's an escape from reality.

For the next few hours, everything else fades away as the day becomes the perfect mix of shot-making challenges and natural beauty. Bent grass greens, tees and fairways carved from the Pennsylvania

woods creates the ultimate test of shade, sun, and surprises for players of every skill level.

Designed by **Scott Leonard**, the course features tight fairways and several difficult carries over hazards and ravines. Nestled along the Nescopeck Ridge in Luzerne County, PA, Sand Spring Golf Course is the area's finest public course, near the intersection of I-80 and I-81—the perfect location for local golfers and visitors alike.





The 18-hole "Bellewood" course at the Bellewood Golf Club facility in Pottstown, Pennsylvania features all the hallmarks of Pennsylvania golf. The par 71, 6825-yard layout is sculptured through 171 acres of naturally rolling terrain. Two distinctive nines give the player the best of both worlds. The front nine is very much a links-style course with gentle rolling hills and emerald fairways highlighted by the tall yellow fescue grasses and natural wetlands. While the back nine is a picturesque wooded layout framed by towering oaks, pines, and bordered by pink and white dogwoods. Designed by **Tom Drauschak**, the Bellewood golf course opened in 1999 and its focus is on members with a no tee time policy and wild greens that only a member could understand and love.



Situated less than a mile from the Pacific Ocean, not far from the historic Huntington Beach Pier, SeaCliff Country Club re-defines the private golf club experience. Blending the time-honored traditions of golf with modern, upscale conveniences, the club boasts a magnificent **J. Press Maxwell**-designed championship layout that is sculpted from the rolling hills of Huntington Beach. SeaCliff Country Club's spectacular par-72, 6,935-yard championship layout leaves the surrounding terrain completely natural. Lush stands of mature oak trees and swaying palms frame undulating Bermuda fairways and manicured greens, in perfect balance with nature – with deep roughs, expansive bunkers, and an abundance of sparkling water features creating both strategic diversity and a picturesque backdrop for golf.

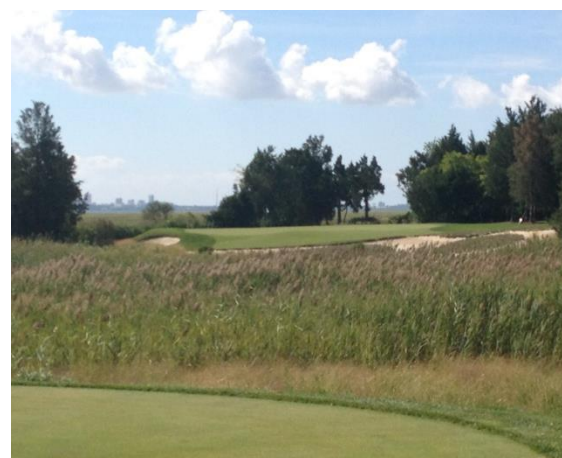
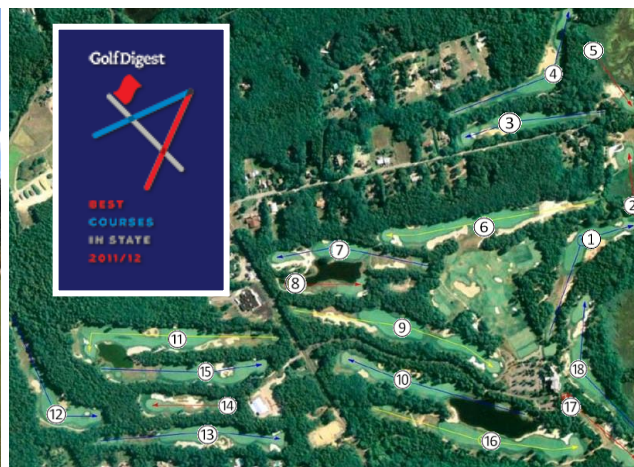


Galloway National Golf Club is a private, world-class, 18-hole championship golf course designed for the serious golfer. World renowned architect **Tom Fazio**, meticulously crafted Galloway National's 7000 yards out of a 200 acre tract of heavily wooded, gently sloping bayside property. "Galloway is one of my best ever," said Fazio. It is a dramatic and fair golf course designed to bring joy to the serious golfer. Natural contour changes, pine forest, sand and water are the "tools."

Tees with breathtaking views, inviting fairways, challenging hazards, and beautifully situated greens are your reward.

The inspiration behind Galloway originated with a group of dedicated golfers who share a deep sense of commitment to the game. Club management is approached in the same way. Facilities rival the finest in the world and are designed to enhance the unique golf experience.

Golf Digest recently named Galloway one of America's best private golf clubs.



McCullough's Emerald Golf Links, **Stephen Kay's** timeless design, offers players a distinctly different Irish-Scottish golfing experience. With wide open fairways, tricky powerful winds, remarkable grass mounds and bunkers, vast natural waste areas, and true undulating greens, players will be reminded of the challenge and allure of true British Isles golf.



USGA Rules govern all play

Local Rules

- Soft spike shoes and proper dress required.
- Please repair ball marks, replace divots and rake bunkers.
- Play "Ready Golf," maintaining a 4 1/2 hour Pace of Play.
- Every group must keep up with the group in front of them.
- Please cooperate with player assistants in maintaining the Pace of Play.
- Hazards are defined by Yellow and Red Lines or Stakes.
- Out of Bounds are marked by Fences, White Lines or Stakes.
- Blue Octagon caps are immovable obstructions (Rule 24 – Free lift one club length no nearer the hole).
- No outside food or beverages.
- Cart drivers must be 18 years of age with a valid driver's license.

Sprinkler Heads and Yardage Markings are measured to the center of the green.

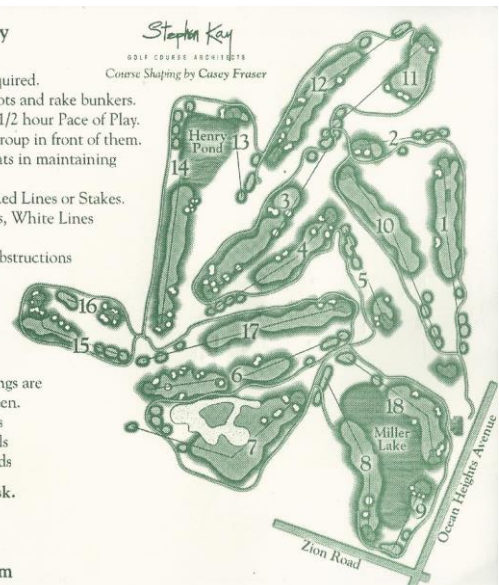
Red/White Poles are 100 yards
Black/White Poles are 150 yards
Yellow/White Poles are 250 yards

All golfers play at their own risk.

Phone 609.926.3900

Fax 609.926.3910

www.mcculloughsgolf.com

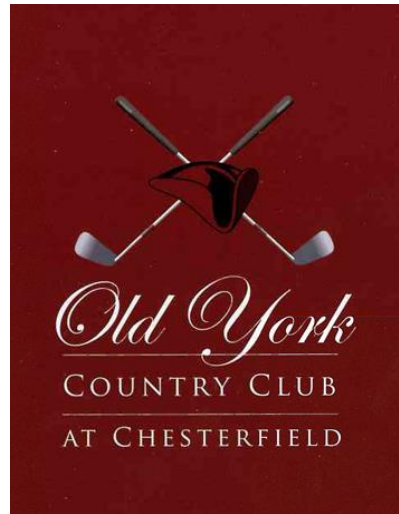


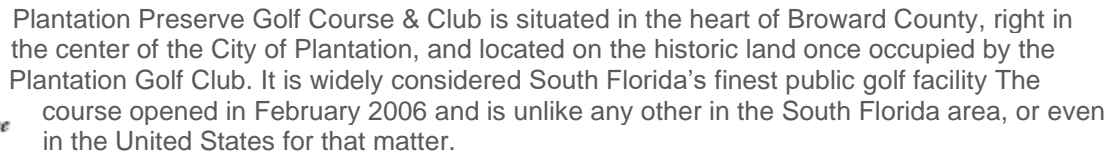
Old York Country Club features a **Gary Player** signature design in a bucolic, historic setting. Gary Player is renowned worldwide for his exceptional golf course designs and skillful vision that seamlessly weaves courses into their natural settings. On the beautiful Chesterfield grounds, Gary Player and his design team have sculpted a breathtaking 6,903-yard golf course that uniquely blends the natural landscape of a former 180-acre equestrian estate with the exacting standards of world-class course design.

Old York Country Club has been acclaimed in equal parts for its playability and conditioning. The course boasts rolling fairways carved around

native grasses and majestic trees. Visitors love the elevation changes of up to 75 feet, deep bunkers and meticulously manicured greens -- all adding drama as well as aesthetic beauty and visual appeal to the course.

This Chesterfield golf course also boasts five or more tee positions. Golfers of all ages and skill levels will enjoy the strategic course design offering traps and challenges that meld with the natural terrain, creating a course-scape that respects and celebrates the integrity of the land. This is a must-play course.





Plantation Preserve
GOLF COURSE & CLUB





SunRidge Canyon is 6,823-yards of championship golf carved into the canyons of Scottsdale's McDowell Mountains. One of the **Top 100 Courses** You Can Play in the U.S. (as rated by Golf Magazine). Host of the 2014 Titleist & FootJoy **PGA Club Professional Championship of Canada**. This stunning, multiple award-winning golf course is certainly on any golfer's bucket list.

This **Keith Foster**-designed golf course unfolds around the rugged ridges and shady canyons unique to the desert mountains that divide Fountain Hills from Scottsdale, Arizona. This Scottsdale golf course gradually descends on the way out before doubling back to climb up the slope on the way in. This subtle elevation change lies at the heart of the dramatic golf experience at SunRidge Canyon. Golfers also discover that it wasn't so much created by a bulldozer as it was carved out over eons by the relentless pressure of wind and water. Foster had the good sense to follow Mother Nature's lead, and in the end, the beauty and challenge of SunRidge Canyon is unlike any other desert golf experience in the Valley of the Sun.





Scottsdale



Located just outside of Scottsdale, Arizona and only a half hour from Phoenix, TPC Scottsdale offers two legendary championship courses that are both open to the public to enjoy – The Stadium Course and the Champions Course. The Club is the permanent home to the Waste Management Phoenix Open (formerly The FBR Open), and hosts many other events throughout the year. TPC Scottsdale has been named “one of America’s best courses” by Golfweek Magazine, one of the Top 50 Golf Resort Destinations in the World” by Condé Nast Traveler, and is consistently named one of the top courses in Arizona.

The Champions Course

Rivaling its famous sister course in both beauty and playability, the **Randy Heckenkemper**-designed Champions Course offers an ideal desert golf experience. Built on the former site of TPC

Scottsdale’s Desert Course, the layout was completely revamped in 2007 to flow seamlessly within the naturally rugged terrain, meandering between natural ravines and through picturesque foothills.

The course was crafted to balance strategy with design, so as not to favor any one type of play. Each hole can be played a multitude of ways – providing golfers of all skill levels with a challenging experience that can be significantly different each time they play. A quartet of challenging finishing holes adds an acclaimed ending stretch that promises to leave even the best players with goose bumps.

Fees commensurate with municipal golf facilities and a championship golf experience throughout make The Champions Course one of Arizona’s “must-play” tracks.



Established in 1952, the 141 acre, 18 hole Indian Spring public golf course is located in the heart of historic Evesham. Along with a spectacular course is an outstanding practice facility with 40 lighted range mats and an excellent short game practice area. The 18-hole par-70 course features 6,328 yards from the longest tees.

Indian Spring Country Club is enrolled in Audubon International's Cooperative Sanctuary Program for Golf Courses to ensure that the course helps to protect our local environment, conserve natural resources, and provide wildlife habitats.

The architect for the course is unknown. There are several unique holes set at intriguing angles but for the most part Indian Spring is typical of municipal golf in South Jersey, flat and set at a back and forth routing for each nine. The conditions and clubhouse make up for the uninspiring design and topography.

