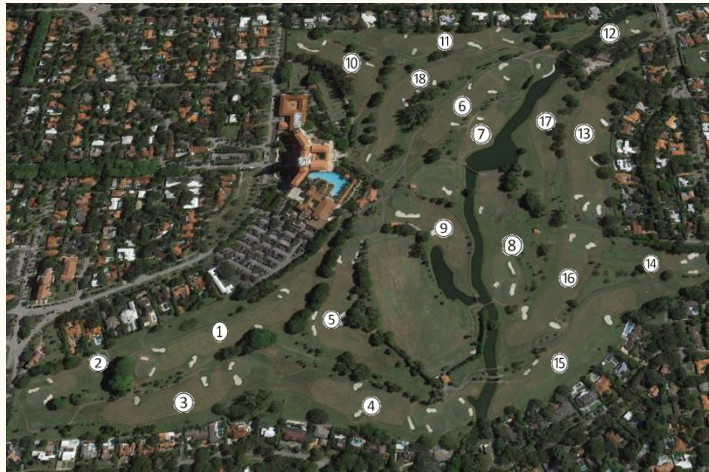


The classic 1925 **Donald Ross**-designed golf course at the Biltmore is a template for an era of the traditional game. It only takes a walk off the fourth green to know -- you are immediately on the fifth tee box.

Perhaps only Seminole up in North Palm Beach is a better example of Ross' traditional golf-course design in Florida. It is a typical Donald Ross course that doesn't really beat you off the tee.

The defense comes when you get to the greens -- many are turtleback greens like you find at Pinehurst No. 2.

If you look closely every green has a fall off to a collection area. It can be a false front or a side or back that slopes away making for a challenging bump and run or pitch shot. The Biltmore is a must-play golf course for the Ross devotee.







Originally opened as Bayshore Golf Course in 1923 as part of pioneering developer Carl Fisher's ambitious Alton Beach subdivision that was designed to lure wealthy winter residents from New York, Indianapolis and Detroit, Miami Beach Golf Club has undergone recent transformations making it South Florida's premier public golf destination

The City of Miami Beach hired **Arthur Hills/Steve Forrest** and Associates for the latest and most extensive transformation. The once tired and under-utilized Bayshore has now become a beautifully restored landmark that will be enjoyed by South Florida residents and visitors from around the world for years to come.







Forget about any shot you've ever played, any course you've ever visited. When it comes to golf at Streamsong, there is no comparison. Because for the first time in their considerable careers, renowned golf architects Bill Coore/Ben Crenshaw and Tom Doak worked side-by-side simultaneously to create two extraordinary 18-hole golf masterpieces.

With its multiple elevation changes, fairways navigating wild grasses and deep-water ponds, and huge bunkers that roll off of towering sand dunes, Streamsong Blue seems designed by discovery rather than by intention. Created by renowned architect **Tom Doak**, the course features spectacular terrain, with rises and falls in elevation, and contours that undulate.

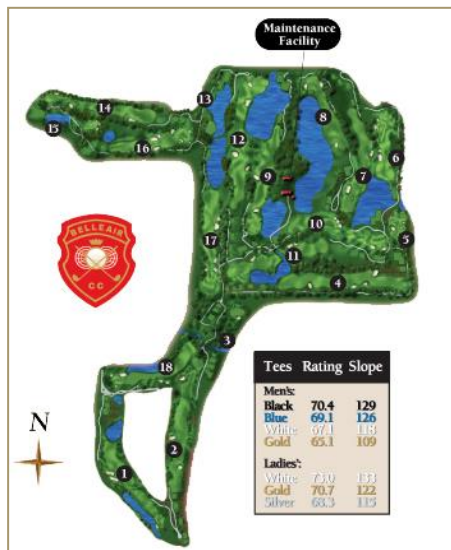
Known for his design philosophy of routing around the natural features of the land, Doak noted, "Now we get to use these dramatic changes as the centerpiece to our golf holes." All together, they combine to offer some of the most stimulating holes in golf.



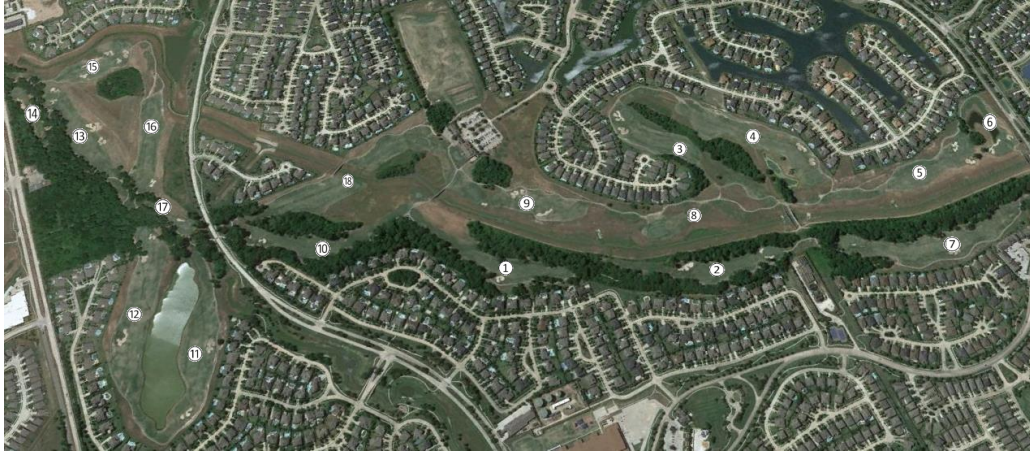
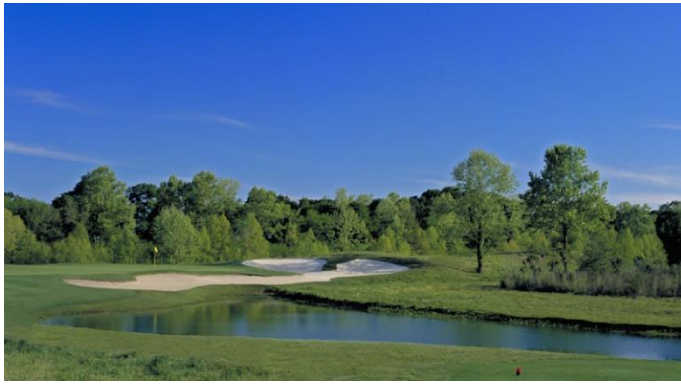




A Gulf Coast paradise and historical landmark, perched on one of the highest points of Clearwater Bay, Belleair Country Club proclaims to be the first golf course in Florida. The golf courses at Belleair Country Club have been a grand tradition since **Donald Ross**, the world-renowned golf course architect, designed both 18-hole courses. The splendor remains as he envisioned with the challenge of play and an unforgettable experience. The East course is the more challenging of the two courses, though is still a fun course to play. Not overly long, with the tips measuring just 6,253, the course is nonetheless difficult, owing to typical Ross green complexes -- complete with dome-shaped greens, deep bunkers and collection areas for wayward shots. This makes the course rating a challenge to those who lack a confident short game.







Meadowbrook Farms' golf course design is unlike any other in the Houston area. This **Greg Norman** Signature Course features sod-wall bunkers with white sand and greens that are generous, subtle and approachable. The par-72 course is nestled among a multitude of hardwood trees, creeks, lakes, and wetlands terrain - framed by true native prairie grasses and wildflowers - all of which promote creative shot strategy.

Among the facility's most notable features are its GN-1 (hybrid Bermuda grass) tees, fairways, and roughs all created by Greg Norman Turf Company. The putting greens are Floradwarf and the perimeter

roughs are native grasses and wildflowers. Perched above the 9th and 18th greens, the Clubhouse offers sweeping views of the golf course while expressing the warmth and comfort of a Texas ranch.

"From day one, being selected as the designer of Meadowbrook Farms was always a privilege. Members will discover a challenging course built in harmony with the site's trees, creeks, lakes and wetlands. Meadowbrook Farms ranks as one of my most favorite courses and also holds the distinction as being my only course in the state of Texas," said Greg Norman.





## Cowboys Golf Club



Cowboys Golf Club is the premier resort-style, daily-fee golf course in Texas that is the world's first NFL-themed golf course.

Owned and operated by Eagle Golf, Cowboys Golf Club was designed by **Jeffrey Brauer** and opened for play in 2001. It was quickly recognized as one of the best golf courses in Texas. In fact, since then some of the awards and accolades include:

- #1 Daily Fee Facility in the DFW area by the Dallas Morning News
- #1 ranked course in the Southwest by Zagat
- Honorable mention in the Top Ten Courses You Can Play by Golf Magazine
- #1 Daily Fee Course in the Metroplex by Avid Golfer
- #22 in the Best Public Courses in America by GolfWorld Magazine

Jeffrey Brauer did a superb job of leveraging the natural terrain of the 159 acres that the course plays through to create a scenic as well as fun and challenging 18 holes. He worked closely with the City of Grapevine and the Army Corp of Engineers to preserve the natural environment and create a unique DFW golfing experience. This is one of those courses that will throw a lot at you and test your game from the tee box to the cup – there is an oasis of trees, waterways and natural habitats, dramatic elevation changes, forced carries, dog legs, huge treacherous bunkers, contoured fairways, and complex greens.

Cowboys Golf Club is tough, but fair and if you can hit the ball fairly straight, avoid most of the bunkers, and putt, you'll have a good score.







Newcastle boasts two championship courses that cover 350 mountaintop acres. Designed by **Robert E. Cupp**, in consultation with Masters Champion **Fred Couples**, both Coal Creek and China Creek offer unique golfing experiences that will reward any lover of the game with great layouts and spectacular views of the Puget Sound area. Similar to the Coal Creek course to the north, China Creek combines mesmerizing views with layouts that provide challenge and variety for golfers of all abilities.

Golf course architect Robert E. Cupp integrated the site's gently rolling terrain throughout the 6,632 yard course which encompasses five par 3's, nine par 4's and four par 5's with many natural preserved areas to add to the drama and excitement. Golfers will encounter undulations on several fairways and can anticipate well placed bunkers throughout the course. As with Coal Creek, the superbly conditioned greens are sensational, promising true roll.

Trees are more prevalent on China Creek, notably on #14 where they define the green. Elsewhere on the course, water may come into play as on the 10th hole where the green is partially guarded, a false front awaits you on the 13th green and golfers will find a challenging two-tiered green on #17. The finishing hole requires an accurate tee shot over a large ravine to an uphill, sloping fairway. Providing the backdrop to the home hole is Newcastle's spectacular clubhouse which one golf writer described as "worthy of English royalty".

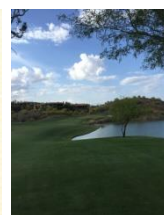
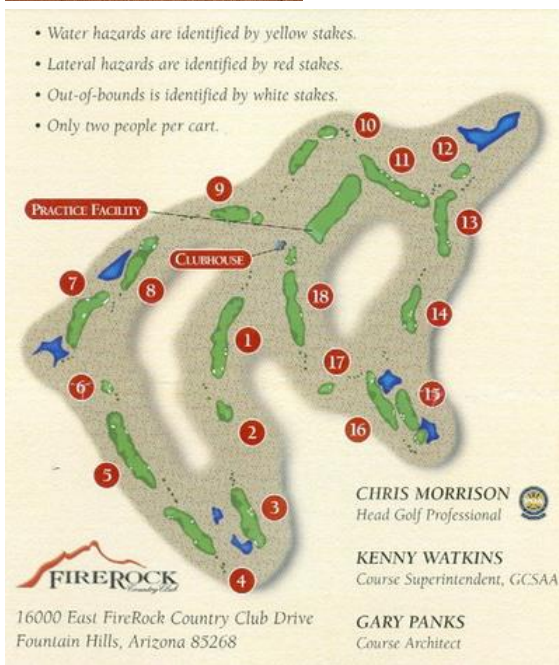




Situated in the cozy community of Fountain Hills where life takes a breather from the hustle and bustle of its larger neighboring cities, FireRock stimulates your senses. Nowhere will you see, hear or feel a round of golf like the one you'll experience at FireRock Country Club.

Meticulously crafted from the desert terrain, FireRock Country Club, with its inherent beauty, is a world-class golf facility. Designed by

foremost golf course architect **Gary Panks**, FireRock features 18 holes of championship golf. Lush, rolling fairways that hug canyon washes, elevated tee boxes exposing spectacular scenery and undulating greens provide the ultimate risk-reward opportunities on every hole. Voted by the Arizona Republic as the "Best New Golf Course" when it opened in 2000, FireRock Country Club has lived up to its lofty status every day since then.







SCOTTSDALE, Ariz. – The new Ambiente course at Camelback Golf Club sits on land previously occupied by the Camelback Golf Club's Indian Bend golf course – an underwhelming track with no character whatsoever. In fact the bland Padre course was formerly the stronger of the two layouts at the resort – sad to say.

So in 2013, Camelback invested \$10 million to renovate Ambiente. Actually, it's more like an entirely new course, built within the confines of an out-and-back routing that placed severe constraints on architect **Jason Straka**.

"For a multitude of reasons, it was probably the most difficult job I've ever worked on," said Straka, of Fry/Straka Global Golf Course Design. (The firm previously was known as Hurdzan/Fry.)

The course sits on a flood plain, so no dirt could be added or taken from the site. A civil engineer assigned to the project developed a model of a 100-year flood event, and Straka's routing and grading plans had to be tested repeatedly to meet that standard. The course straddles the Indian Bend Wash, which Straka said was lowered from 2-8 feet, depending on the location, with the fill used to raise the fairways.

Hundreds of nonindigenous trees were removed, and Straka reduced the managed turf from 210 acres to 90 – a key point in Marriott's positioning of its golf courses. Straka said he tried to bring a high-desert feel to Ambiente. Ambiente's native grasses and wildflowers should frame the holes with a tableau of colors that changes throughout the year.

The available fill was used to provide elevation and texture to Ambiente's fairways and green complexes – a much-needed shift away from the flat and forgettable Indian Bend layout. Straka noted that there now is more elevation change just on the short, par-4 10th than there had been on Nos. 7-14 of the original layout.

Today, Ambiente is Camelback Golf Club's top attraction, and that's reflected in the pricing and demand for play. The reborn 7,225-yard, par 72 course is now a dynamic layout that will be sure to test any golfer's skills while offering a rewarding golf experience.







TUCKED AWAY in a corner of Chatham County is one of the best-kept golf secrets in North Carolina. Despite its location in the middle of the bustling metropolis formed by Durham, Chapel Hill and Raleigh, Old Chatham Golf Club is a private retreat with a low profile.

Nestled back away from O'Kelly Chapel Road, Old Chatham's entrance is easy to miss from either direction. Reminiscent of another Carolina classic—Yeamans Hall in Charleston comes to mind—there are no signs to indicate the driveway into the club, which is full of rewards, starting with the **Rees Jones**-designed golf course in a pine forest neighboring Jordan Lake.

Less than a decade old, Old Chatham looks like and has the ambiance of a classic club and course steeped in the game's finest traditions. This throwback experience was the very idea the club's founders, business leaders in the area, had in mind when establishing Old Chatham in 2001.







Centrally located in Monroe Township in Middlesex County, Forsgate Country Club is an exclusive, private Country Club that has been voted one of New Jersey's best golf courses, Forsgate offers 36 of the most challenging holes in all of New Jersey on two distinctly different championship courses. The legendary Banks Course renowned for its deep bunkers and lush greens and the scenic Palmer Course renowned for its challenging water hazards.

The Banks Course was created by **Charles “Steamshovel” Banks** in 1931. Banks, was a disciple of and assistant to CB McDonald and Seth Raynor, the minds behind America's first golf courses – including Chicago Golf Club (the first 18-hole golf course in North America) and National Golf Links, among many others. McDonald's ideas for design came directly from his mentor – golf pioneer Old Tom Morris in Scotland – and he imparted those principles to Banks, who applied those touches to Forsgate. Thus the course's layout reflects the game's origin and history.

Forsgate is a special place- like fine works of art, each hole at the Banks course bears a story and meaning. On hole after hole, Banks pays homage to National Golf Links, St. Andrews, Carnoustie, Biarritz, a chocolate drop – which, if you're wondering, is a large mound surrounded by sand, also serving as a directional marker for a blind tee shot. The course tests you and impresses you, but is playable and fun, featuring five sets of tees; even the dauntingly deep bunkers are not impossible to escape.







In the late 1920's, Medford Lakes was a very popular vacation community located in the New Jersey pines. One of Medford Lakes prominent citizens, Leon Todd, believed that a golf course was needed to provide its residents and summer visitors with a complete range of recreational and sporting opportunities.

In 1929, Leon Todd's dream became a reality when the Medford Lakes Development Company acquired the 115 acre Shrider Farm. This group then hired a Scotsman, **Alex Findlay**, to design and build the original nine holes of the Medford Lakes Golf Club.

Findlay was a prolific golf course architect with at least two hundred designs to his credit, including such area courses as Tavistock, Llanerch Country Club and Burlington Country Club. At Medford Lakes, "His skillful use of both water and trees gave the course, though on the short side and with few changes in elevation, both interest and charm. It opened for play in 1930".

For its first 40 years, Medford Lakes played its golf over the original 'Findlay' nine holes. In 1969, after acquiring additional land from the Todd family on the north side of Tabernacle Road, the club decided to expand the course to eighteen holes. **Harold C. Purdy**, who had apprenticed as a construction supervisor under Robert Trent Jones in the mid-1950's, designed and built the new holes.





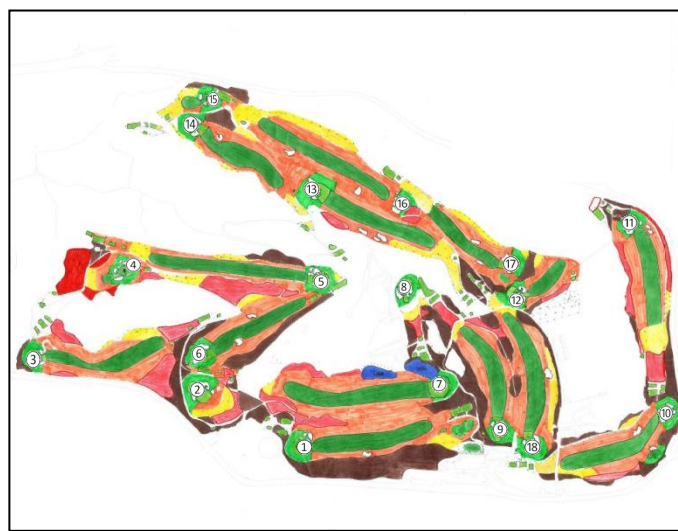
# PALOS VERDES GOLF CLUB

Palos Verdes Golf Club opened on November 15, 1924. The golf course was designed and built by the team of **William P. "Billy" Bell** and **George C. Thomas**. It is a classic example of courses built during the era that has become known as the "Golden Age of Golf Course Architecture". Other examples of their work in Southern Calif. include, the North Course at Los Angeles CC, Riviera CC, Bel Air CC, as well as the Ojai Valley Inn Golf Course.

The course is located in the middle of an 800-acre parkland preserve overlooking Santa Monica Bay with ocean views visible from several holes. It underwent a complete renovation in 2013 to restore it to its original design under the supervision of golf course Architect Todd Eckenrode of Origins Golf Design. All bunkers were

re-built, three greens were re-built while adding chipping areas around all greens, three new fairway bunkers, new back tees were added to holes where appropriate, and several trees were removed to restore ocean views that had been lost over the years.

While not long in length by modern standards at 6219 yards par 71 (6490 from the black tees), four sets of tees provide a challenge for all level of golfers. The combination of barrancas, creeks, and 74 bunkers requires strategically placed tee shots and accurate approach shots to small well-manicured greens. The front nine is one of the few courses with what is called a "perfect nine" in that there are no two consecutive holes with the same par.







# GOLFANLAGE BAD ABBACH - DEUTENHOF



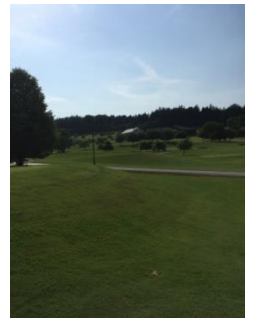
Nestled in a hilly landscape, not far from the Danube, Bad

Abbach-Deutenhof was opened in 1996 designed by **Rainer Preißmann**. It features an extraordinarily generous design which extends over an area of 110

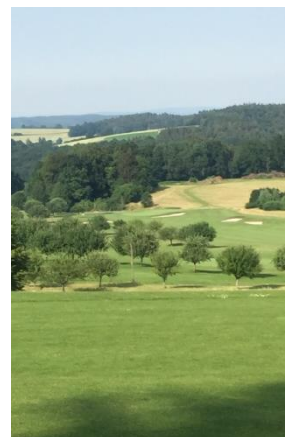
hectares. Meadows and forests flank this beautiful par 72 course. The course provides a wonderful view with flowering canola fields, flowers and endless high roughs.

Due to its optimal drainage and overall design the course can be played even

after heavy rains. In the very dry summer months of recent years, fairway irrigation has proven and permitted a virtually undisturbed game throughout the season. Walking 18 holes can be quite exhausting - as the course is set on mountainous terrain.



© Pfaff Marketing GmbH







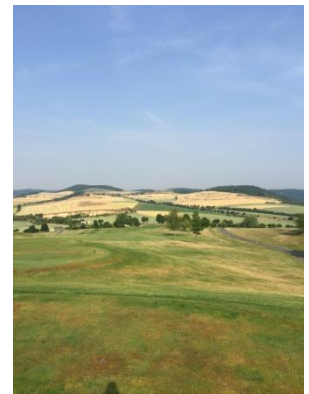
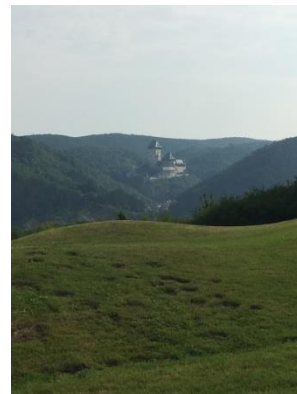
## Golf Course Karlštejn

The Karlštejn Golf Resort was opened in 1993, designed by two Canadian golf architects, **Les Furber** and **Jim Eremko**. These two architects have been responsible for more than 70 golf courses around the world. Two of the most famous golf courses they have designed and developed are "Valderama" in Spain and the "Varadero" in Cuba.

Karlštejn is one of the world's most unique courses. It is a careful, sensitive approach of integrating a golf course into a picturesque countryside, where the romantic scenery comprises of Karlštejn, one of the most famous of Czech castles and the residence of many Czech kings.

The hilly landscape contains limestone rocks, rich fauna and flora, making the golf course an oasis of calmness and peace that will gratify the most demanding players.

In 1997, the course had the honour of hosting the European Tour. A number of golf stars from all over the world took part in this tournament. The winner, Bernhard Langer, won with a score of 265 (-20) after four rounds. The record-holder is Swedish player Patrik Sjöland with 61 strokes in the second round of the Chemapol Trophy, which took place on August 8, 1997.







The 18-hole, par 72 Gut Altentann golf course is the first course designed by **Jack Nicklaus** on the European continent. According to Nicklaus, "It was a pleasure to design and build this course due to its beautiful and optimal environment which has enabled us to offer a high quality international golf course."

According to Nicklaus, this course is an accomplishment in golf architecture. As you discover this course, it is noticeable to see that he put all his passion, knowledge and his three unique design criteria's into the design and development of this course.



Historically the area surrounding the golf course is first mentioned in 785 AD. In the 17th century a castle was erected and after its unfortunate decay, due to financial problems, it finally burned down in 1680. At the exact location of where the castle once stood, now stands the clubhouse originally built in 1782.





# Liberty National GC

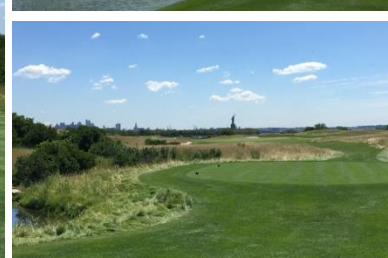
Proximity to NYC – 3 miles across the Hudson River



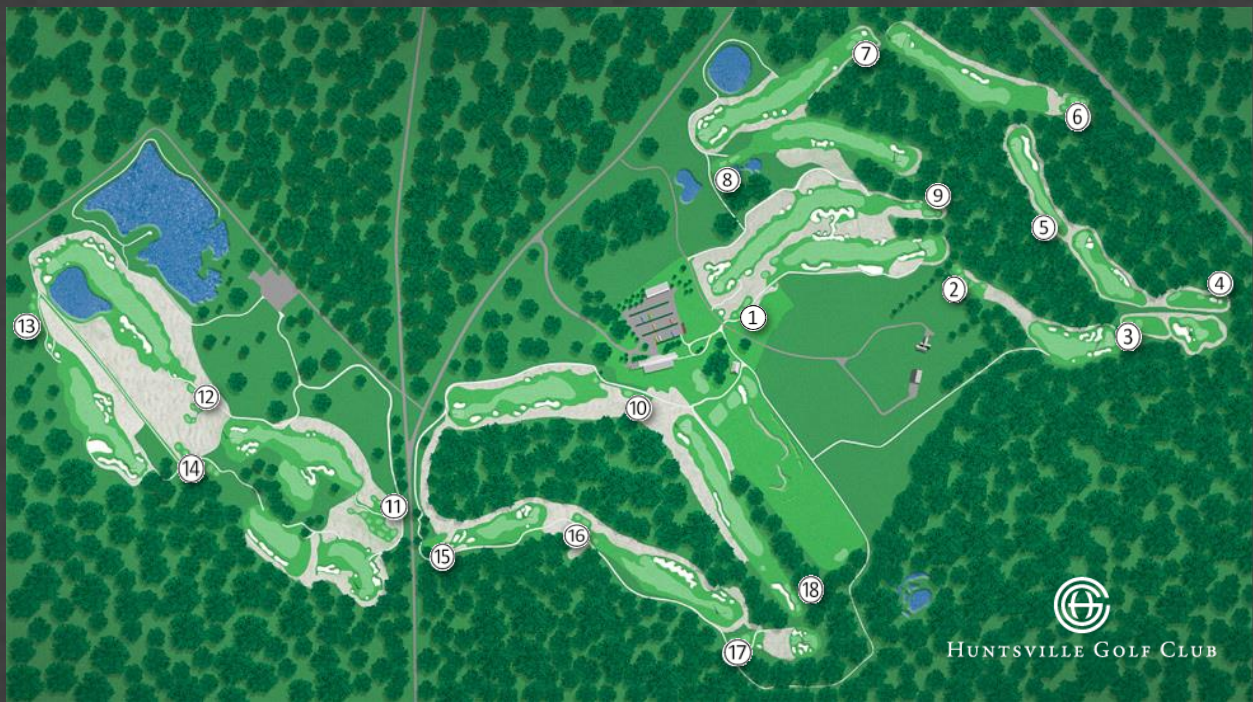
The first time you set foot on Liberty National Golf Club, the gravity of your surroundings cannot be ignored. To the east, the waters that ferried immigrants to these shores sparkle in the sun, the image of the Statue of Liberty signaling the promise of a new beginning.

To the west, the bucolic, rolling hills of the Garden State unfurl over what was part of the original 13 colonies. And beneath your feet, an oasis of golf that enhances the land upon which it sits, reflects the mission of its founders, and respects its role in a historic region.

The 18-hole Championship Golf Course that sits on this land reflects the detailed expertise of 1992 U.S. Open Champion **Tom Kite** and renowned golf course architect **Bob Cupp**, who collaborated on the design. Kite & Cupp's parkland links style layout of Liberty National is dramatic and yet traditional, taking into account the site's cultural heritage, aesthetic principles, and elements of light and shadow. Golfers enjoy magnificent views of the Statue of Liberty, the New York Harbor, Manhattan Skyline, and the Verrazano Narrows Bridge.







A prime example of **Rees Jones** at his very best, rolling terrain and scenic landscapes comprise the 473-acre site. Multiple tee positions and generous driving and landing areas reveal that Huntsville is a course ideally suited for all those who love the game. "What golfers will enjoy at Huntsville is the beauty of the site and the way that the holes fit the land so perfectly," says Rees Jones. "This course will reward excellent shot making, yet it will not overly penalize a poorly played shot."







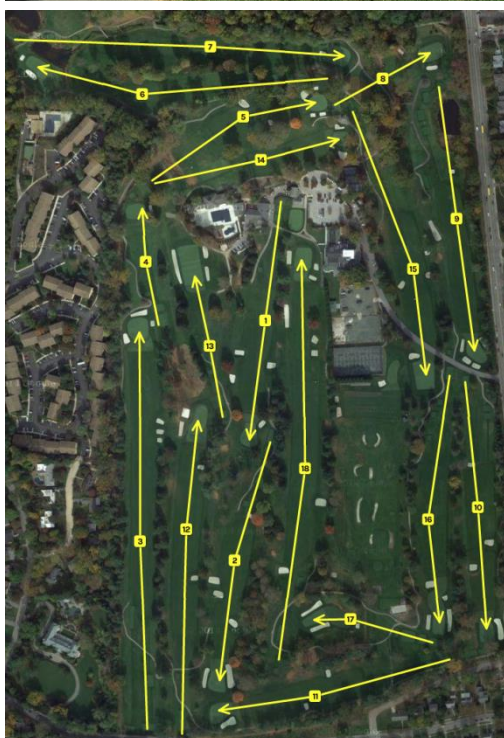
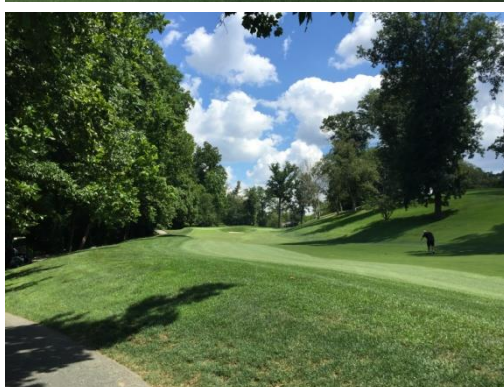
THE ELKRIDGE CLUB



The Elkridge Fox Hunting Club was founded in 1878 with about 40 members strictly as a fox hunting club. Then nearly twenty years later, a group of Baltimore gentlemen formed the Baltimore Golf Club and leased 29 acres just to the south of Elkridge. Here they built the first golf course in Maryland, nine holes between Elkridge and Gittings Avenue. Not to be outdone, the next year Elkridge built its own course of about 2,000 yards, fitting the nine holes in with baseball fields, horse schooling grounds and outbuildings. These two courses operated side by side for four years with many common members, and were often played as 18 holes. But after the 1898 season Baltimore Golf Club and Elkridge decided to combine. Certain Elkridge members acquired the 29 acres and leased it to Elkridge, which accepted as members all willing Baltimore Golf Clubbers. A new, much improved nine-hole course was opened in May 1900 over the land previously used for the two courses. Designed by Thomas Bendelow of New York and reaching about 2,800 yards, this new nine was very fine for its day. For the next 20 years the hunters and the golfers lived side by side. The golf course was closed for the annual horse shows, and the hunters tried to stay out of the way of the golfers.

By April of 1923 the membership had reached 400. A bigger golf course was needed. So Elkridge leased additional land and the now 100-acre Elkridge property extended from Lake Avenue north to the railroad line, which ran along the path between the present 5th and 6th holes.

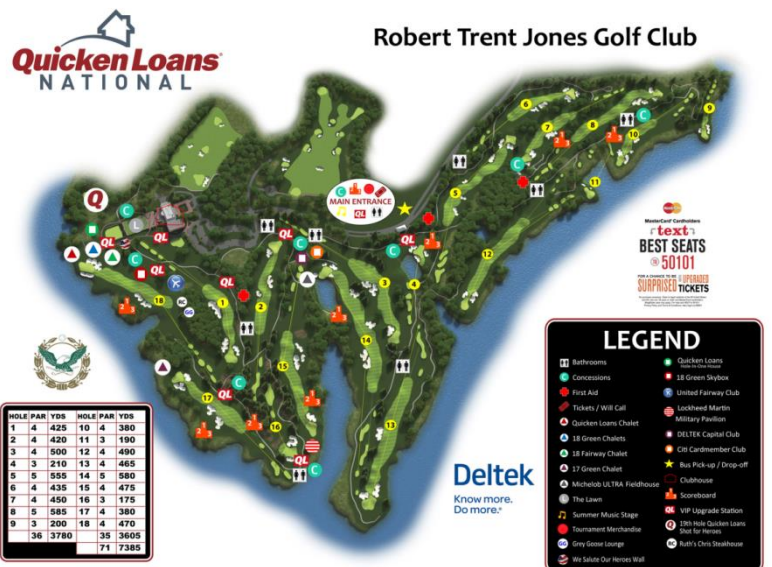
Golf expert **Seth Raynor**, with the help of Jimmy Roche, designed and built the 18-hole golf course, which opened on May 24, 1925. While there have been a number of changes to the course over the years, many of the original Raynor features have been restored. And the present first hole dates all the way back to 1900 and the original 9-hole course.







RTJ is a golf club in the truest sense -- there are no tennis courts, there's no pool, and the members are passionate about the game of golf and respectful of its traditions. Members' families are welcome, but only when the Member is at the Club -- there are no un-escorted minors. It's all part of the vision to create a unique environment for golf and camaraderie without distraction. It is elegant and at the same time relaxed. You feel the magnificence of the surroundings and yet you can unwind and enjoy uninterrupted time with friends.







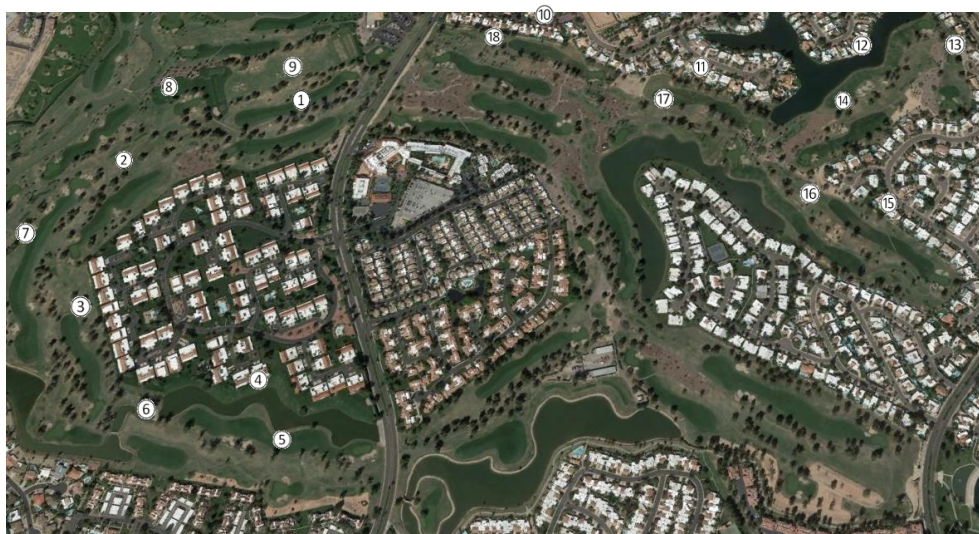
The Noordwijkse Golf Club is among the most beautiful courses in Europe, ranking second in all of Continental Europe. The combination of its layout near the North Sea shore, which gives it its links character, the remarkable views and architecture, makes this course very challenging. Elevated greens, blind shots, high rough and the never abating wind, together with demanding woodland holes make this course a real challenge for even the experienced golfer. The course, designed by **Frank Pennink**, has staged a host of tournaments, such as the Dutch Open and the National Open. In 2011, the club also hosted the Individual European Amateur Championships for ladies.







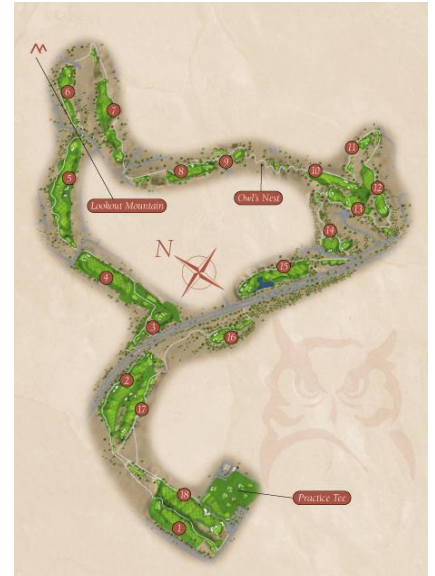
Located in the heart of Scottsdale, McCormick Ranch Golf Club features two unique courses that are tour tested and amateur approved. The Palm and Pine Courses have breathtaking views of Camelback and McDowell Mountain, and combine well-manicured resort golf course layouts with pockets of desert infusion. On the Pine Course, hitting the corridor fairways requires a mindful tee shot. Water comes into play on six holes, and local players will give you different tips how you should play coveted hole number 15. Course architect **Desmond Muirhead** nailed it in 1972 when he developed the “fine pine.” The Pine Course is continually selected by the PGA to host the regional qualifier for the Waste Management Phoenix Open.





The award-winning Lookout Mountain Golf Course sits among the magnificent North Phoenix Mountains and offers panoramic views of graceful Arizona landscape with lush greens that are entwined by carefully preserved Sonoran Desert Terrain. This championship 18-hole course combines spectacular scenery with challenging play. In fact, you may see quail or even a coyote out on the course.

This magnificent par-71 course has garnered many honors. Golf Digest has given it a Four Star Award for nine consecutive years and named it one of the 450 best public courses in the country, a Zagat rating as one of America's Top Courses from 2005 - 2009, a coveted ranking as one of the Top Ten Public/Resort Courses in Arizona for 2008 and 2009 via Arizona Business Magazine, and Lookout Mountain has been consistently voted one of the top 25 golf courses in the state of Arizona. The course has also hosted celebrity events such as the Arizona Baseball Charities Classic and the Phoenix Suns Scramble. The highly-praised Lookout Mountain Golf Club was designed by **Bill Johnston** and **Forrest Richardson**.

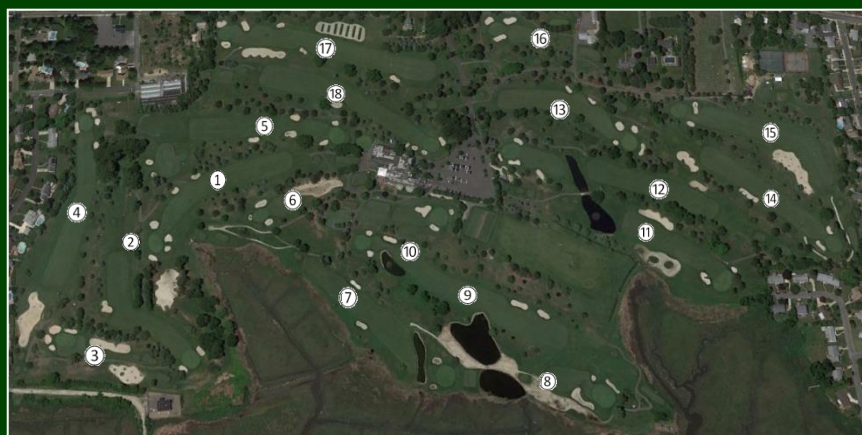






Originally designed by **Herbert Strong**, Linwood Country Club was officially opened, although clubhouse construction not complete, with a golf tournament on March 20, 1921 but the history after its grand opening has been clouded by the lack of in house written records, some of which were destroyed in a fire. After barely surviving the great depression, the club grew in membership with the return of World War II veterans and many of the improvements both to the clubhouse and golf course were accomplished during this era. In the 90's the course was completely redesigned again by

architects **Tony Lepre** and **Rob Salad** -- their mission included utilizing the unique seaside setting and spectacular vistas to create wonderful aesthetics. The addition of large waste bunkers with native grasses complements the natural marshes on which the course is situated. The goal for playability was and remains to provide members and their guests with a user-friendly yet challenging facility in which the beauty and wildlife of the Jersey shore may be enjoyed. The redesign included a lengthening of the championship tees and the creation of four sets of tees.







## PHILADELPHIA CRICKET CLUB – WISSAHICKON

Founded in 1854, The Philadelphia Cricket Club is the oldest country club in the United States. As the name indicates, the Club was formed by a group of young men of English ancestry who had played the game while students at the University of Pennsylvania. When the Golf Association of Philadelphia was organized in 1897, the Club was one of four founding members with Merion, Philadelphia Country Club and Aronimink. The original nine-hole course was built in 1895 by famed architect Willie Tucker and was quickly replaced by a new eighteen-hole course in 1897. The old eighteen-hole course, known as St. Martins and now playing as a pleasant nine-hole layout, hosted the United States Open Championship in 1907 and 1910. Because the Club did not own the grounds on which the St. Martins golf course was built, a large tract of land was purchased in 1920. It was **A. W. Tillinghast** who recommended the Flourtown site and who designed the new course, which opened in 1922.

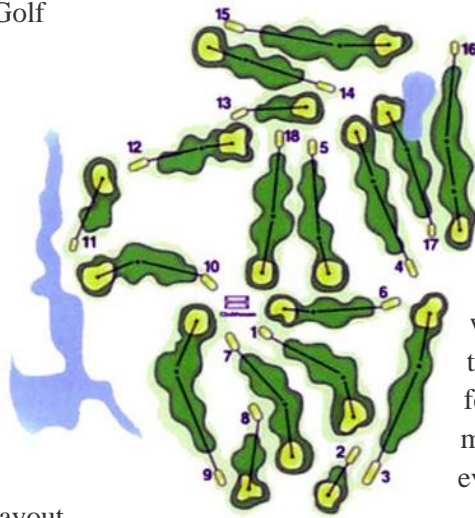
The Wissahickon course is one of the few remaining courses designed by Tillinghast that has had minimal changes over the past 80 years. The name "Wissahickon" comes from the Lenape word for "Catfish Stream." The Wissahickon Creek runs adjacent to the course. Lorraine Run, which eventually dumps into the Wissahickon Creek, runs through the Wissahickon Course. An abandoned Reading Railroad track runs through the course, along the 9th and 11th holes. Although the track was ripped up several years ago, the train bridge over Lorraine Run still stands. The Wissahickon Course has hosted several local tournaments.







Sharon Woods Golf Course is the oldest of the seven golf courses operated by Great Parks of Hamilton County. Opened by legendary golfer Bobby Jones in 1938, the course has stood the test of time and offers something for everyone. Sharon Woods is a par 70, playing to 6,633 yards from the back tees. With six sets of tees, players of all levels can enjoy the classic layout



designed by **William Diddle**. Built on rolling terrain, players will need every club in the bag. The par 4 #3 has often been referred to as the toughest hole in the city, and the par 3 #8 features a majestic view as your ball travels downhill to the waiting green. Known for being a tough test of golf, the layout features holes where birdies can be made, as well as holes that will test everything you have to make par.

