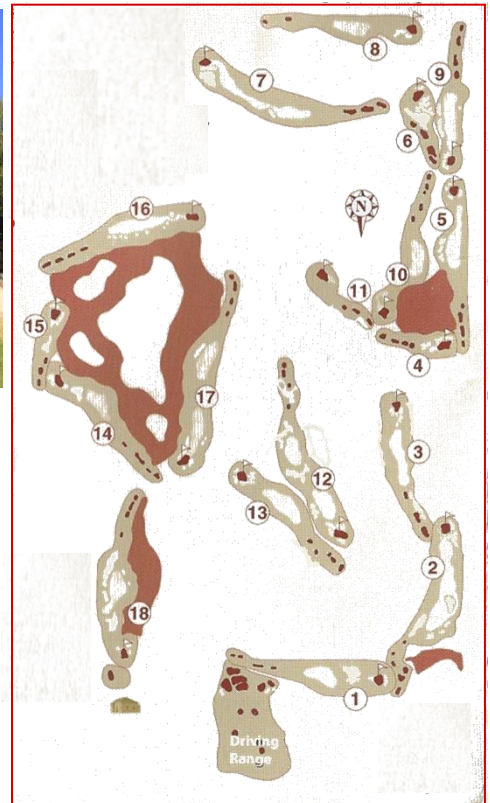




This semi-private country club is not just about the game — it's about "The Experience!" Nestled among 100-year-old oaks in the rolling hills of Lake County, this dynamically designed course simply promises the finest natural golf settings and scenic, panoramic views that Florida has to offer. Located in rural Sorrento (35-40 minutes north of Orlando and 15 minutes west of I-4), RedTail was designed by **Dave Harman** to test even the most accomplished player's shot-making ability. RedTail offers a challenge at every turn. Having played host to various NCAA and charity tournaments, RedTail is well-known as one of the finest natural golf settings Florida has to offer.





Golfing at the Boca Raton Resort and club is like immersing yourself in the rich history and tradition of one of the finest golf resorts in Florida. Dating back to the times when PGA professionals Sam Snead and Tommy Armour held positions on staff, this exclusive golf resort has always sought to offer a unique, exclusive and exceptional year-round golf experience.

The course is a tight and stunning par-71 playground that plays 6,253 yards from the back tees and features a variety of elevation changes and 12 surface acres of water -- including a signature water-feature designed by Hugh Hughes. The Resort Course is dedicated to Tommy Armour and Sam Snead who both served as golf professionals at the Resort from 1926 to 1955, and 1956 to 1969, respectively.

Today, the Boca Resort has undergone a golf metamorphosis. For many years, the course - designed by **William Flynn** in 1926 - was the oft-forgotten stepchild of the resort, a spectacular example of Roaring '20s Addison Mizner architecture. Now, after a \$6.5 million overhaul of its Resort Course by designer **Gene Bates**, golf is back at Boca.



BOCA RATON
RESORT & CLUB®

The first thing to consider is the amazing course routing job done on this small piece of *tres chic* real estate, located just a few three woods away from the Intracoastal Waterway. Locals have quipped that building this course "was like trying to squeeze a football field onto a matchbook cover." Thanks to the considerable mounding, lush foliage and perfectly positioned palm trees along the sides of many holes, you hardly ever notice: With only a few exceptions, you cannot see even a piece of more than one fairway from the tee.

But that all does not mean you can just come out here drivers blazing, for this course is the Fred Couples of Florida golf -- it's laid back and sneaky long.

The hidden length comes in the elevation changes throughout the golf course. Drives are played downhill into swales - so forget about the 75 extra yards of bounce that you get on the usual Florida resort course.

A cornerstone of beautiful Rancho Santa Margarita, the award-winning Tijeras Creek Golf Club is what Orange County golf should be: A beautiful escape from the hustle and bustle of everyday life. Located a short drive from John Wayne Airport, Tijeras Creek is considered one of the finest daily-fee courses in Southern California.

The distinctive **Ted Robinson**-design challenges players of all skill levels on the front side, highlighted by water coming into play in three out of the first nine holes. The back nine holes are a talking point in local golf circles, popular because of the awe-inspiring scenery and breathtaking elevation changes.

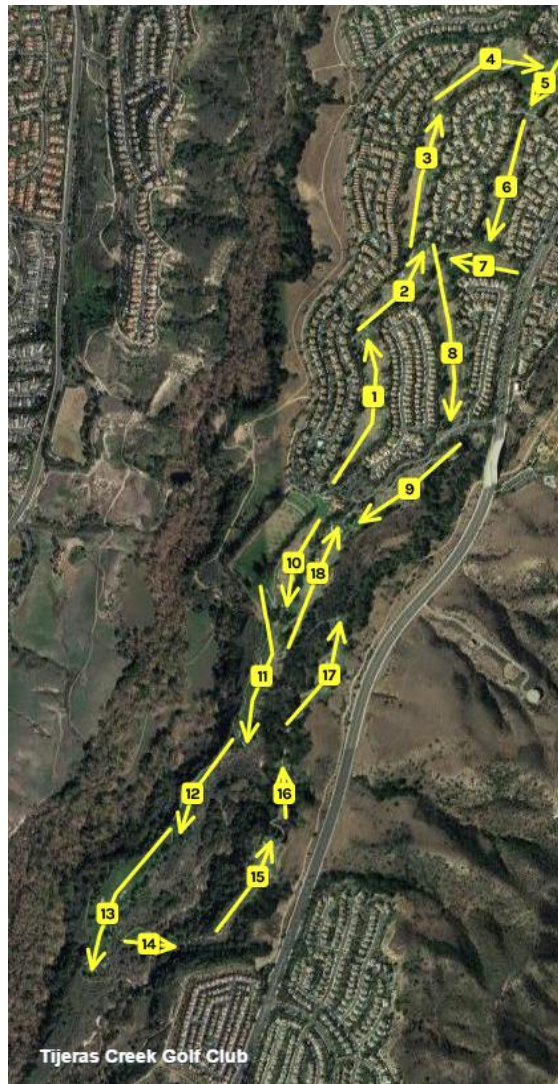
Located in the planned community of Rancho Santa Margarita, adjacent to the O'Neill Park open space area, Tijeras Creek has a private club vibe without the pretentiousness.



It's definitely a "tale of two nines" and that's not necessarily a bad thing. The front nine is fairly typical of a residential-development course, but the well-treed holes are interesting with a pretty good degree of privacy. The par threes on the front are highlights -- the 167-yard 5th which features a scary

shot over water to a narrow, uphill-sloping green and the 7th which requires a longer shot (again over water) of 225-yards from the back tee but does allow for a bail out on the right. That is of course if you don't mind taking bogey.

The back nine climbs you into and around native brush areas with views of the O'Neil Park and Saddleback Mountain as backdrops to several holes. The highlight is the 11th, a par-5 with an abyss of the aforementioned natural space guarding the right side and two bunkers seemingly guiding you to safety (trouble is there is only about 20 yards of fairway between them...). Overall a great and beautiful golf course.

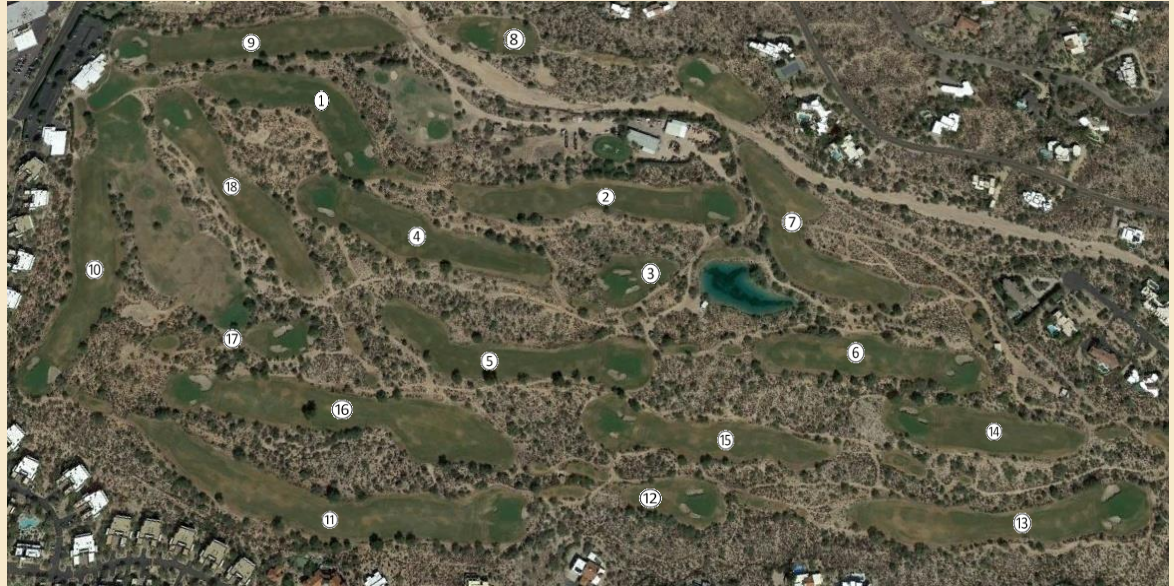




In 1962, architect **Robert "Red" Lawrence** carved Desert Forest from existing desert landscape, with virtually no soil having been removed or shaped during course construction. The environmentally "all natural" setting remains today the hallmark of the course, with desert characteristics proudly and beautifully displayed for the discerning eye to see and the dedicated golfer to appreciate. From virtually everywhere on the golf course, the Sonoran Desert vistas are breathtaking.

The Desert Forest story is about the game of golf and the bond that forms among golfers. The club was designed around a singular vision; not to serve an existing market for tourists or house hunters, but to create a home for serious golfers willing to travel far off the beaten path. To this day, that spirit endures. It is no coincidence that some of America's greatest modern golf courses are in beautiful but remote settings.

Desert Forest is an unpretentious club with a big heart. We are passionate about the condition of our golf course, the talent of our staff, the experiences of our members. The amenities we offer are polished and well-suited to our club: a wide range of exceptional golf services; a delightful patio; a very talented chef; a dining room and bar with the best view in the valley. ***And one of the most compelling golf courses in America***





The Golden Bear Club is a **Jack Nicklaus** Signature-designed course. Since its opening, it has become the centerpiece of the prestigious community of Keene's Pointe. This phenomenal private country club is bordered by the Butler Chain of Lakes and features majestic oaks, towering cypress trees, and all types of natural flora. The layout, always in impeccable playing condition, will test your mettle, challenge your skills, and reward your prowess. The club also features a massive, luxurious clubhouse facility offering panoramic views of both #9 and #18 finishing holes. An impressive way to experience a memorable round as a 'member for the day!'



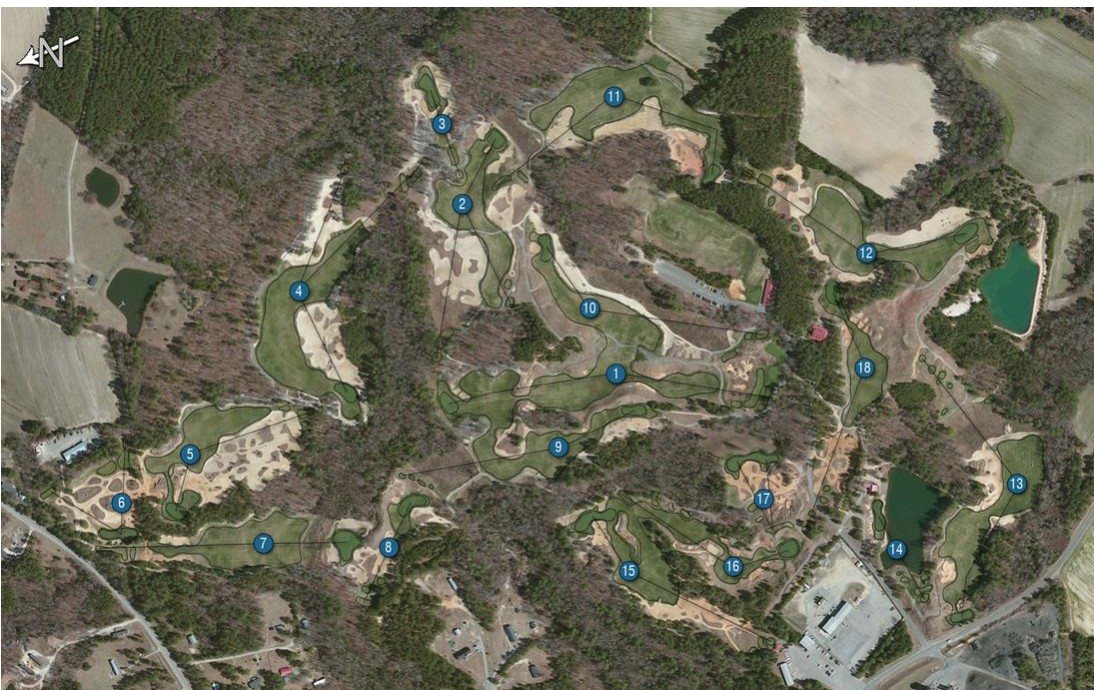


Tobacco Road Golf Club was built on land tended by the weather-worn hands of tobacco farmers, later shaped and moved through mining and sand excavation before finally being crafted and molded by an artist's imagination and the revolutionary eye of the late **Mike Strantz**. When Tobacco Road was little more than a walking path through an expended sand quarry, Strantz said he "knew immediately it could be something not only spectacular, but also unique."



Established in 1998, Tobacco Road is younger than many of the courses it has surpassed in its accumulation of accolades. Architect Mike Strantz was a student of the Golden Age Architects whose turn of the century designs set the standards while contributing to the development of the principles of golf course architecture and design. The seamless incorporation of Golden Age "conventional features," like the elegant arc of a fairway set against the contrast of a sandy waste area, with the bolder design features most often seen on the British Isles, are where Strantz showcased his true artistic talent.

Strantz found his canvas, not on the sea side cliffs of the British Isles but rather in the remnants of a sand quarry in the Sandhills of North Carolina. He allowed the rolling terrain to evolve into one of golf's most uncompromising designs. Beyond the panoramic views and stunning vistas lies a course that tests all of a player's faculties. Five sets of tees allow a player to undertake the course at a level worthy of their skill; however, one should always keep in mind – it was Strantz's goal to test "a player's eye, determination, and wits."





COURSES OF PINEHURST

No. 4

No. 4 combines the classical routing of **Donald Ross** with the contemporary vision of **Tom Fazio**, who re-imagined the course in 2000. Fazio tipped his hat to Ross with crowned greens on many holes, and the addition of more than 140 pot bunkers.

In 2017, Pinehurst Resort announced that Hanse Golf Design will redesign Pinehurst No. 4 as part of a master plan to further restore the original character and spirit to the Pinehurst golf experience. Hanse's design and routing, which seeks to create a landscape similar to Pinehurst No. 2, will include exposed sand and native wire grass, wider fairways and natural topography. Work on the project is scheduled to begin in fall 2017, with the course reopening in fall 2018.

"We think this approach will create a more authentic, visually interesting golf course and one that feels in tune with its unique surrounds," says Hanse.





COURSES OF PINEHURST

No. 2

Pinehurst No. 2, the centerpiece of Pinehurst Resort, remains one of the world's most celebrated golf courses. It has served as the site of more single golf championships than any course in America and hosted back-to-back U.S. Open and U.S. Women's Open Championships for the first time in 2014. The U.S. Open will return in 2024.

Opened in 1907, No. 2 was designed by **Donald Ross**, who called it "the fairest test of championship golf I have ever designed." Ross was associated with the course for nearly a half-century, improving the course continually until his death in 1948. No. 2 is best known for its crowned, undulating greens, which are some of the most complex and widely hailed in the world. Ross believed in providing golfers with strategic choices, and Pinehurst No. 2 was intended to epitomize that philosophy.





COURSES OF PINEHURST

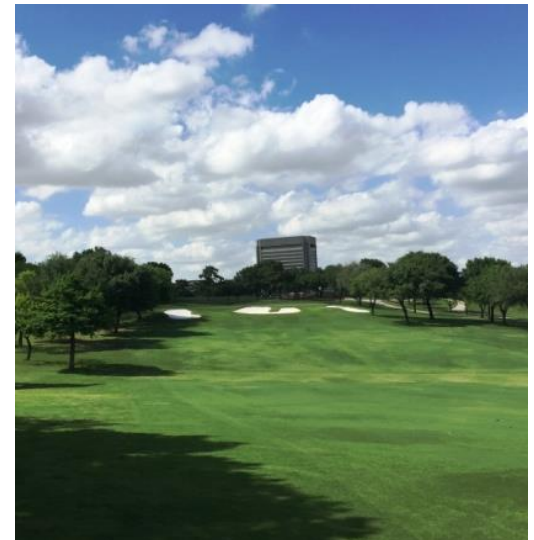
No. 8

Building a new course grand enough to celebrate Pinehurst's first 100 years might intimidate some architects, but **Tom Fazio** took on the assignment with gusto. No. 8 – which opened in 1996 – combines classic Donald Ross concepts with the whimsical snarls that have become Fazio's calling card.

Fazio took full advantage of the 420 acres of rolling terrain and natural wetlands to fashion a course that's visually enthralling and challenging yet fun to play; it's a nod to No. 2, but hardly a replication. Many feel No. 8 synthesizes all the elements of the Pinehurst golf experience into one layout.

This championship track has twice been home to the PGA Club Pro Championship. Just a short drive from the main club, the Pinehurst spirit is quite alive at No. 8, which will serve as the companion course for the 2019 Men's U.S. Amateur Championship.





Named one of the Best Country Clubs in DFW (Avid Golfer, 2015), Las Colinas Country Club offers a highly rated golf course, and has been host to a number of PGA and LPGA tournaments. The 18-hole golf course is truly a sight to behold—standing atop the No. 1 tee box, it seems as if the entire world is spread out before you, as a carpet of treetops and rooflines roll all the way down to the Dallas skyline. More than 40 years ago, the Club site was originally a ranch, known as El Ranchito de Las Colinas (The Little Ranch of the Hills), owned by Las Colinas founder Ben Carpenter. The area of Las Colinas was accentuated with acres of lush rolling hills, sparkling bodies of water and was home to thousands of head of cattle.

In 1963, Las Colinas Country Club was established and the golf course was designed on land selected by legendary designer **Joe Finger**. The carpet-like bent grass greens sit among the naturally rolling landscapes, mature growth of foliage and, just on its outskirts, the now familiar skyscrapers housing the vibrant corporations that epitomize today's Las Colinas community.

The Club was built as the cornerstone of what has become the thriving Las Colinas area – the prestigious, planned community is synonymous with corporate offices, luxury hotels, landmark office towers on shining lakes, gated enclaves of beautiful homes and urban lofts.





Designed in 1970 by **Dave Bennett** and consultant **Terry Dill**, Lost Creek Country Club offers Austin golf at its very best. The world-class par-72 championship Lost Creek golf course offers one of the most outstanding and challenging course layouts in the Austin. If the beautiful, picturesque hillsides surrounding this spectacular Austin golf course don't grab your attention, the narrow fairways definitely will.

Not only is Lost Creek one of the top golf courses in Austin, it is one of the most environmentally friendly Austin golf courses as well. The natural landscape surrounding the golf course is one of the only golf courses Barton Creek traverses as its waters travel to Barton Springs Pool. Lost Creek golf club is known for its natural palette unique to the Texas Hill Country.





Eagle's Landing Country Club is a challenging 27-hole **Tom Fazio** golf course which is ranked as one of the 10 best courses in Atlanta and once was a stop on the LPGA tour. The golf course is accented by the magnificent 51,000-square-foot clubhouse that exudes Southern charm and grandeur with its opulent chandeliers, tall, stately columns and elegant double staircase entry. This exceptional golf club, one of the finest private country clubs in the South, was developed in the late 1980s as a gathering place for like-minded people from around the region.



The story of Eagle's Landing Country Club begins with a generous gift of natural beauty. Here forests, streams and wildlife intermingle with 27 holes of Tom Fazio-designed golf at its finest. Whether you are looking for a casual round of golf or are a competitive player, there may be many Atlanta golf courses but Eagle's Landing surpasses them all.



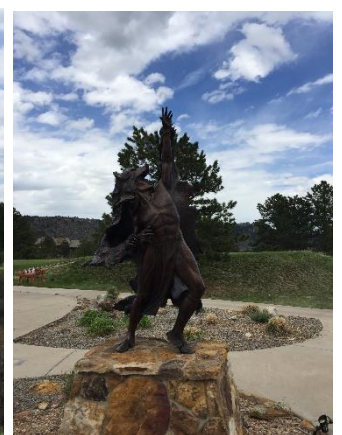
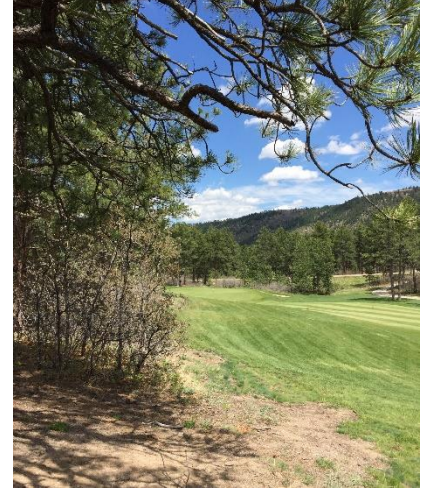
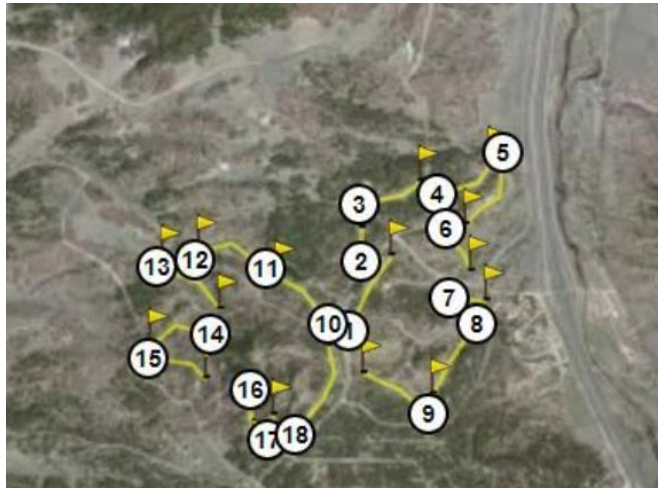


Established in 1916, Doylestown Country Club is the oldest private club in Bucks County, Pennsylvania.

The first nine holes or “Doylestown nine” were designed by William S. Flynn. This was at the start of what would become a brilliant career, though Flynn had, of course, already worked as an assistant to Hugh Wilson in the construction of Merion East and West. In the same year that he laid out Doylestown, 1916, Flynn also designed the Country Club of Harrisburg eighteen. The Doylestown nine was particularly notable for the natural siting of its greens and the well-considered bunkering of them. In the early days, sheep grazed on the fairways and, on those occasions when it was necessary, the grass was cut by horse-drawn mowers.

For 50 years the nine-hole course served the Doylestown membership well. But in 1966 the club would acquire 55 acres and expand the course to 18 holes. Happily, a number of the original holes—today’s 4th, 5th, 6th, 7th, 10th, and 18th—would be retained. Today the course combines hilly terrain with strategically placed sand bunkers and water hazards to challenge players of all skill levels.





BEAR DANCE

Bear Dance, the home course of The Colorado Section of the Professional Golfers' Association of America, is 18 holes of pure championship golf that meanders through 753 acres of mountainous terrain with mature Ponderosa Pines, oak-lined ridges, draws and native grass valleys. With an average elevation of 6,800 feet, The Golf Club at Bear Dance offers stunning views of the Front Range and surrounding landscape of The Rocky Mountains. Consistently rated as Colorado's best and most challenging public golf course, Bear

Dance offers generous tree-lined fairways framed by flashing white sand bunkers, striking water features, and intricate greens. Designed by three local architects, **Corey Aurand, Stuart Bruening, and Dennis Hogan**, who were all instrumental in getting the course to open, Bear Dance has since been awarded the 2014, 2015 & 2016 #1 Course along the Front Range, Bear Dance was chosen for its tranquility and natural splendor, a true mountain golf experience.

JACK NICKLAUS SIGNATURE DESIGN


Trump Golf Links
FERRY POINT

FRAMED BY THE MANHATTAN SKYLINE

Trump Golf Links at Ferry Point has an 18-hole, **Jack Nicklaus** Signature Design, links-style golf course. Sitting at the foot of the Whitestone Bridge in the Bronx, it is designed specifically to take advantage of dramatic and spectacular views of the Manhattan skyline, East River, and Whitestone & Throgs Neck Bridges. The course is truly a piece of art, handcrafted at every angle and exceeds the vision that was outlined by not only Donald Trump, but by Jack Nicklaus, the City of New York and every golfer that has visited the property since it has grown in.

The rolling mounds of fescue bordering 7,407 yards of pristine tees, fairways & greens create a golf experience unlike any other. It is the only tournament-quality course in New York City, giving avid golfers a unique and more challenging alternative to other courses in the area. On property, you will experience not only an incredible course, but world-class hospitality and amazing views everywhere you turn.



2015, Best New Courses

2017, America's 100 Greatest Public Courses

2015, Magazine Top 10 Municipal Courses in the U.S.

2016, The Dream 18 - Best Holes of Public Golf Courses (Hole #16)





The Golf Club at Ballantyne

- Year-round resort golf course ranked as the top public course in the Charlotte area
- 18-hole Championship, Par 71 | 6,740 Yardage | 132 Slope | 71.7 Rating
- **Architect Land Design, LLC, Opened 1997**
- Fairways and Greens – Hybrid Bermuda
- Best Places to Play with 4.5 Stars *by Golf Digest*
- Ranked in 10Best by USA Today in North Carolina
- The only true resort course in Charlotte and you get what you pay for
- Audubon-Certified Golf Course
- Champion Ultra Dwarf Greens Offer Exceptional Year-Round Playability





Golf as it was meant to be...

Bandon Dunes is true to the spirit of Scotland's ancient links.

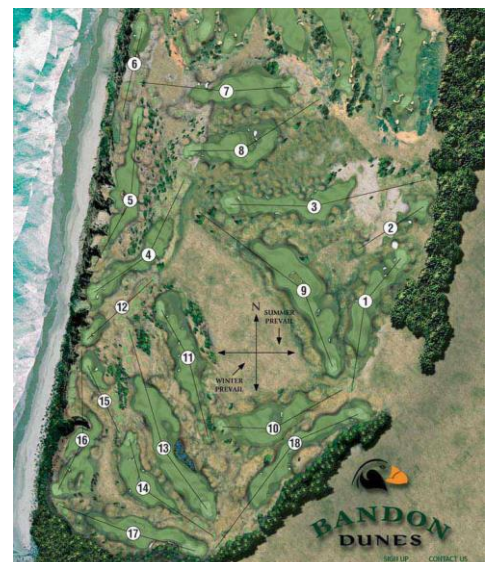
Here, players immerse themselves in the traditions of a timeless game and the grandeur of Oregon's rugged coast. Sweeping, untamed shores stretch for miles. Primeval grassy dunes roll to the sea.

Five distinctly different courses have been conceived in harmony with the natural environment. They combine with all the essential elements to reveal a new golf experience every time you play. The soul of the game resides here. Players walk. And at the end of the day, gracious hospitality comforts each guest like a warm, friendly embrace.

This is Bandon Dunes. This is golf as it was meant to be.

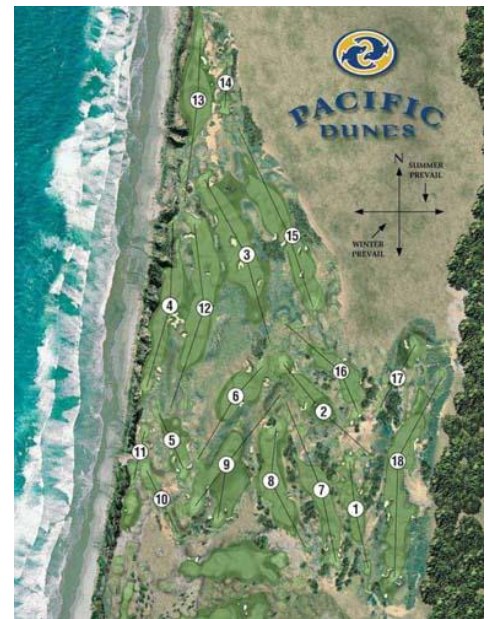


It began in 1999 with the opening of Bandon Dunes. Designed by Scotsman **David McLay Kidd**, the course is perched on a bluff high above the Pacific Ocean. Bandon Dunes unfolds along pristine native dunes where expansive ocean views are revealed on nearly every hole. The course is completely natural and routed through an environment of indigenous vegetation. Beyond breathtaking scenery lies the game of golf in its truest form. This is a thinker's course. Winds are ever-present, and the varying elements create a new experience each time you play.

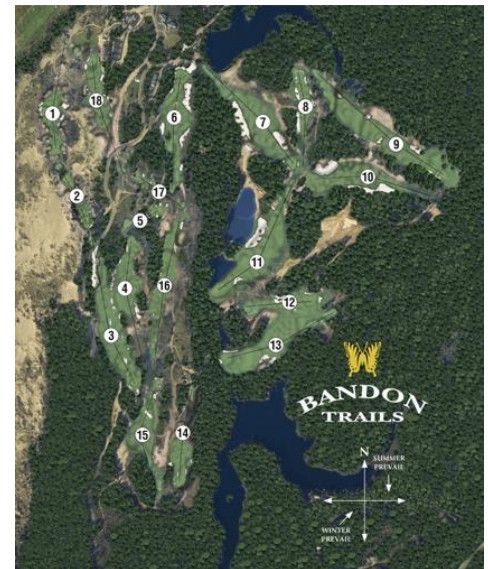




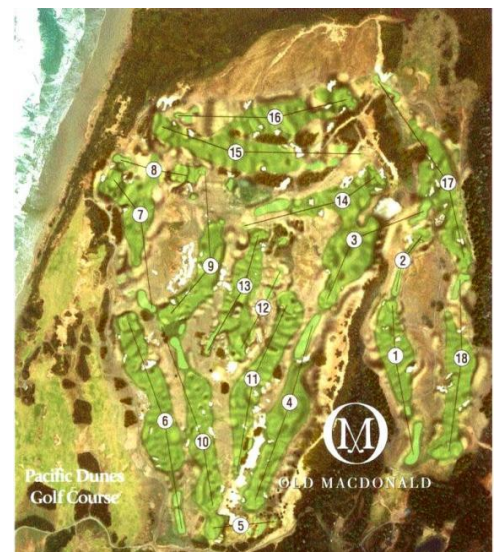
Designed by **Tom Doak** and opened in 2001, Pacific Dunes is remarkably different in character and shot making requirements than the other Bandon courses. Pacific Dunes doesn't feel like it was built as much as it was discovered. Rippling fairways remain just as they were found and natural bunkers line the landscape as they have for centuries. The course emerges from shore pines to spectacular 60-foot sand dunes. When the wind blows, precise approach shots are a necessity. Pacific Dunes is short enough to give you hope, but rugged enough to test every facet of your game.



When **Bill Coore** and **Ben Crenshaw** began working in the sand to uncover Bandon's third course, they faced the challenge of following Bandon Dunes and Pacific Dunes. Opened in 2005, Bandon Trails begins atop a massive sand dune, then quickly opens into a sprawling meadow. The routing then works higher into the coastal forest, before finally returning to finish in the dunes. The course is enjoyable to walk and is a constant reminder of how the game was originally created among inland rolling dunes with dramatic ocean vistas.



The fourth course at Bandon Dunes pays homage to golf course architect Charles Blair Macdonald by asking one simple question: What would Macdonald have created had the Oregon Coast been his canvas? Inspired by Macdonald's iconic work, course architects **Tom Doak** and **Jim Urbina** crafted a course that seeks the answer upon vast greens, among myriad angles of play, and from the depths of fierce bunkers. By celebrating these classic concepts of design, we honor the traditions of this game we love.





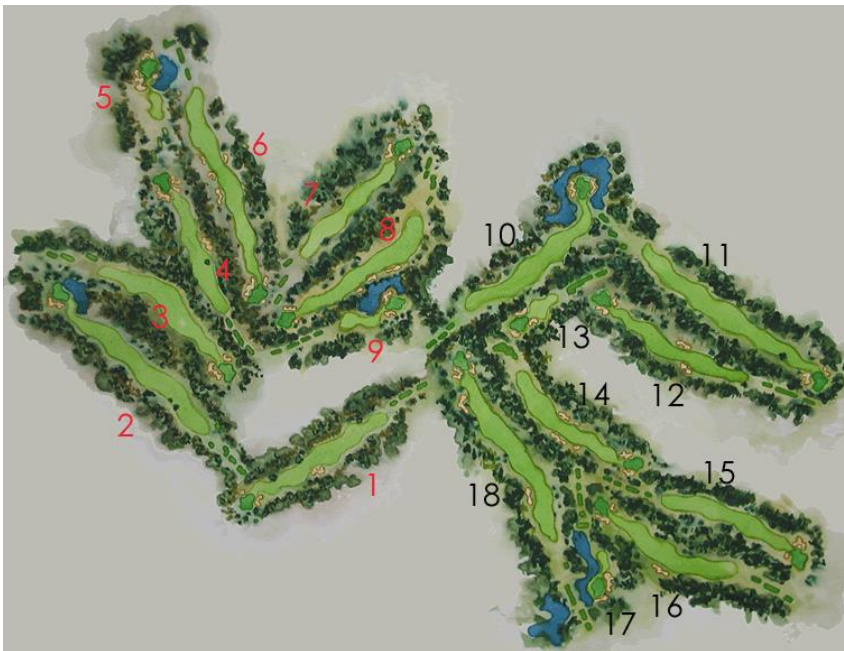




SAHALEE COUNTRY CLUB



If you love golf courses cut through dense trees then you'll find heaven at Sahalee outside of Seattle. The tight **Ted Robinson** 1969 design is carved through the towering Red Cedar, Douglas Fir, and other evergreen trees and strikes fear into anyone that suffers from claustrophobia on a golf course. While the numerous bunkers and handful of water features bring defense to the course, it is the looming trees that create the most havoc. In fact, Colin Montgomerie had this to say about Sahalee, "From above, I'm sure it looks like you can only walk single-file down the fairways." However, the dense forestation between each hole and gently rolling terrain create a peaceful, isolated feeling that is difficult to find at most courses. The course consistently ranks among the various Top 100 rankings. Host of the 1998 PGA Championship, 2002 World Golf Championship-NEC Invitational, and the 2010 Senior U.S. Open, Sahalee provides a unique test of golf that isn't found on any PGA Tour stops or other major championship host sites.





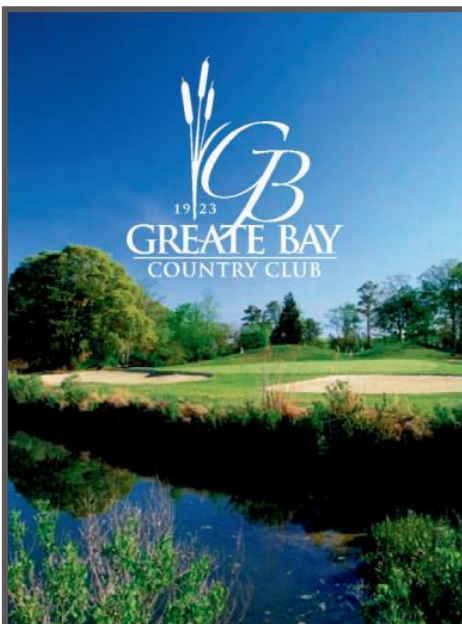
The par-70, 7,008-yard **A. W. Tillinghast** design – often called "Tillie's Treasure" – is frequently mentioned when accomplished golfers are asked to name the best course in the Metropolitan New York area. In March 1989, for example, Quaker Ridge was voted the number one course in the Met Area by The Met Golfer magazine. The course is also highly regarded on both national and international levels. In its 2017 rankings, Golf Digest rated Quaker Ridge #76 in the United States.

It all started with an original nine-hole layout in 1916 designed by John Duncan Dunn. A.W. Tillinghast was brought in during the 1920s to redo the course and expand it to eighteen holes. The course was rebunkered, and some other minor alterations were made by Rees Jones before the 1997 Walker Cup matches, which were held here. Gil Hanse made more modifications in 2013 and helped bring the course back to its place in the national rankings.

The defining characteristics of Quaker Ridge are the trees, the out of

bounds and the greens. The greens are very good, subtle and very fast; sixteen of them slope back to front. The course is in many ways a typical course found in Westchester County, which are all tree-lined. This is meant in no way to be a negative, because Quaker Ridge can hardly be described as a typical course. The other thing you notice about Quaker Ridge when you begin playing is that the angles you take coming into the greens are of paramount importance. This is the sign of a brilliantly designed and thoughtfully laid out course.



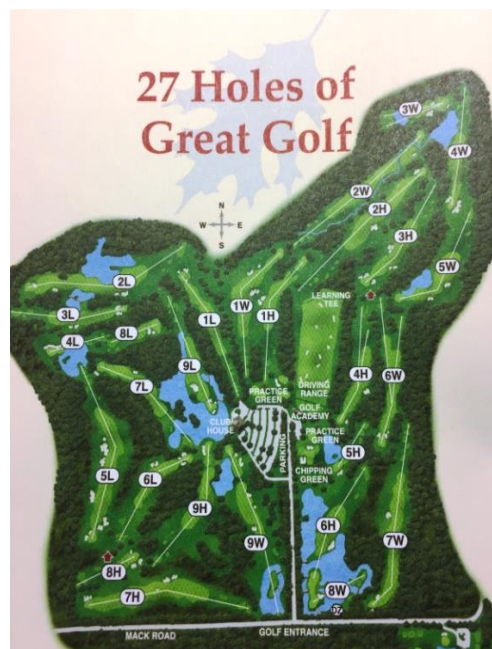


While Donald Ross was originally hired to design what was then to be named Ocean City Country Club, it was **Willie Park, Jr.** that is credited with the design of the course that would become Greate Bay.

The course has undergone several facelifts. First in 1972 by Tom Fazio and again when the Sands purchased the course in 1981. The Sands made significant renovations, leveled the old clubhouse and built a new one, upgraded the course, changed a few holes around (The fairways, bunkers, greens and sand traps remained basically the same, only then numbers changed. The old 18th became the 17th, the old 10 became #1), put in a driving range, built condos around the course and changed the name to Greate Bay Country Club.

It was under the stewardship of prolific amateur golfer Mr. Gene Gatti when the club served as host to the ShopRite LPGA Classic tournament from 1988 to 1997.

In 1998 Gatti sold the club to Archie Struthers, who began working in golf as a caddy at Pine Valley. Struthers renovated the course in an effort to recreate some of Willie Park Jr.'s original design ideas, yet maintain the course's championship qualities. Struthers also took the course private again, and went on to design and build his dream course – Twisted Dune, which is recognized for its unique, one of a kind attributes.



Cantigny Golf offers 27-holes of championship golf. It is comprised of the *Woodside*, *Lakeside* and *Hillside* courses. Together the courses create three unique golf experiences. Cantigny has been host to the 2007 U.S. Amateur Public Links, the 1998 and 2002 Illinois Amateur Championship and numerous USGA qualifiers.

The course was designed by **Roger Packard** and was updated by Jacobson Golf Course Design. It sits on the former estate of Colonel Robert R. McCormick. McCormick was the

long-time editor and publisher of the Chicago Tribune and played a major role in American journalism during the first half of the 20th century. McCormick inherited the land known as Red Oaks Farm from his mother, a member of the Medill family. McCormick renamed the estate Cantigny (Can-tee'-nee) in recognition of the small French village which was the site of the first American victory during World War I where McCormick served with the First Infantry Division (the Big Red One).

CANTIGNY
GOLF



The award-winning Ballyowen Golf Club was designed by **Roger Rulewich**, the longtime lead design associate for Hall of Fame designer Robert Trent Jones Sr. Rulewich applied all of the design knowledge he acquired from Trent Jones Sr. to create a modern day classic with links-style features that are spread out over 250 acres atop a plateau, and highlighted by 360-degree views overlooking the spirited Walkill River.

Ballyowen's fescue lined golf holes meander through open meadows and rolling farmland creating a feel of an inland Heathland style course of Ireland. The Celtic atmosphere transitions over to the clubhouse's Owen's Pub, where golfers are entertained by the serenade of the bagpiper every evening.



WINGED FOOT GOLF CLUB



Winged Foot West is on the short list of the best design jobs in the history of golf course architecture. Though the property could be described as downright ordinary with little topographical character, Winged Foot West is one strong golf hole after another with almost no let-up.

Gone are all the Norway Spruce that once squeezed every fairway of Winged Foot West. It's now gloriously open and playable, at least until one reaches the putting surfaces, perhaps the finest set of green contours the versatile architect



A.W. Tillinghast ever did, soon to be restored to original parameters by architect Gil Hanse. The greens look like giant mushrooms, curled and slumped around the edges, proving that as a course architect, Tillinghast was not a fun guy. Winged Foot West will host the 2020 U.S. Open.

The West is currently ranked #10 in the US and #14 in the world and is steeped in history having hosted the US Open five times and the PGA Championship once among other LPGA and Champions Tour events.

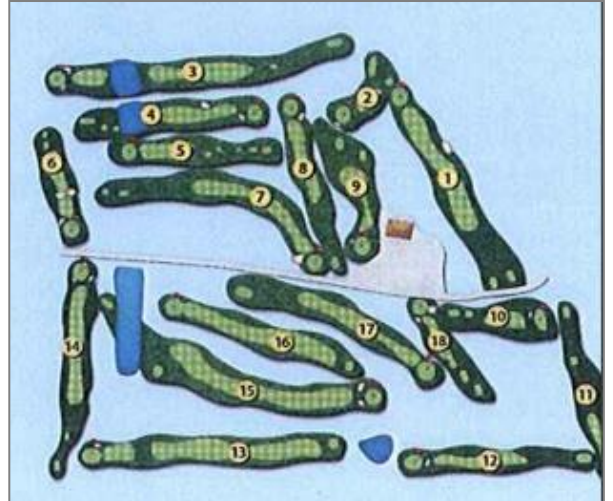


MOUNTAIN VIEW

COUNTRY CLUB

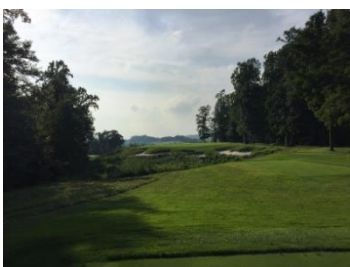
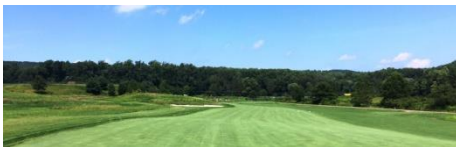
Mountain View Country Club offers some of the best greens and superb playing surfaces in the heart of Central Pennsylvania. The Public country club offers the service and quality golf experience you would expect only to find at a private club.

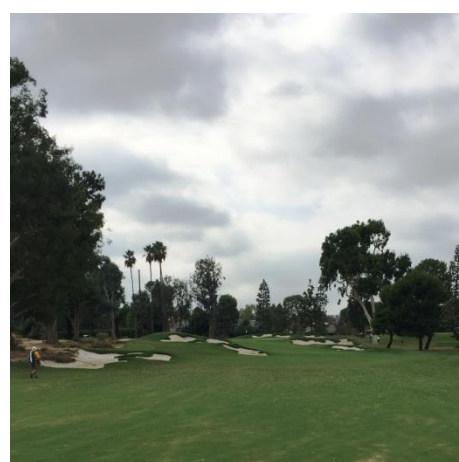
Nestled among the hills, offering panoramic views of Mt. Nittany and Tussey Mountain, you'll see for yourself why this is one of the best courses in the area. Built in 1963 and designed by **Lowell Erdman**, the golf course was operated as the Elks Country Club until the spring of 2012, when new ownership revitalized the facility by upgrading both the golf experience and the Club House. Over the years, the Country Club has hosted hundreds of Golf Tournaments and Outings.





The 18-hole championship golf course of French Creek Golf Club is a stunning example of the world class design of architect **Gil Hanse**. The golf course encompasses 230 scenic acres and plays only 13,000 rounds per year which allows easy access to the golf course, no tee times and a quick pace of play.



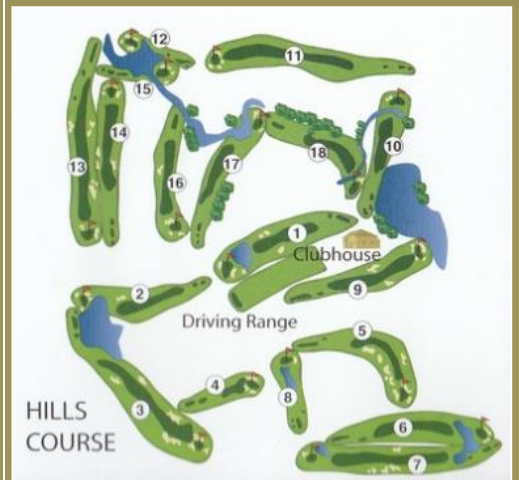


Founded in 1919 and set in the historic Hancock Park area of Los Angeles, Wilshire Country Club was designed by **Norman Macbeth** as a links golf course with a natural stream running throughout, giving the course its unmistakable character and challenge. Wilshire has hosted many great tournaments and groups such as the LA Open, the Senior PGA and the LPGA. The course remains a wonderful testament to great course design and remains one of Southern California's golf gems.

The club has enjoyed a rich history as an integral part of the City of Los Angeles. Located in the heart of the Hollywood area, its golf and social membership have long included some of the area's most distinguished business leaders and citizens. Nearing its 100th Anniversary in 2019, the club has played a prominent role in the development of the prestigious Hancock Park neighborhood where it proudly originated.



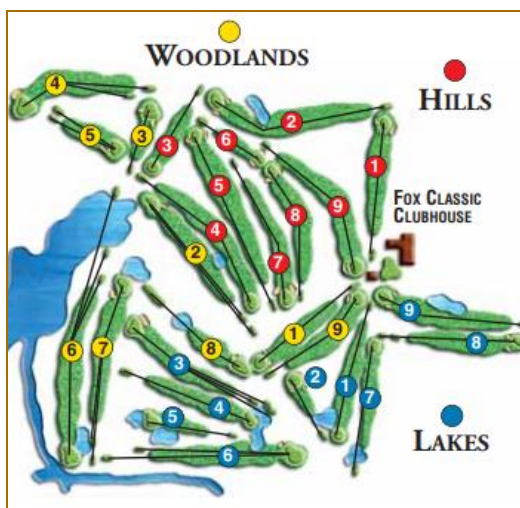
Named one of the Best Country Clubs in DFW (Avid Golfer, 2016), Prestonwood Country Club offers two 18-hole golf courses – one in North Dallas and the other in Plano. The championship Hills course in Plano was designed by **Dave Bennett** of Austin. This course offers members one of the most exciting golfing challenges today with rolling hills, crystal waterscapes and a profusion of natural foliage. The Hills Course was built almost 20 years after the Clubs of Prestonwood opened and is a more forgiving links-style design with wide fairways and large greens versus the original creek course. Notable features include pot and grass bunkers, as well as tough, undulating greens. The feature hole on the Hills is the 217-yard No. 4.





Fox Hills Golf & Banquet Center is an upscale golf and event destination, nestled in the beautiful countryside of Plymouth, Michigan. As you arrive on the 500 acres of lush scenery, you will soak in the splendor of all 63 holes of golf complete with breathtaking views. The resort has been recognized as one of the top public golf courses in Michigan, winning countless awards over the past 40 years. There are 3 pristine and diverse golf courses: The Golden Fox, 27-hole Fox Classic and Strategic Fox Courses.

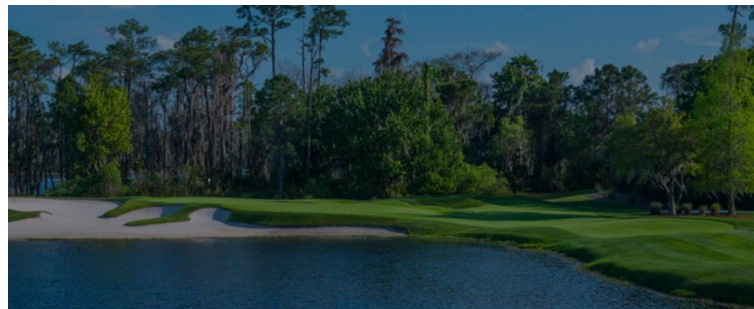
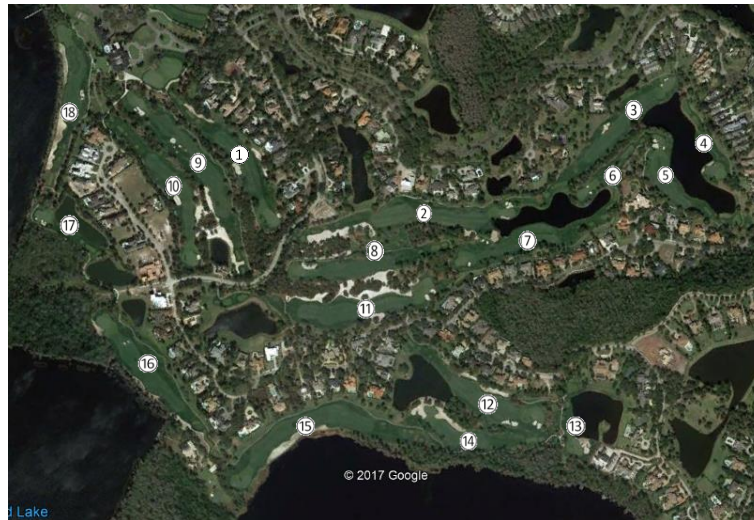
Fox Classic provides a fine example of traditional country club golf course design. The gently rolling hills, mature trees and small greens make it a classic treasure. Recent renovations perfectly blend modern course design enhancements with the character and tradition of the original layout. The original 18-hole course, designed by **Wilfred Reid**, was built in 1927 as the Plymouth Country Club. An additional 9 holes, designed by **Jim Lipe**, was constructed in 1982 to complete the 27-hole layout. The three nines are known as the Hills, the Woodlands, and the Lakes. The clubhouse features Fox Hills' original log-cabin clubhouse, dating back to 1927. The Clubhouse was renovated in 2008 and has warm inviting interiors keeping of that log cabin charm.





A Champion's Course

From the secluded, wooded canopy of the front nine to the breathtaking lake vistas along the back, Lake Nona's 18-hole championship golf course embodies the purity of the world's greatest game. Designed by premier golf architect **Tom Fazio**, the challenging course is favored by countless professional golfers and world-class athletes who call Lake Nona home.





Iron Valley Golf Club opened in the spring of 2000 and lies on a large 352 acre tract of land that has historical significance dating back to the late 1700's. The golf course was designed by the world renowned architect, **P.B. Dye**, and offers natural terrain, expansive vistas, and extreme elevation changes. Iron Valley Golf Club provides a genuinely great test of golf.

Iron Valley benefits from the interesting and diverse land it occupies. The name is a tribute to the iron ore mining that went on in the area. The course is built around some former mining features to great effect. The front is dubbed the Mine Nine; the back is called the Tailings Nine. Tailing, the rock that is broken up during the mining process, was deposited where the back nine was built.

The front nine plays up, down and around the Rexmont Mountain. The first hole is an indication that Iron Valley will test even the best golfers. It's a long par 4 that drops dramatically toward the hole and is an unusually demanding hole for an opener.

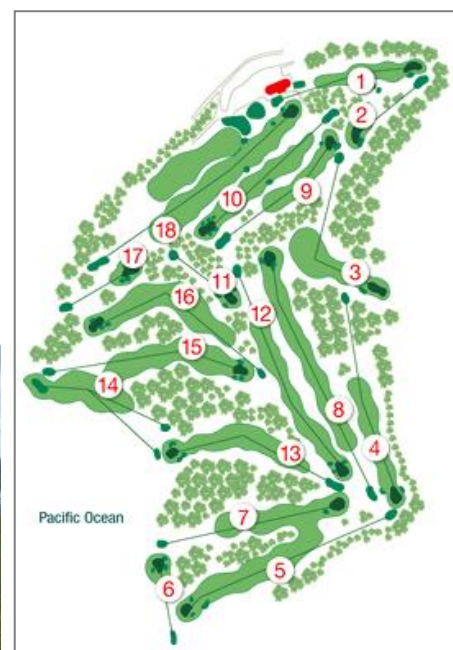
Most of the back nine is links style golf, with the holes placed on an unusual barren landscape. All but two play through a bowl-like depression and around a large lake that is a primary feature on two of the best holes on the back.

Ranked the #8 course you can play in Pennsylvania by Golf Magazine. A genuine P.B. Dye Masterpiece!



During his whirlwind 1926 Australian tour, legendary designer **Dr. Alister MacKenzie** visited La Perouse and was enthused about the potential for building a great golf course. Clearly moved by the surroundings he declared that New South Wales would 'present more spectacular views than any other golf course in the world, with the possible exception of Cypress Point.' Today golfers continue to make the pilgrimage to this sacred site to tackle a course built by nature, framed by the Pacific Ocean and shaped by the greatest hand of all.

NSW is a wonderful combination of undulating fairways, beautiful scenic vistas and a spectacular Clubhouse which is a magnificent combination of traditional architecture and five star comfort. Shortly after its 1928 opening, an edition of 'Golf in Australia' magazine described New South Wales as needing 'only the improving hand of time to become the acme of perfection'. The hand of time has indeed improved this masterpiece and though it is unlikely any course is the absolute 'acme of perfection', New South Wales Golf Club gets about as close as any in Australia.





Royal Melbourne is widely recognized as one of the leading golf clubs in Australia with two of the pre-eminent golf courses in the world.

The Club was founded in 1891 and has been host to numerous national and international tournaments. It has a proud reputation of providing Members and guests with a friendly, welcoming and inclusive experience. The courses are maintained consistent with the principles espoused by **Dr Alister MacKenzie**. The generous fairways and fast and firm conditions provide good challenges for both low and high handicap players.

Royal Melbourne's West Course was ranked No. 1 in Australia and No. 6 in the world by Golf Digest in 2016. Highlights include bold bunkering while the rough areas

around the tees and bunkers are a mix of native grasses which naturally frame each hole, providing great definition and contrast. The greens are brilliant and for decades have consistently provided the finest putting surfaces in Australia. They are large and beautifully contoured they are built to accommodate approaches from a number of angles with each progressively more difficult the further the tee shot strays from the perfect line.

Alister MacKenzie's 1926 routing fits snugly into the contours of the rolling sandbelt land. His greens are miniature versions of the surrounding topography. His crisp bunkering, with vertical edges a foot or more tall, chew into fairways and putting surfaces. Most holes dogleg, so distance means nothing and angle into the pin is everything.





Golf at Cape Kidnappers

Designed by legendary golf architect **Tom Doak**, the Cape Kidnappers par 71 golf course measures 7,119 yards (6,510 meters) and will challenge golfers of all skill levels. Completed in 2004, this spectacular New Zealand golf course has been hailed as one of the great modern marvels in golf. Built on a ridge-and-valley landscape and with stunning sea views, Cape Kidnappers Golf Course plays high above the ocean atop dramatic cliffs.

With cliff-edge fairways perched 140 metres above sea level and with surface that remains firm and fast, this course offers holes unlike anything you'll find elsewhere in the world. While every hole has a spectacular view of the bay, some play cautiously alongside deep ravines as others intimidate golfers with deep cliff top bunkers and sheer drops off the very edge of the earth.