



THE PALMER



Named after its designer, **Arnold Palmer**, this course is one of the more forgiving at PGA National Resort from tee to fairway, known as a risk/reward game. The open fairways and larger "Champion Bermuda" greens can be quite accommodating and invite players to take a chance if they dare – as golfers are not overly penalized for missing the fairway or primary rough on most holes here. There is a considerable amount of undulation through the fairway, presenting the opportunity for uneven lies and creative shot-making. The Palmer has a great series of finishing holes, with the 18th being one of the most scenic par 5s on the property.



THE CHAMPION



Originally designed by **Tom and George Fazio** for major tournament play, The Champion course at PGA National Resort & Spa was redesigned by **Jack Nicklaus** in 2014 and hosts the Honda Classic each spring on the PGA TOUR. Although The Champion has generous landing areas and spacious and accepting TifEagle greens, golfers are presented with course management challenges throughout the round.

A must-play on any avid golfer's list, The Champion features the Bear Trap, which spans three demanding holes designed by Jack Nicklaus. *USA Today* calls the Bear Trap "one of the toughest stretches in golf."



THE FAZIO



PGA National Resort is proud to present the new Fazio course. The Fazio is a reinvention of The Haig, PGA National Resort & Spa's original 18-hole course that opened in 1980. The Haig was designed by **George and Tom Fazio** in tribute to five-time PGA champion Walter Hagen, and its renovation is being led by third-generation designer **Tom Fazio II**, who emphasized modernizing the course layout. While the original par-72 routing remains intact, the renovation improves the classic golf architecture with modern advances. **Fazio II** himself believes his renovation "[achieves] that ideal balance where single-digit golfers will be fully challenged while higher handicaps will have a layout ideal for a day of enjoyable resort golf."



THE PALMER



THE CHAMPIONSHIP



THE FAZIO



BRAMBLETON

GOLF COURSE

Charming 18-hole golf course in Ashburn, Virginia



BRAMBLETON
GOLF COURSE



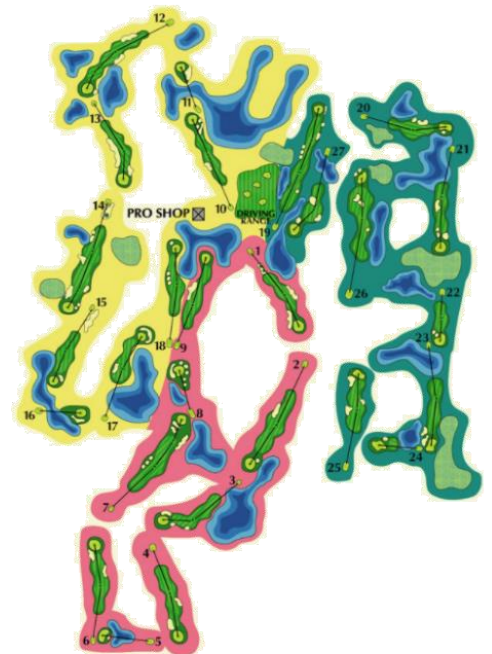
Enjoy the grandeur and beauty of Brambleton Golf Course, located in Ashburn, just off the Dulles Greenway. Brambleton measures almost 6,800 total yards from the back tees, and features several tiered greens, as well as significant water in play on six holes from the front nine, as well as two on the back. Signature holes include number 7 – a par 5 almost 600 yards from the back tees with a narrow landing area off the tee, and number 12, a 145–160-yard par 3, with a beautiful downhill shot to a green surrounded on three sides by water.

Encounter wildlife as you walk the rolling terrain, which features bunkered greens and fairways, large sand traps, and smooth putting greens often sided by water. Designed by **William H. “Hank” Gordon**, Brambleton Golf Course opened in 1994. Gordon is responsible for more than \$10 billion worth of engineering management services. However, only a select few of those projects were golf courses. He also has participated in various aspects of the design for 16 other golf course projects in Virginia and Maryland.





Consistently rated four stars by Golf Digest since 1996, University Park Country Club features 27 holes of championship golf designed by renowned golf course architect **Ron Garl**. Known for his innovative routings and true to his philosophy that a course should "sit softly on the land," Mr. Garl has set a unique standard for environmentally friendly projects that maximize and enhance the land's natural characteristics. At University Park Country Club, a classic design concept was added which makes strategy and shot making a priority. Surrounded by natural woodlands and native habitat, each 18-hole combination offers its own distinct set of challenges suitable for all levels.



CHAMPIONSGATE: INTERNATIONAL GOLF COURSE





Recent renovations to the International Course have yielded improved playing conditions with a complete restoration of 18 greens and all green-side bunker complexes to the original size, look and feel. Greens were restored with Champion Bermuda replacing the original Floradwarf turf.

Green surrounds and par three tees surfaces were replaced with 419 Bermuda replacing the original Paspalum turf. Both changes will allow for firmer, faster playing conditions, more year-round consistency, more tolerant in colder temperatures, able to produce exceptional quality and playing conditions for years to come.

Picking up over 42,000 sq. ft. of greens surface will allow for several new pin positions that will test players of all skill levels. A number of fairway bunkers were also removed for this rejuvenation project to allow for cleaner sight lines off the tee. The International Course still boasts a raw design of a rustic "down under" style of a coastal links course from **Greg Norman's** homeland, but with new turf surfaces that will allow conditions to be firm and fast for longer drives and will provide more challenging putting experiences on larger more undulating greens.

The International Course was recently ranked no. 9 in the top overall ranked courses by *GOLF Advisor*. The 7,363-yard links-style International Course is home to sprawling greens and wind-swept dunes, featuring 18 of the most dramatic and challenging holes in the state.

18 Holes / Par 72

TEE COLOR	YARDAGE	RATING/ SLOPE
 Black	7,363	76.3 / 143
 Blue	6,792	74.1 / 137
 White	6,239	71.5 / 132
 Gold	5,618	68.0 / 117





When Club Link acquired Eagle Trace it added another PGA TOUR-caliber facility to its family of outstanding courses.

Eagle Trace hosted the Honda Classic from 1984 to 1991 and then again in 1996. Members and guests will find six sets of tees to challenge their games. From the championship tees, the course plays to more than 7,000 yards while the most forward tees are just more than 5,100 yards.

The **Arthur Hills** layout has some unique characteristics for a Florida golf course, including an island green, three greens surrounded by wooden bulkheads, and it doesn't have a single palm tree on the property - a rarity in southern Florida. All four par-3s

require precise tee shots as water and bunkers protect each green. The 13th hole is our signature par-4 which demands a well-struck tee shot to find the fairway as out of bounds and water protect both boundaries of the hole. And the par-4 18th is perhaps the best finishing hole in Broward County as it can be stretched out to 470 yards.

Eagle Trace currently plays host to the Champions Tour Q-School Final Stage every other year.

Eagle Trace is located east of the Sawgrass Expressway in western Broward County, just north of Atlantic Boulevard and is easily accessible from Palm Beach and Miami-Dade counties.



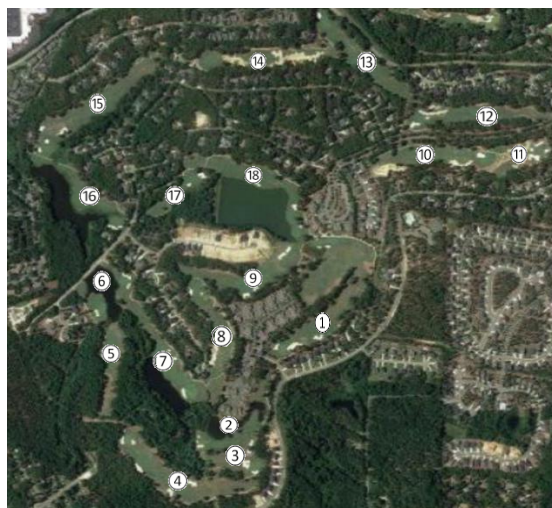


The Mid South Club is a private, gated community conveniently located on famed Midland Road minutes from the Pinehurst Resort, downtown Village Pinehurst and Southern Pines. Set on over 500 acres of the rolling Sandhills, the property features significant elevation changes and is adorned with lakes, wetlands and a plethora of Club amenities.

The King's Course at Mid South is an **Arnold Palmer** Signature Course and has hosted qualifying tournaments for the US Open, US Senior Open, US Amateur and also received numerous local and national awards. For John McDougald (Director of Golf at Talamore/Mid South), there's no doubt in his mind: Mid South Club is the King's masterpiece: "I don't think there's any question, especially for

people who know a little bit about golf – when they get done here, they know they've truly played one of Palmer's treasures."

The course is woven into a residential area, though the housing setbacks give the layout a lot of breathing room and the golf setting feels more isolated than most residential communities.





A PREMIER GOLF DESTINATION IN CHARLOTTE/CONCORD

Designed by **Dan Maples**, nationally known for creating some of the Carolina's top courses, Rocky River Golf Club is the premier public course in the Charlotte metropolitan area and is owned by the City of Concord. Managed by the Embassy Suites-Concord, it is one of the only courses in the state of North Carolina to offer stay and play packages with a fantastic hotel affiliate.

Rocky River is a beautiful golf course that utilizes many of the existing features of the area to provide a great setting for golf. The routing flows through the existing contours of the land and is bordered by the Rocky River and surrounding wetlands. An existing boulder that was too large to move during construction provides a memorable tee shot on hole #3.



Maples was born in Pinehurst, North Carolina in 1947. At the age of six, Dan designed his first golf course and was handling earth moving equipment before he had his driver's license. During summer vacations, Dan worked for his father gaining valuable experience in golf course construction and maintenance.

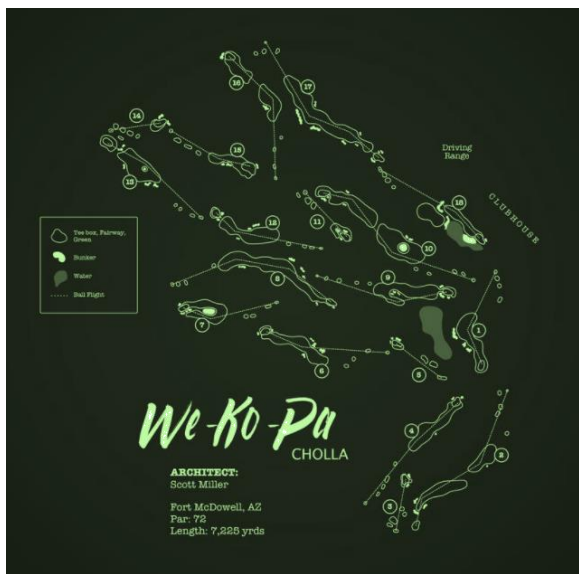
After receiving a Bachelor's Degree in Landscape Architecture from the University of Georgia in 1972, he worked as a club pro for two years. In 1974 Dan joined the firm of his father, Ellis, as a full partner. Together, the team of Ellis and Dan Maples helped create 17 superb courses including Grandfather Mountain in Linville, NC and the Country Club of North Carolina Dogwood Course in Pinehurst.



The Cholla Course at We-Ko-Pa Golf Club offers a dramatic test of golf that plays through shady arroyos, over desert ridges and amid some of the most picturesque Sonoran Desert on the planet. For this reason, Cholla is widely considered as one of the most pristine desert golf experiences in the Southwest with no homes or other development to spoil the sweeping views of the nearby river valleys, Red Mountain, Four Peaks, and the rest of the majestic Superstition Mountains. The aesthetic charm of Cholla appeals to golfers just as much as its strategic challenge.

Open for public play since December 2001 and designed by **Scott Miller**, Cholla has racked up a host of honors on its way to becoming one of Arizona's most celebrated courses. In fact, the 7,225-yard layout was named by Sports Illustrated as one of the "10 best new public courses in the world" shortly after its debut.

We-Ko-Pa's two courses, Cholla and Saguaro, have much in common – both are meticulously maintained, both have received high praise from the golf media and consumers alike and both offer a tranquil golf experience free of houses and roads, thus preserving the unobstructed mountain views of the Sonoran Desert. That is where the similarities end. The Cholla course is recognized as the reference course for the quintessential target style desert golf course. Whereas, the Saguaro course was designed as a more traditional style golf course where greens are close to tees, ideal for walking, and the course follows the natural movement of the land.





Arizona Country Club is the perfect blend of what made the country clubs of the past endure, mixed with a modern-day lifestyle in a true neighborhood setting. Tucked just south of the picturesque Camelback Mountain in the idealistic Arcadia District of Phoenix and just minutes from downtown Scottsdale, everything you had hoped for awaits here. Designed by **Ernest Suggs** and **Willie Wansa**, Arizona Country Club measures 6720 yards from the longest tees and has a slope rating of 130 and a 72 USGA rating.



For over 72 years, the Arizona casual lifestyle has been the essence of our culture. Consistently Ranked the #1 Family Club in the state, members enjoy the comforts and beauty of a new clubhouse and are invigorated with golf, tennis, fitness, swim, spa and a warm hospitality from the staff and fellow members.

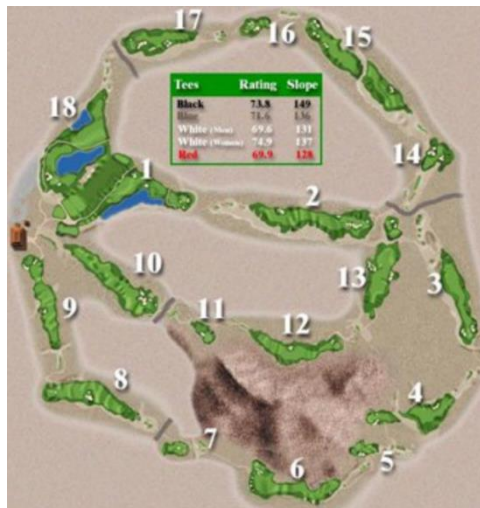
Whether you are drawn by the lure of our lush greens, our prestigious past as host of the Phoenix Open (1955-1973), or simply looking for a place to unwind, Arizona Country Club will exceed your expectations.





As one of the best golf courses in all of Arizona, you will play on a world-class layout that provides, "A golf experience to remember for a lifetime." In 1995, **Robert Trent Jones Jr.** made his Arizona debut joining an elite list of world class architects who have left their mark in the desert southwest with the opening of Las Sendas Golf Club. Play your next round of golf at Las Sendas Golf Club for a world class golf experience and you will see why people come from all across Mesa, Scottsdale, Phoenix, and around North America rate this track as one of the top 10 golf courses in Phoenix & Arizona.

Jones didn't create a course with whimsical decorations like railroad ties, and he didn't build targets. The golf course is for those who strategize, mapping the way from tee to green.



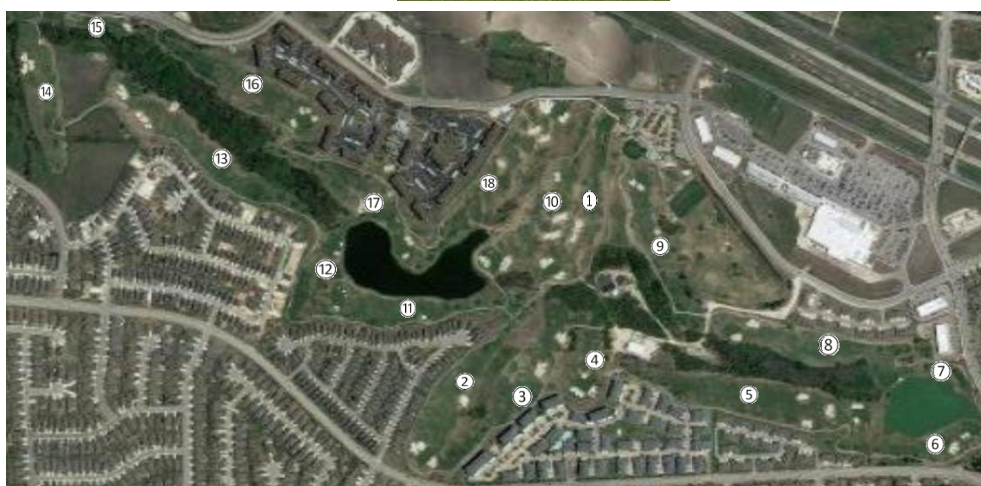


Located in Hutto, TX near Austin, The Golf Club at Star Ranch offers a **Roy Bechtol** designed 18-hole golf course and clubhouse. With undulating fairways and greens flanked by pristine white sand bunkers, The Golf Club at Star Ranch provides an enjoyable experience for both the novice and scratch golfer – especially considering the greens fee.

Each of the nines is a little different from the other. The front nine is a par 35 with only one par 5, a little shorter, and much more forgiving off the tee.

This nine plays like a links style course with gently rolling and wide-open contoured fairways.

As good as the front nine is, the back is a tad better. It's a little longer, tighter and more demanding, and home to some great holes. On this nine you've got to manage the water, some tighter fairways, the bunkers, a creek that crosses the fairway, and a cactus patch that can get nasty if you try to retrieve your ball.





A premier Delaware Valley golf club located in Avondale PA. Hartefeld National features a spectacular 18-hole **Tom Fazio** masterpiece that challenges and entertains golfers of all abilities. The course is nestled among some of the most spectacular scenery in southern Chester County and has played host to several professional events including the Senior PGA tour.





Butler National was former tour player **George Fazio's** idea of a championship course, with 10 forced-carries over water in 18 holes. Even before it opened, it was signed to eventually serve as permanent site of the Western Open. Problem was, when it opened, it was the last cool-weather venue on the PGA Tour to utilize bluegrass rather than bent-grass for its fairway, and several prominent golfers declined to play Butler National because of potential flyer-lies from those fairways. Eventually the turf was converted, but then the Shoal Creek scandal occurred. Rather than change its restricted men-only policy, the club relinquished its role of Western Open host after the 1990 event. Not flashy, but tough, Butler is pure golf from the first tee to the 18th green. It is a true and fair test to the scratch golfer, and an extremely difficult one at that. It does not let up in challenging all the skills-distance, accuracy, finesse and even the mental aspect. It can take a golfer out of their swing comfort zone.

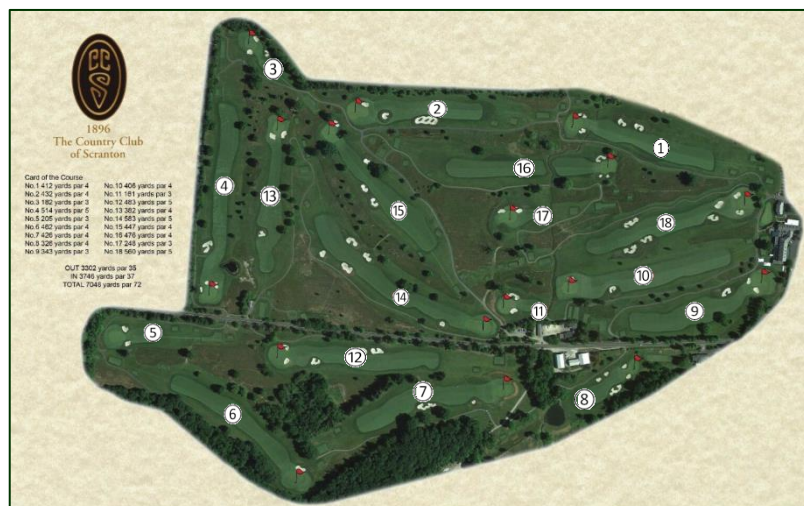




The Country Club of Scranton is host to an original 18-hole golf course designed by the famous Golf Course Architect **Walter Travis** in 1927. The "New Nine," as it was named, was designed by Dr. Michael Hurdzan in 1988 and, like the original course, is best known for its large undulating greens.

The three nines, appropriately named the Pines, Willows and Falls, combine to make three eighteen-hole courses, the Old, North, and South. Each nine offers a wide variety of challenges but each is still forging in its own way, which makes the course attractive to both low- and high-handicaps players alike.

Ranked #92 in Golf Week's "Top 100 Classical Courses in 2013"
 Ranked #90 in Golf Week's "Top 100 Classical Courses in 2016"
 Ranked #81 in Golf Week's "Top 100 Classical Courses in 2017"
 Ranked #86 on "Top 100 Golf Courses of the USA 2018"





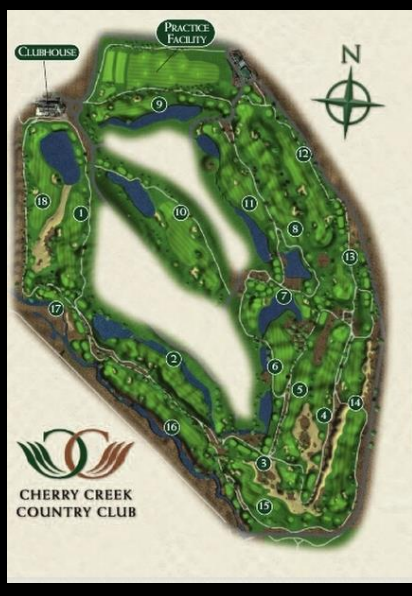
The Club at Pradera's spectacular 7,200-yard championship layout was designed by renowned golf course architect **Jim Engh** to blend harmoniously with its pristine natural surroundings in the shadows of the Rocky Mountains. Mature trees frame gently rolling hills and immaculately maintained greens on this bewitching golf gem, which combines breathtaking aesthetics with unpredictable cleverness. In many cases, the holes pay homage to Ireland's wispy ragged Irish links, with some areas completely untouched. In others, picturesque ponds and rugged wetlands create a more modern look and feel. The result is an astonishing collection of visually stunning, strategically diverse holes that are as imaginative as they are fun to play for golfers of all ages and abilities.





CHERRY CREEK COUNTRY CLUB

When there is a **Nicklaus Signature Course** Design in your backyard, your view on golf gets better no matter how often you play. Cherry Creek Country Club's design offers a great test of golf at any skill level. You will be astonished at the amazing array of movement, water, landscaping, and 5 sets of tees with 3 sets of combination tees ranging from 4,981 to 7,450 yards. The course can be setup to challenge a beginner or even to the world's elite depending on the day. The parkland design includes several risk-reward shots throughout the course and water comes into play on 9 of the 18 holes. Several holes reward accurate driving as "speed slots" can take an ordinary drive and make it extraordinary. This layout makes any day on the course a GREAT day on the course!





Located right on the property of Little Creek Casino Resort, Salish Cliffs Golf Club was sculpted out of the Kamilche Valley by renowned course architect **Gene Bates**. Salish Cliffs sits atop a rolling Pacific Northwest landscape just minutes from the shores of Puget Sound in Shelton, Washington. The par 72 layout offers world-class golf, stunning Pacific Northwest views and plays 7,269 yards from the championship tees.

Featuring elevation changes of nearly 600 feet and surrounded by natural beauty and no homes, the course is challenging yet fun. Holes feature outstanding directional changes with frequent uphill and downhill tests, challenging bunker placement and shapes. Atypical to the area, preferred bent grass stretches tee to green bordered by pure ryegrass in the rough for a distinctive, contrasting look. Hole No. 9 and No. 18 share expansive 15,000 square-foot double green with a sparkling lake and wetland preserve to separate the holes.





tom fazio championship course

This masterful **Tom Fazio**-designed course blends the challenge of championship golf with the inherent aesthetics of the natural terrain.

Rolling fairways and sculpted greens are punctuated by ancient lava rocks, stunning water features and dramatic juniper trees. Our exclusive, one-of-a-kind course is home to one of the most unique holes in the world: a par three, 8th hole that includes a 45-foot canyon and an exposed lava tube. This course is an unforgettable golf experience for players of all levels.

jack nicklaus signature course

Designed by the master golfer, **Jack Nicklaus**, our signature golf course plays firm and fast and accommodates golfers of every skill level...even Jack himself, who stopped by to play his course this summer. This public course provides a minimalist experience with an emphasis on the golf game itself, combining strategy with playability, beautiful transitions and true putting surfaces. Ancient lava rock ridges and outcroppings intertwine with natural landscapes and accent magnificent views of the Cascade Mountains.

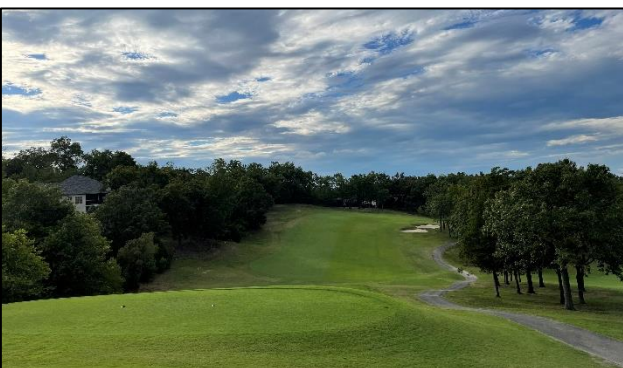
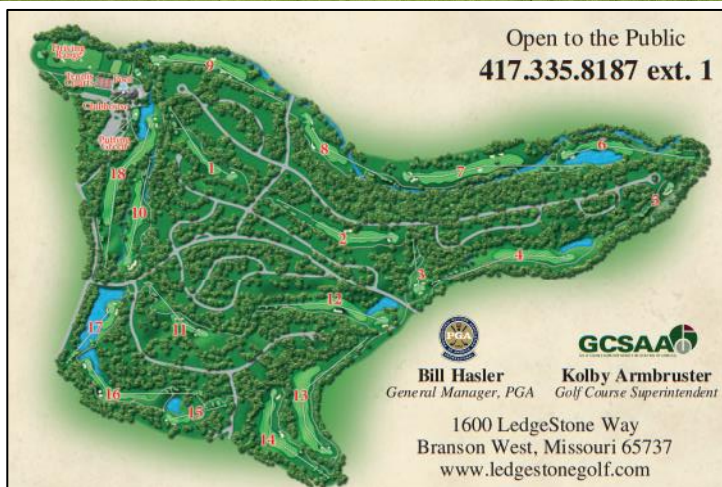




Inspired by the varied topography of the preserve, **Robert Trent Jones** and his chief designer and top aide, **Roger Rulewich**, created a 27-hole masterpiece of tree-lined fairways, well-placed bunkers to maximize accuracy and the subtly contoured greens for which Jones is internationally known. Typical of all Jones' creations, the development of water as a playing hazard is a strategic consideration on seven holes at Metedeconk National. Extensive and multiple tee boxes—another Jones trademark—allow for unlimited flexibility and permit the course to be played at yardages ranging from approximately 5,200 to 7,200. From the championship tees, the course has a rating of 76.4 and a slope index of 152 with a par of 72. Masterfully routed, the three nines of our private course embrace this region of New Jersey's natural wilderness. Almost every hole is an entity unto itself. The proximity of marsh and lowland pine forest throughout provides a delightful dividend to golfers who may be fortunate enough to be joined on their round by the occasional deer, fox, muskrat or circling hawk who continue to make Metedeconk their home.



*This 18-hole, par 71, championship course is tucked away amidst the Ozark Mountains, just minutes from downtown Branson. LedgeStone Country Club offers a challenging and rewarding golf experience that has won the praise of members, guests and visitors alike. A combination of strategy and consideration for natural design, this dramatic **Tom Clark** layout features distinct elevation changes that require accurate shot shaping and distance control.*





Acclaimed as one of the region's top golf courses, Buffalo Ridge has been transformed by the guiding hands of visionary conservationist Johnny Morris and renowned golf course architect **Tom Fazio**. Morris and Fazio have redesigned the course layout to bring players in close contact with nature, native grasses and free-ranging North American bison from nearby Dogwood Canyon Nature Park. The 18-hole championship course showcases the beauty of the Ozarks with natural rock formations, caves, creeks, lakes and waterfalls throughout the routing of one of Missouri's best golf courses.



Paying tribute to Ozarks-native and World Golf Hall of Fame member, Payne Stewart, Payne's Valley is first public-access golf course designed by 82-time PGA TOUR winner **Tiger Woods** and Woods-led golf course design firm, TGR Design. Payne's Valley stands out with its inviting layout, pristine water features, large fairways and greens, and spectacular 19th hole... the Big Rock at Payne's Valley.

Through the creation of Payne's Valley Golf Course, Tiger Woods and Big Cedar Lodge offers a course where players of all skill levels will be able to enjoy the game with each other in the beautiful Ozark Mountain landscape.

"It's mind-boggling how far we've come and how special this place is..."

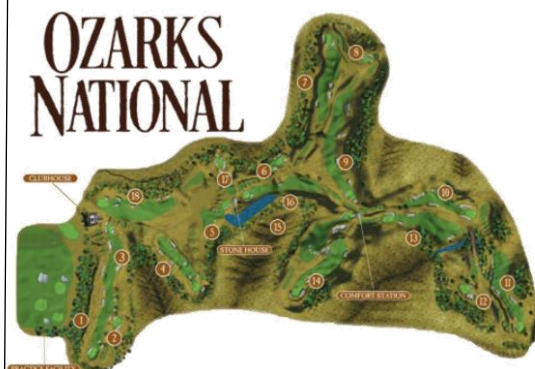
- TIGER WOODS



Adding to an amazing list of world-class golf courses, Big Cedar Lodge is proud to introduce Ozarks National, Missouri's first and only golf course designed by architect duo **Bill Coore** and **Ben Crenshaw**. Measuring 7,036 yards from the back tees, the course represents the terrain of the Ozarks with beautiful views.

The layout features challenging carries and a variety of visually appealing approach shots that are highlighted by the native habitat. The course also includes interesting features, such as a 400-foot wooden beam and plank bridge, which connects the tee box and fairway of the 13th hole that stands 60-feet above a flowing creek.

Though not as broad as is customary for the designers, the cant of the holes and the engaging fairway bunkering put a premium on shaping shots and hitting the correct line off the tee.

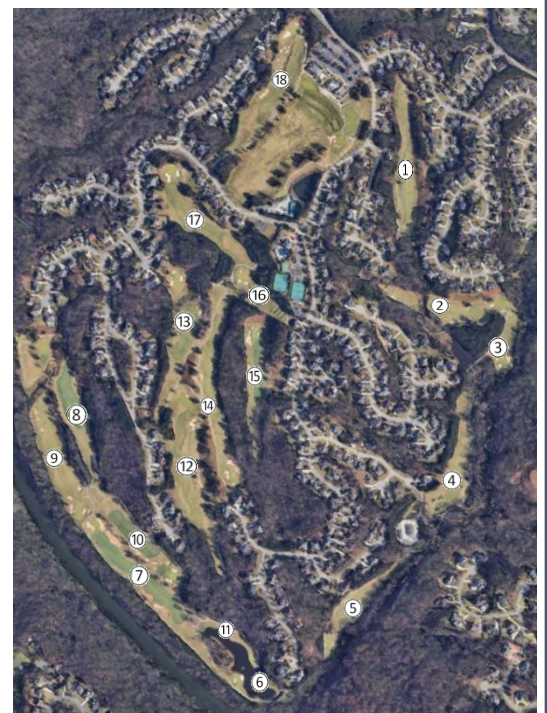






Bear's Best Atlanta is ranked in the "Top ten courses you can play in America" by Golf Magazine. Located in the upscale gated community of Edinburgh, Bear's Best is a high-end daily fee course focused on corporate entertaining, golf outings and providing the experience of a luxurious private club at a public facility. **Jack Nicklaus** selected 18 holes from his more than 300 course designs worldwide and put them into one extraordinary round of golf at Bear's Best Atlanta. Among the courses featured are Castle Pines, Muirfield Village, PGA National Championship Course, Sherwood Country Club, Shoal Creek and Gleneagles.

Elevation gives this upscale public course its architectural and strategic energy. You'll be hitting uphill and downhill pretty much all day, and rarely off an even lie. The course is so good as a whole that the holes' origins become secondary. Not surprisingly, there isn't a weak one in the bunch. Bear's Best requires a variety of shots and will keep you engaged throughout the round.





Colorado



TPC Colorado is the state's first ground-up golf course development in nearly 10 years and the only TPC in Colorado.

Designed by **Arthur Schaupeter**, the course can be stretched out to over 7,991 yards long to provide a challenging round of golf to the TOUR players, while multiple large tees on each hole will give recreational golfers an opportunity to play the course at any length, they find enjoyable, ranging from 4,157 yards up.

Featuring sweeping majestic views of the Rocky Mountains and nestled alongside the sparkling blue waters of Lonetree, McNeil and Welch Reservoirs, the 865-acre golf community will encompass a master-planned residential neighborhood, an 18-hole championship golf course and clubhouse, a community center, pool, fitness facility and a dynamic lakefront gathering locale.

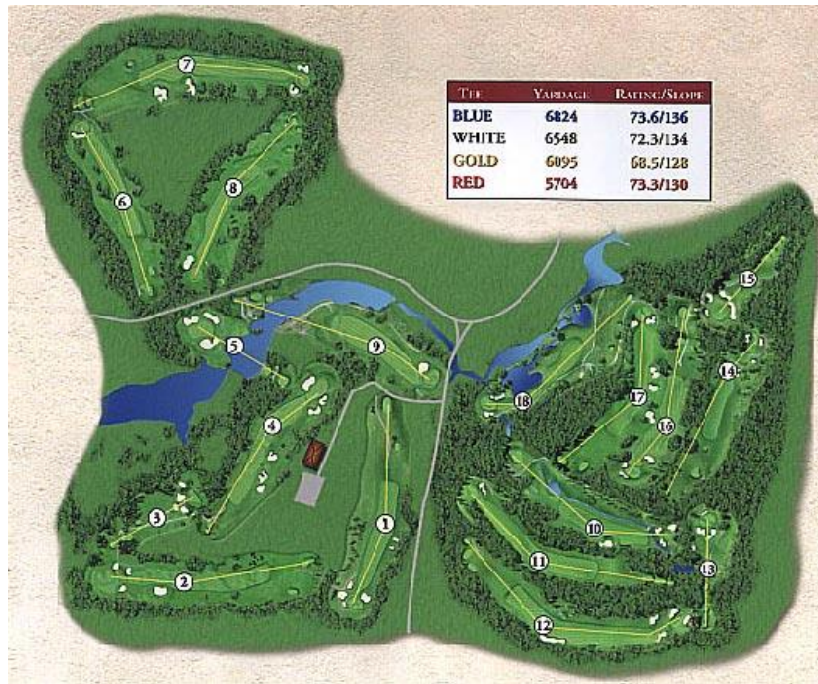
TPC Colorado is the proud host of the Korn Ferry Tour's TPC Colorado Championship at Heron Lakes.





Moselem Springs Golf Club in Fleetwood, PA has been recognized as one of America's greatest golf courses. Set in the lush, rolling hills of Berks County, it is truly a spectacular "golfing enclave of great natural beauty and a course of unusual charm and excellence", to quote its founder, Hawley Quier.

For 50 years, this pristine course has lured the finest golfers in the State and beyond, as well as being a venue for teaching and nurturing those new to the game. It is a golf-only club.



Moselem is a 6808-yard, par-70 course from the championship tees. The six different sets of tees offer a playable and enjoyable course to all levels of golfers, including juniors and beginners. The course is widely considered as one of the most challenging, scenic, and historical courses in Pennsylvania.

Designed and constructed by "acclaimed golf course architect" **George Fazio**. Moselem has hosted several prestigious tournaments such as the 1968 U.S. Women's Open, and the 1996 & 2011 Pennsylvania Opens.





Founded in 1999 by Jack and Barbara Nicklaus, The Bear's Club was conceived to offer members and their guests a world-class golf and club experience.

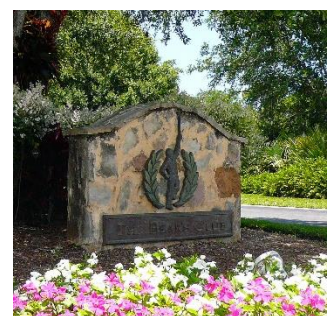
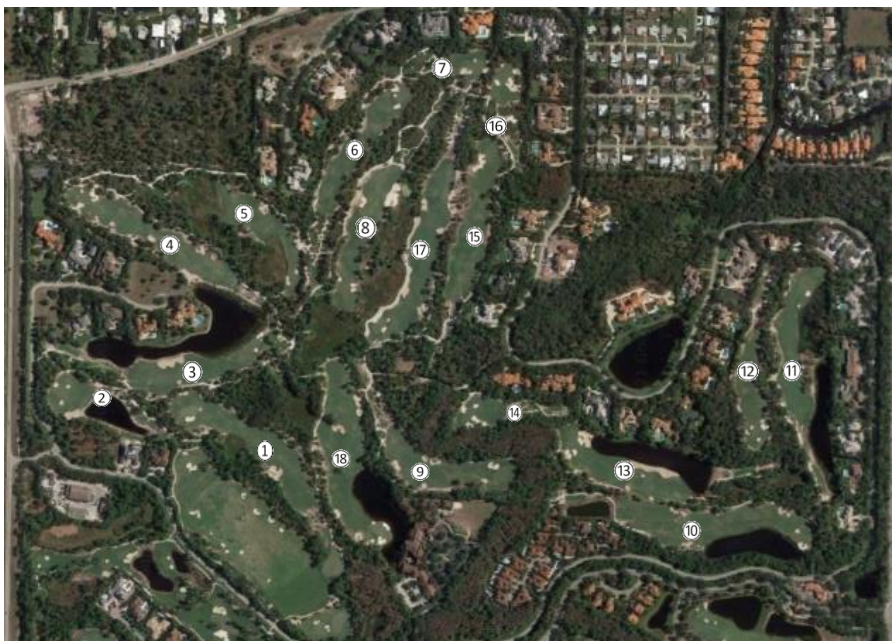
Jack Nicklaus had long harbored a desire to bring a first-rate golf club to his adopted home of South Florida, a destination as fine and reflective of his commitment to excellence as Muirfield Village Golf Club, his masterpiece near his Columbus, Ohio hometown.

He made the dream a reality in 1999 with the creation of The Bear's Club and he spared no expense in mind or motion to create another seminal golf experience.

At The Bear's Club, a golf community nestled among 369 immaculate sylvan, sandy acres a mile from the Atlantic, Nicklaus expertly transformed the native environment with his exacting standards of design. The result is an 18-hole championship course...a gently rolling 7,164-yard layout that exudes a Lowcountry feel as it moves through a property rich in native vegetation, old oaks, pines, cypress trees and wetlands areas.

Aesthetically and strategically placed throughout are 102 bunkers, many of them steeply flashed. They were inspired by the bunkers at Royal Melbourne Golf Club in Australia, which Jack visited in 1998 when he was captain of the United States Presidents Cup team. A collection of medium-to-large undulating greens demand precision; they are rounded off at the edges and feed into hollows and chipping areas.

The club possesses a memorable collection of par-5 holes, anchored by the gorgeous home hole, which features an inspiring green-site. The long pear-shaped green is tucked into the elbow of a lake, leaving a generous bailout area to the right. Just beyond the water that guards the green sits the impressive stone facade of the grand Tuscan-style clubhouse.

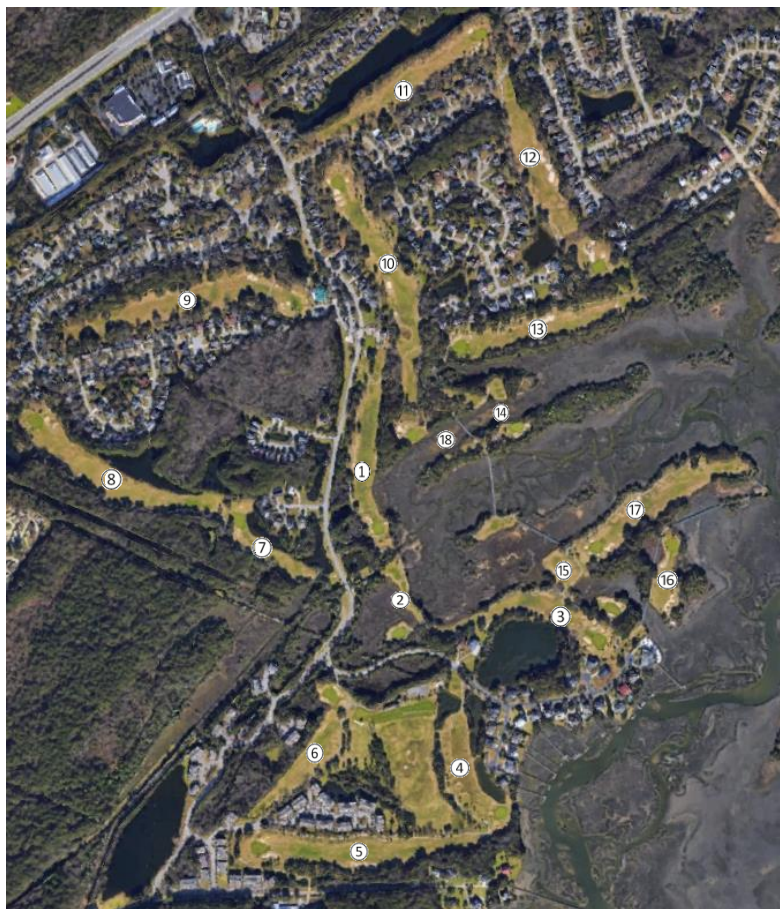


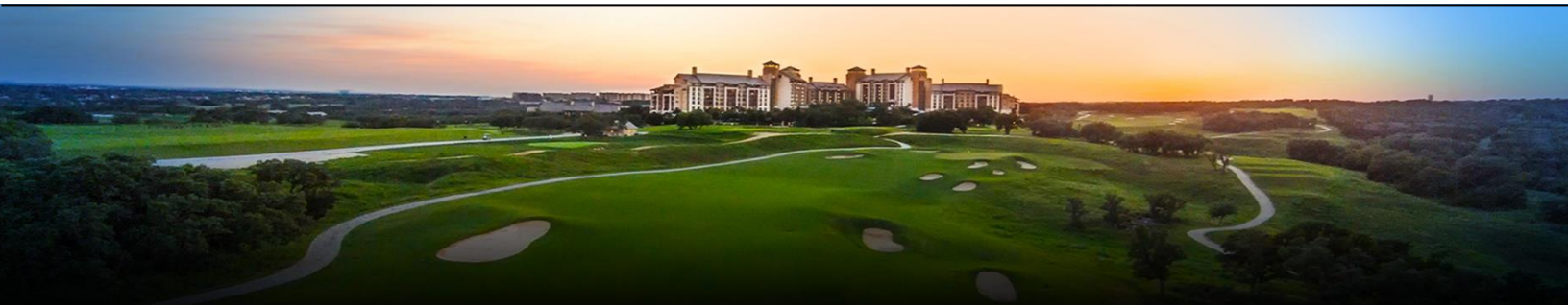


Charleston's Hidden Gem

Charleston National Golf Club is a uniquely beautiful **Rees Jones** design just north of the city of Charleston in suburban Mt. Pleasant. The course is carved along the intracoastal waterway, through natural wetlands and lagoons and through a pine and oak tree forest. The result is a championship caliber golf course with some of the best views on the southeastern coast.

Charleston National was originally designed to be an exclusive private country club in the manner of Augusta National. Designer Rees Jones was brought in to build the finest golf course on the coast. Today Charleston National is a reasonably priced semi-private golf course which has been rated the #1 non-resort golf course in the Charleston area by Golf Magazine. Unabashedly beautiful, Charleston National is a golf facility of high standards and impeccable taste. This 18-hole championship golf course is the only Rees Jones design in the Charleston area open to the public. Complement our course with a friendly and knowledgeable staff, superb playing conditions year-round, and it is not surprising that Rees Jones calls Charleston National "one of the elite venues in golf."





TPC San Antonio features 36 holes designed by two of the world's most talented and respected golf course architects: **Pete Dye**, considered by many the most influential golf course architect of the past five decades; and World Golf Hall of Fame member Greg Norman.

Both The Canyons and Oaks courses were ranked among the top 15 "Best Courses You Can Play" in Texas by Golfweek in 2012.

Working with PGA TOUR player consultant Bruce Lietzke, Dye crafted the par-72, 7,106-yard Canyons course, the previous host of PGA TOUR Champions San Antonio Championship. Dye's

signature wide fairways, stately stands of oak and cedar trees, and panoramic views of the adjacent Cibolo Canyons create a breathtakingly beautiful and enjoyable challenge for scratch golfers and novices alike.

While very different from the traditional, tree-lined Oaks course, the Canyons course stands on its own venue in terms of design, strategy, and hill country beauty. The course sits on a great piece of land that dictates the course strategy and design; the design is true to the flow of the land and provides panoramic views of the 700-acre Bracken-Hill Country Nature Preserve.





Canyon Springs Golf Club in San Antonio

Named by Golf Digest and Golf Magazine as "America's Best New Public Golf Course" when it debuted in 1998, Canyon Springs Golf Club's stunning championship golf course was designed by golf course architect **Thomas Walker** to blend seamlessly with its pristine natural surroundings amidst the rolling hills of San Antonio's Texas Hill Country, on fertile land that previously served as a ranch owned by the Classen family.

Thick stands of mature trees frame gently rolling hills and demanding, immaculately maintained greens, with two breath-taking limestone waterfalls, an abundance of flora and fauna, and picturesque water features adding to the strategic diversity of the course as well as its stunning natural beauty. While challenging for scratch golfers, four sets of tees on each hole enable golfers of all ages and abilities an opportunity to enjoy this spectacular Texas Hill Country golf gem.

